

**SAMSUNG**

GSM TELEPHONE

GT-E2210L

SERVICE *Manual*

GSM TELEPHONE



CONTENTS

1. Safety Precautions
2. Specification
3. Product Function
4. Array course control
5. Exploded View and Parts List
6. Main Electrical Parts List
7. Block Diagrams
8. PCB Diagrams
9. Flow Chart of Troubleshooting
10. Reference data
11. Disassembly and Assembly instructions

**SAMSUNG
ELECTRONICS**



GSPN (Global Service Partner Network)

Country	Web Site
North America	service.samsungportal.com
Latin America	latin.samsungportal.com
CIS	cis.samsungportal.com
Europe	europe.samsungportal.com
China	china.samsungportal.com
Asia	asia.samsungportal.com
Mideast & Africa	mea.samsungportal.com

6. MAIN Electrical Parts List

Design LOC	SEC CODE	Discription
D201,D202	0401-001110	DIODE
U315	0403-001547	DIODE-ZENER
ZD101	0406-001267	DIODE-TVS
D403,D404	0406-001286	DIODE-TVS
D401,D402,D405	0406-001319	DIODE-TVS
Q201	0505-001518	FET-SILICON
LED301,LED302,LED303	0601-002591	LED
LED304,LED305,LED306	0601-002591	LED
LED307,LED308	0601-002591	LED
U312	0801-002237	IC
U401	1001-001546	IC
Q301	1003-001440	IC
HALL201	1009-001035	IC
UME201	1108-000228	MEMORY
PAM101	1201-002706	IC
U203	1203-005498	IC
U310	1203-005512	IC
U101	1203-005521	IC
FM101	1204-002979	IC
BT101	1205-003322	IC
UCP201	1205-003662	IC
TH201	1404-001221	THERMISTOR
R312,R415	2007-000138	R-CHIP
R403	2007-000139	R-CHIP
R401,R402,R404,R407	2007-000141	R-CHIP
R207,R208	2007-000143	R-CHIP
R224,R225	2007-000147	R-CHIP
R201,R223,R301	2007-000148	R-CHIP
R205	2007-000152	R-CHIP
R202,R214,R217	2007-000162	R-CHIP
R311,R314	2007-000164	R-CHIP
R213,R405,R406,R408	2007-000172	R-CHIP
R409,R410	2007-000172	R-CHIP
R103,R104	2007-001288	R-CHIP
R305,R306,R307,R308	2007-001298	R-CHIP
R309,R310,R318,R319	2007-001298	R-CHIP
R212	2007-001301	R-CHIP
R121,R122,R123,R124	2007-001313	R-CHIP
R203,R215	2007-001333	R-CHIP
R313	2007-003025	R-CHIP
R210	2007-007698	R-CHIP
R101	2007-008419	R-CHIP

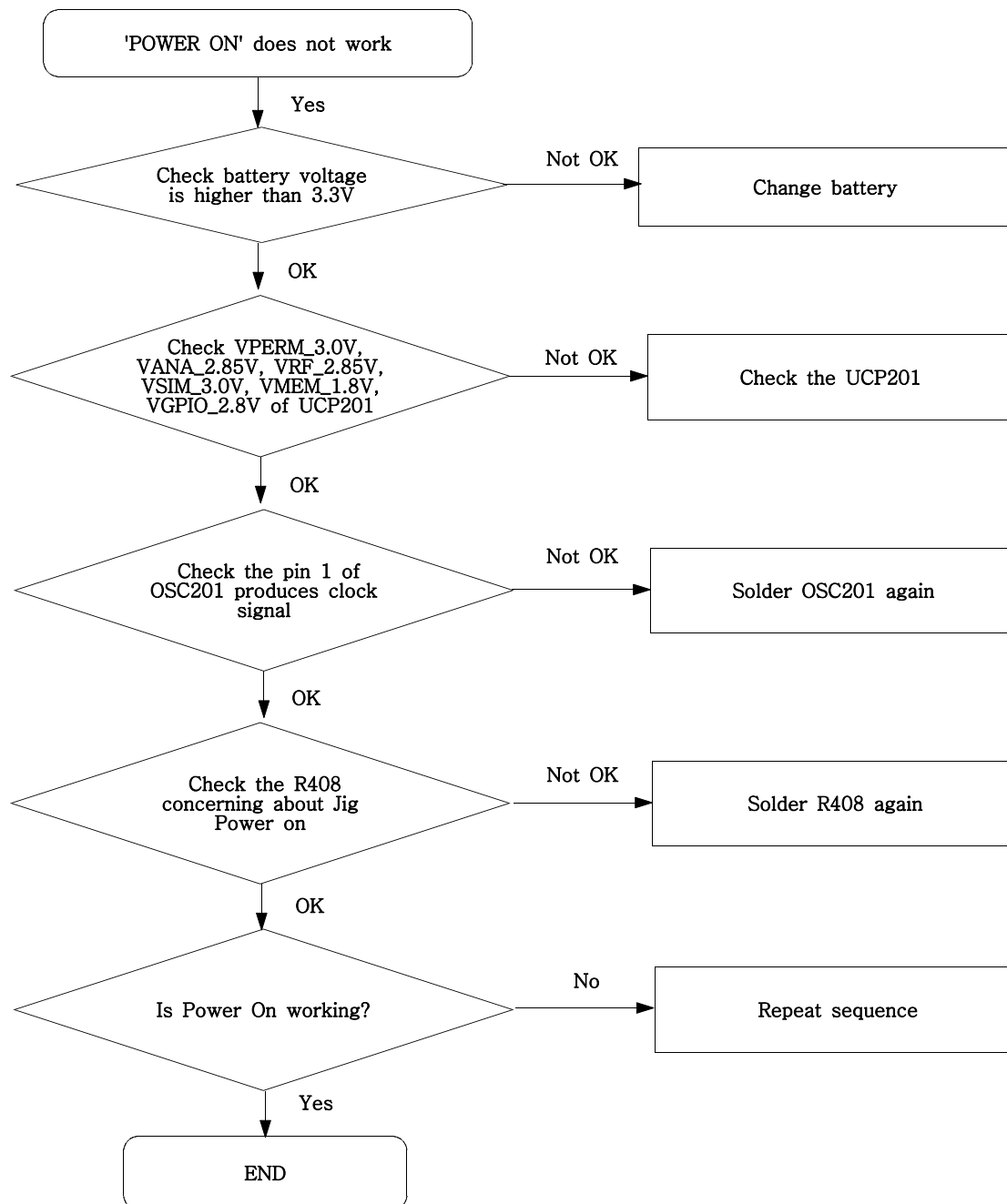
Design LOC	SEC CODE	Discription
R206	2007-008500	R-CHIP
R125,R126	2007-008548	R-CHIP
C107,C115,C157,C158	2203-000233	C-CERAMIC,CHIP
C159,C160,C218	2203-000233	C-CERAMIC,CHIP
C217	2203-000254	C-CERAMIC,CHIP
C229	2203-000311	C-CERAMIC,CHIP
C306,C330,C331,C332	2203-000386	C-CERAMIC,CHIP
C402,C403,C404,C408	2203-000386	C-CERAMIC,CHIP
C409,C410,C414,C415	2203-000386	C-CERAMIC,CHIP
C416	2203-000386	C-CERAMIC,CHIP
C162,C418,C419,C420	2203-000425	C-CERAMIC,CHIP
C110,C203,C235	2203-000438	C-CERAMIC,CHIP
C417	2203-000585	C-CERAMIC,CHIP
C401,C407,C413	2203-000679	C-CERAMIC,CHIP
C128,C129	2203-000696	C-CERAMIC,CHIP
C116,C228,C231,C319	2203-000812	C-CERAMIC,CHIP
C105	2203-000995	C-CERAMIC,CHIP
C219,C220,C221,C222	2203-001153	C-CERAMIC,CHIP
C237,C238,C239	2203-001153	C-CERAMIC,CHIP
C113	2203-002443	C-CERAMIC,CHIP
C154,L106	2203-002677	C-CERAMIC,CHIP
C201,C204,C205,C303	2203-002709	C-CERAMIC,CHIP
C304,C329,C405,C406	2203-002709	C-CERAMIC,CHIP
C411,C412	2203-002709	C-CERAMIC,CHIP
C161	2203-005057	C-CERAMIC,CHIP
C114	2203-005234	C-CERAMIC,CHIP
C122,C224	2203-005344	C-CERAMIC,CHIP
C118,C123,C130,C131	2203-005446	C-CERAMIC,CHIP
C103,C109,C343,C344	2203-005682	C-CERAMIC,CHIP
C345,C346,C347,C348	2203-005682	C-CERAMIC,CHIP
C349,C350,C351,C352	2203-005682	C-CERAMIC,CHIP
C353,C354,C355,C356	2203-005682	C-CERAMIC,CHIP
C357,C358,C359,C360	2203-005682	C-CERAMIC,CHIP
C361,C362	2203-005682	C-CERAMIC,CHIP
C340	2203-005731	C-CERAMIC,CHIP
C232	2203-006048	C-CERAMIC,CHIP
C209,C210,C241	2203-006208	C-CERAMIC,CHIP
C314	2203-006257	C-CERAMIC,CHIP
C111,C112,C119,C124	2203-006260	C-CERAMIC,CHIP
C125,C126,C127	2203-006260	C-CERAMIC,CHIP
C225,C421	2203-006348	C-CERAMIC,CHIP
C300	2203-006423	C-CERAMIC,CHIP

Design LOC	SEC CODE	Discription
C101,C102,C202,C208	2203-006562	C-CERAMIC,CHIP
C211,C212,C213,C214	2203-006562	C-CERAMIC,CHIP
C305,C315,C316,C422	2203-006562	C-CERAMIC,CHIP
C215,C216,C230	2203-006824	C-CERAMIC,CHIP
C104,C108	2203-006839	C-CERAMIC,CHIP
C106,C206,C207,C223	2203-006841	C-CERAMIC,CHIP
C307,C308,C320,C327	2203-006841	C-CERAMIC,CHIP
C328	2203-006841	C-CERAMIC,CHIP
TA201,TA402	2404-001381	C-TA,CHIP
TA401	2404-001465	C-TA,CHIP
TA101	2404-001496	C-TA,CHIP
L102	2703-001938	INDUCTOR-SMD
L122	2703-002198	INDUCTOR-SMD
L107	2703-002200	INDUCTOR-SMD
L120	2703-002203	INDUCTOR-SMD
C120,L116,L121	2703-002207	INDUCTOR-SMD
L108,L109	2703-002281	INDUCTOR-SMD
L405,L407,L408	2703-002313	INDUCTOR-SMD
L105	2703-003196	INDUCTOR-SMD
L203	2703-003258	INDUCTOR-SMD
OSC201	2801-003856	CRYSTAL-SMD
OSC202	2801-004805	CRYSTAL-SMD
F101	2903-001394	FILTER
F103	2904-001868	SAWFILTER
F102	2904-001884	SAWFILTER
L201,L206	3301-001158	CORE-FERRITE BEAD
L411,L412	3301-001438	CORE-FERRITE BEAD
L205,L207,L301,L302	3301-001534	CORE-FERRITE BEAD
L208,L401,L402,L403	3301-001756	CORE-FERRITE BEAD
L404,L406,L409,L410	3301-001756	CORE-FERRITE BEAD
L204	3301-001812	CORE-FERRITE BEAD
L103	3301-001970	CORE-FERRITE BEAD
RFS101	3705-001503	CONNECTOR-COAXIAL
SIM201	3709-001384	CONNECTOR-CARD EDGE
IFC401	3710-002683	CONNECTOR-SOCKET
HDC301	3711-005618	CONNECTOR-HEADER
BTC201	3711-006228	CONNECTOR-HEADER
ANT103	4202-001463	ANTENNA-CHIP
BK301	GH13-00067A	IC

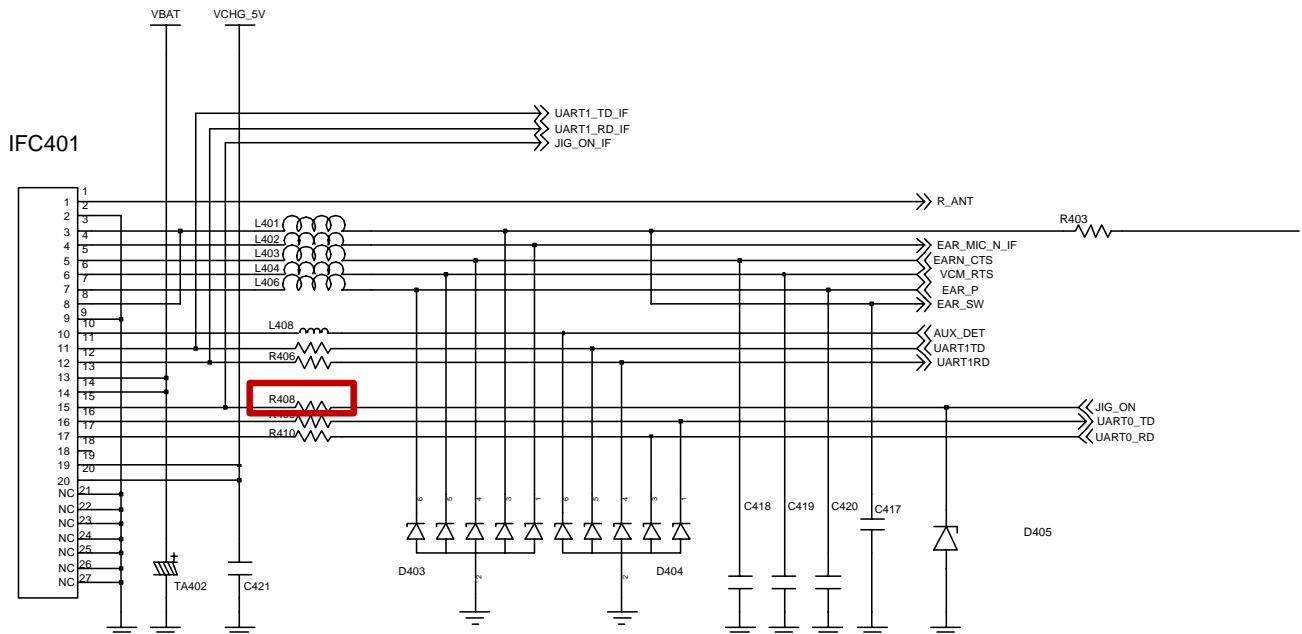
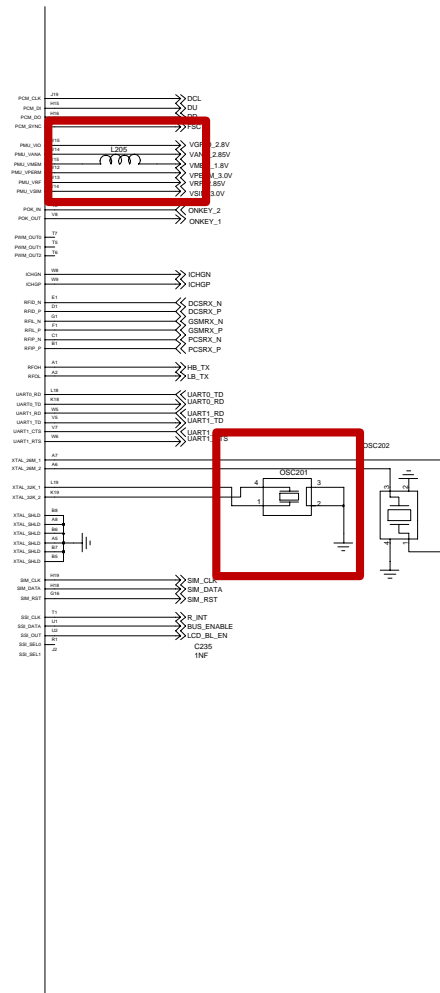
Please consult the GSPN website (Samsung Portal) for the most recent version of the product's part list.

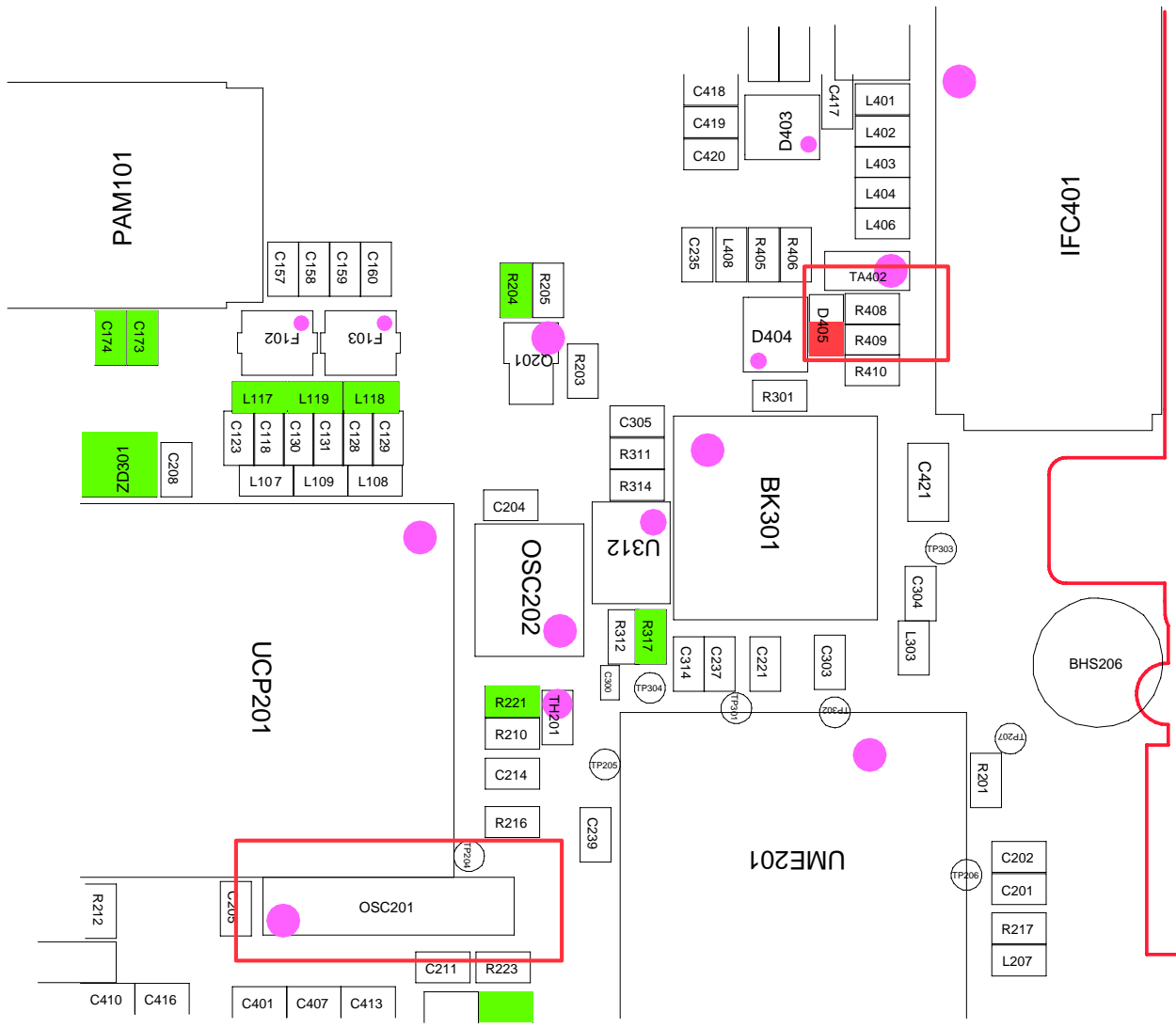
9. Flow Chart of Troubleshooting

9-1. Power On

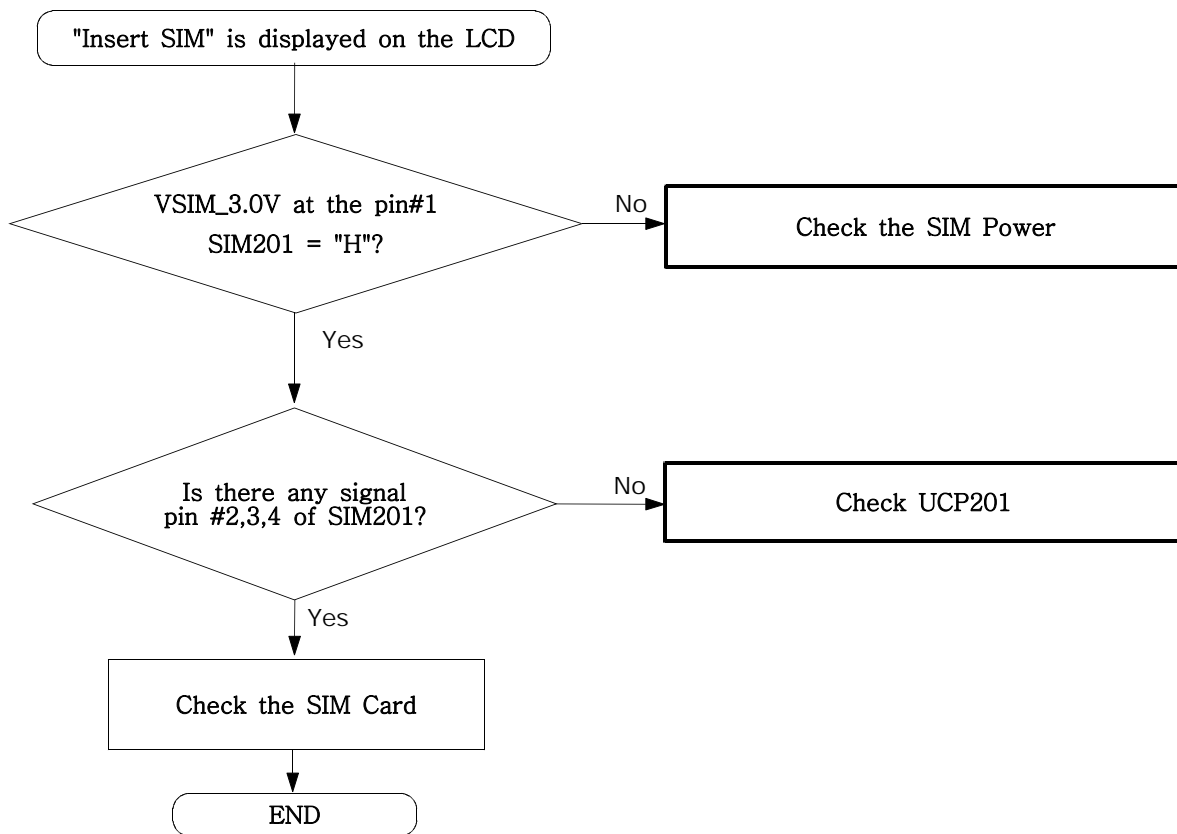


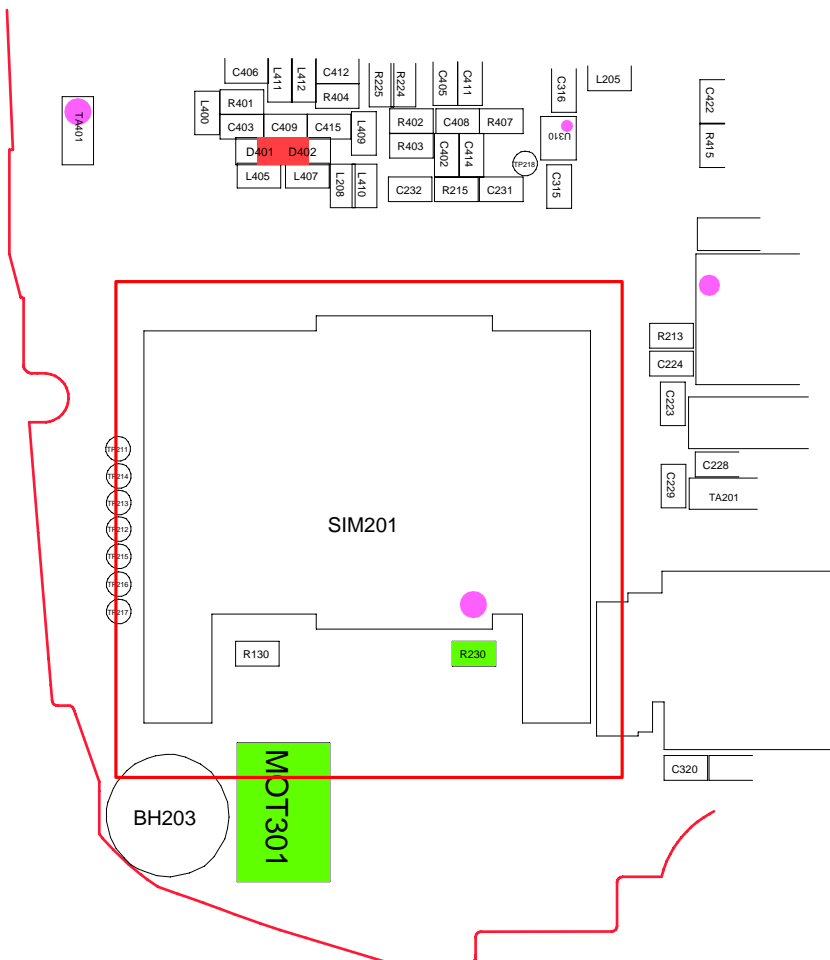
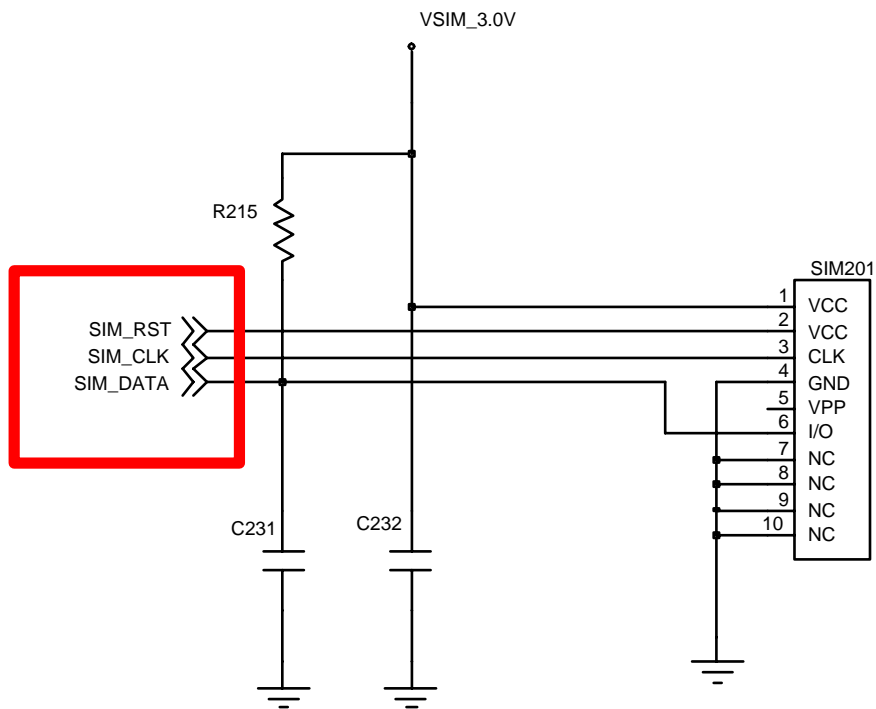
UCP201 PNX4902ET



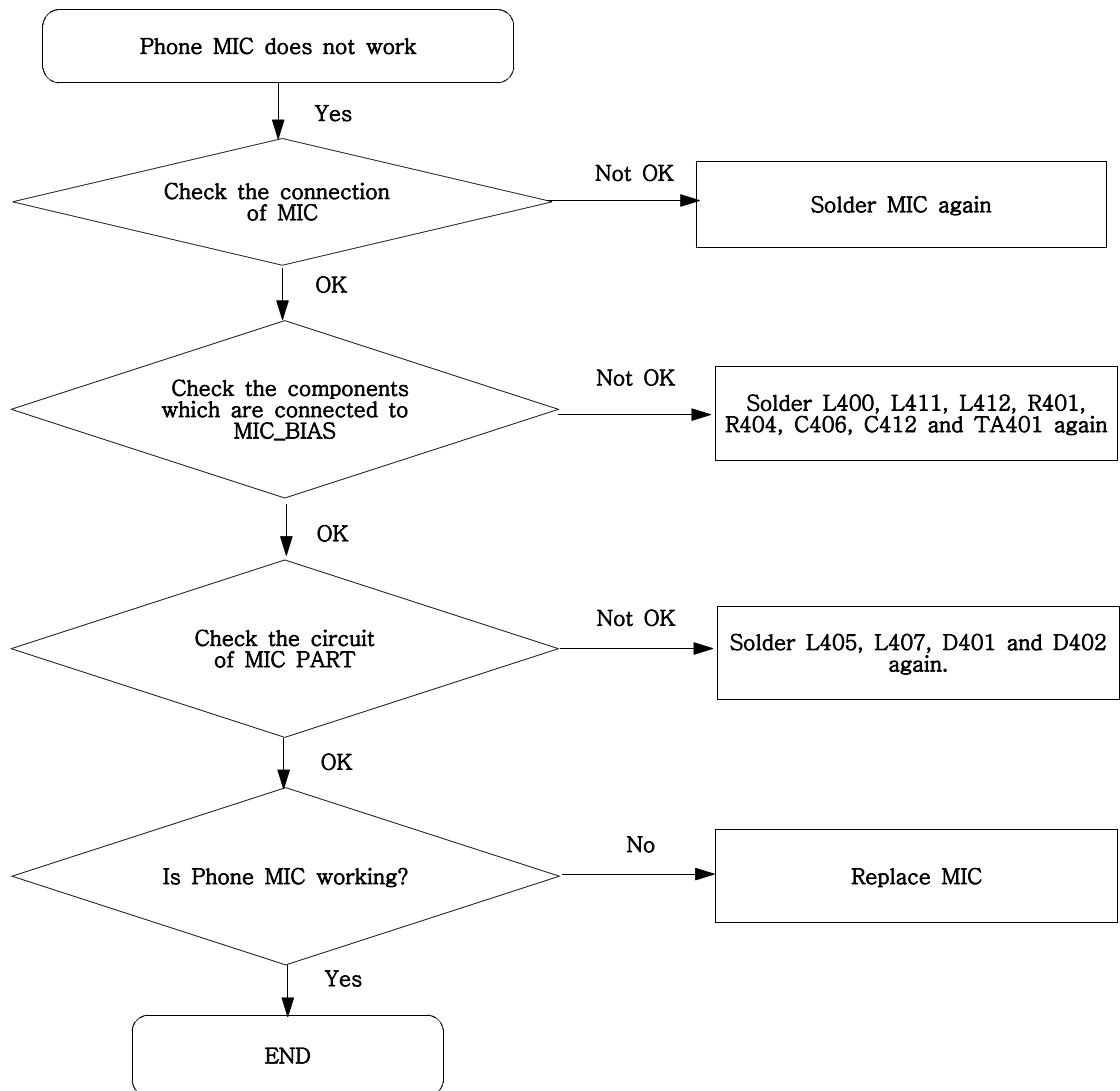


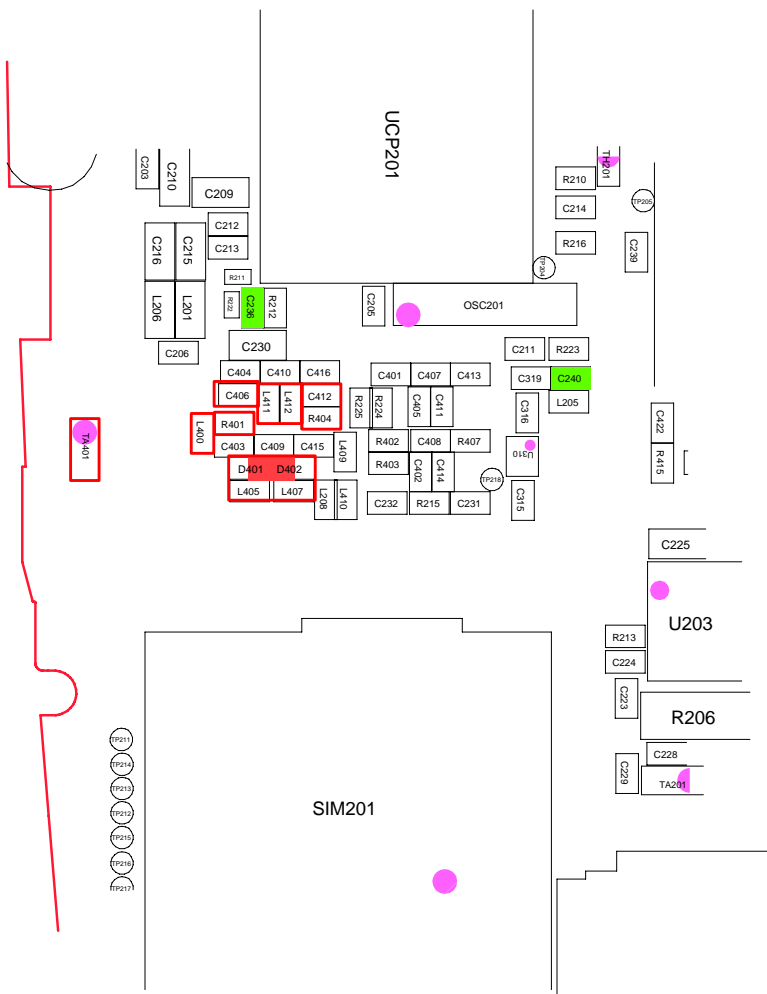
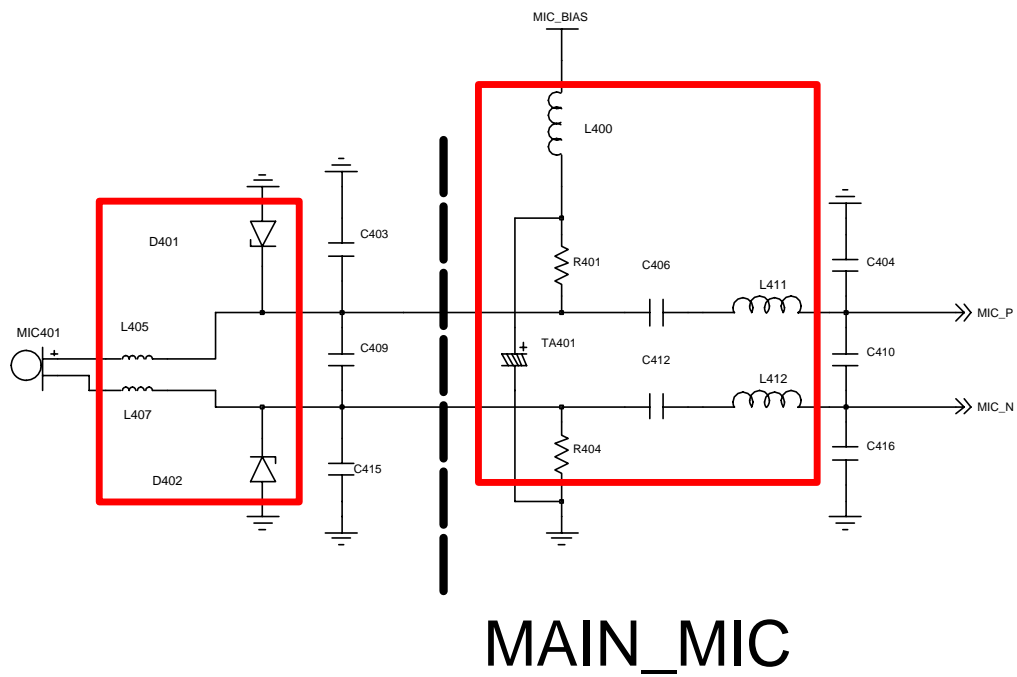
9-2. SIM Part



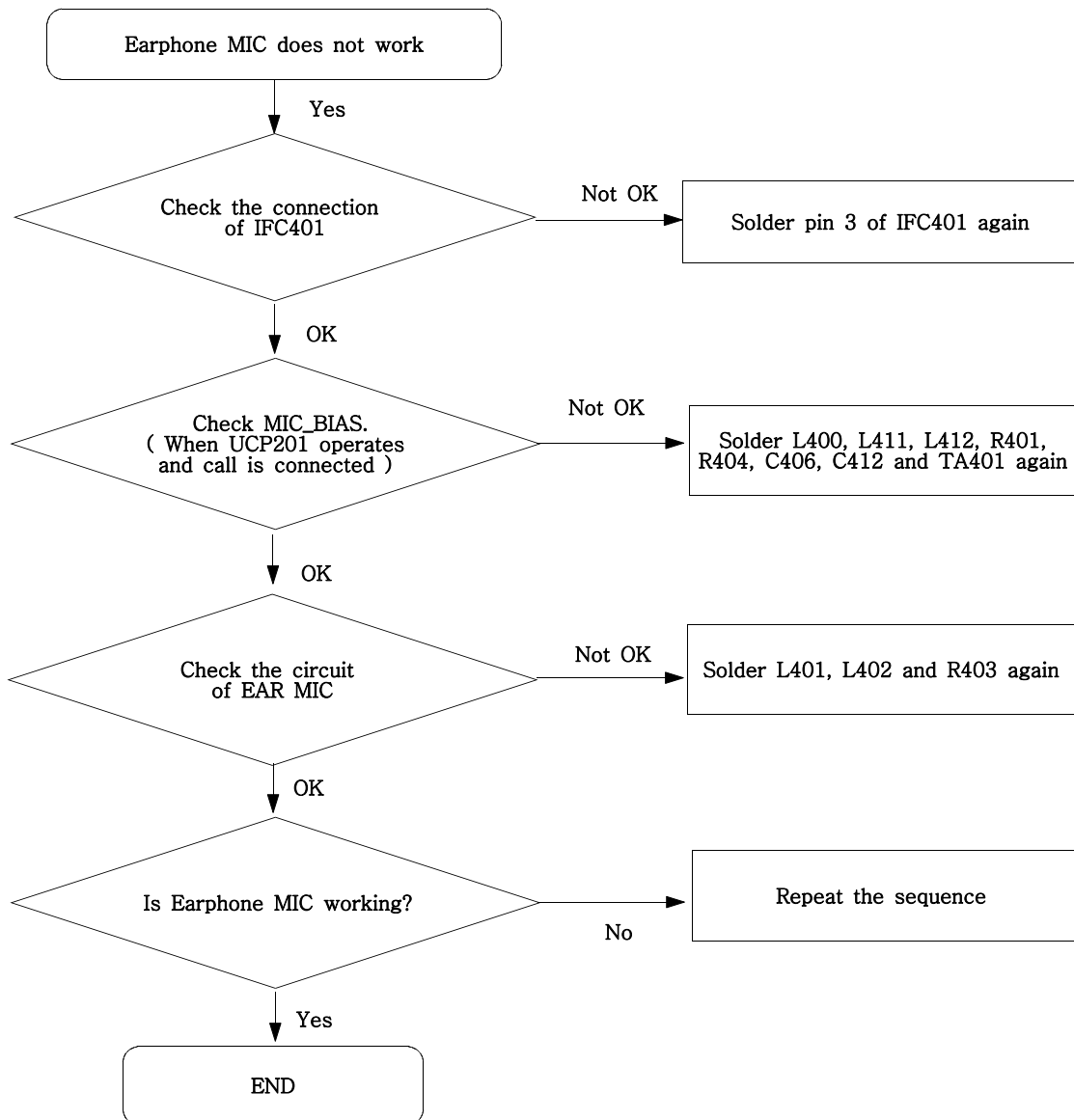


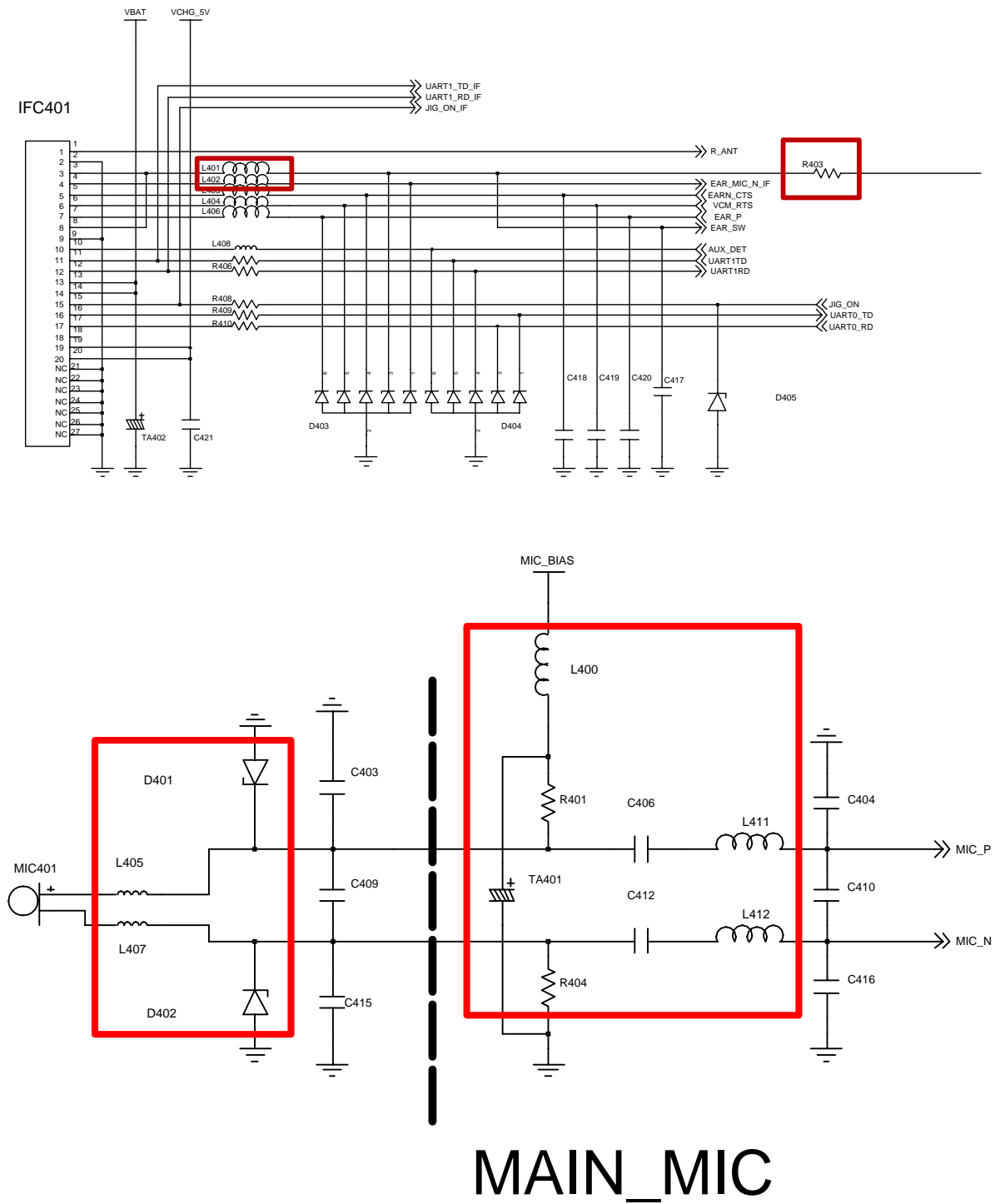
9-3. Microphone Part - Phone MIC

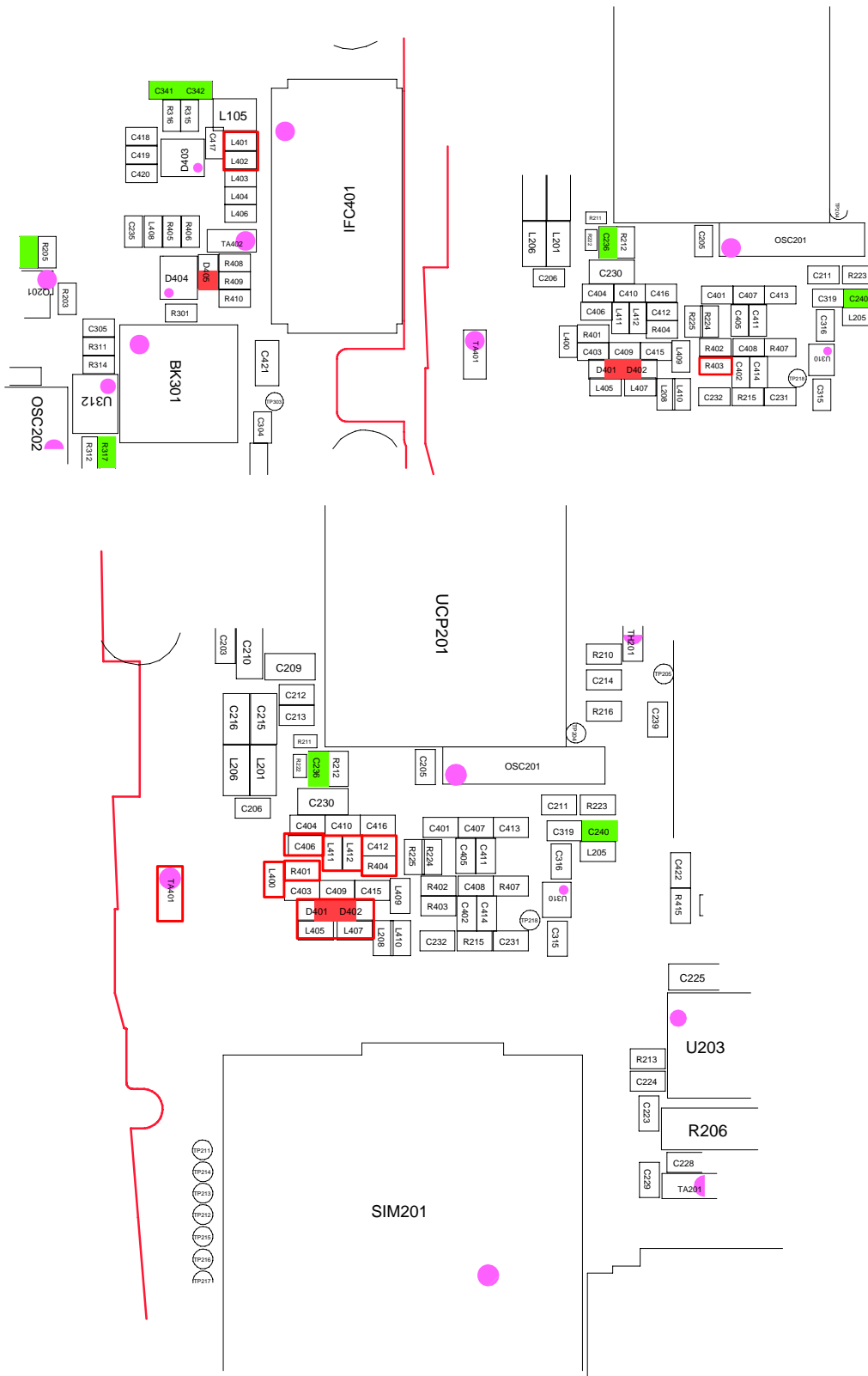




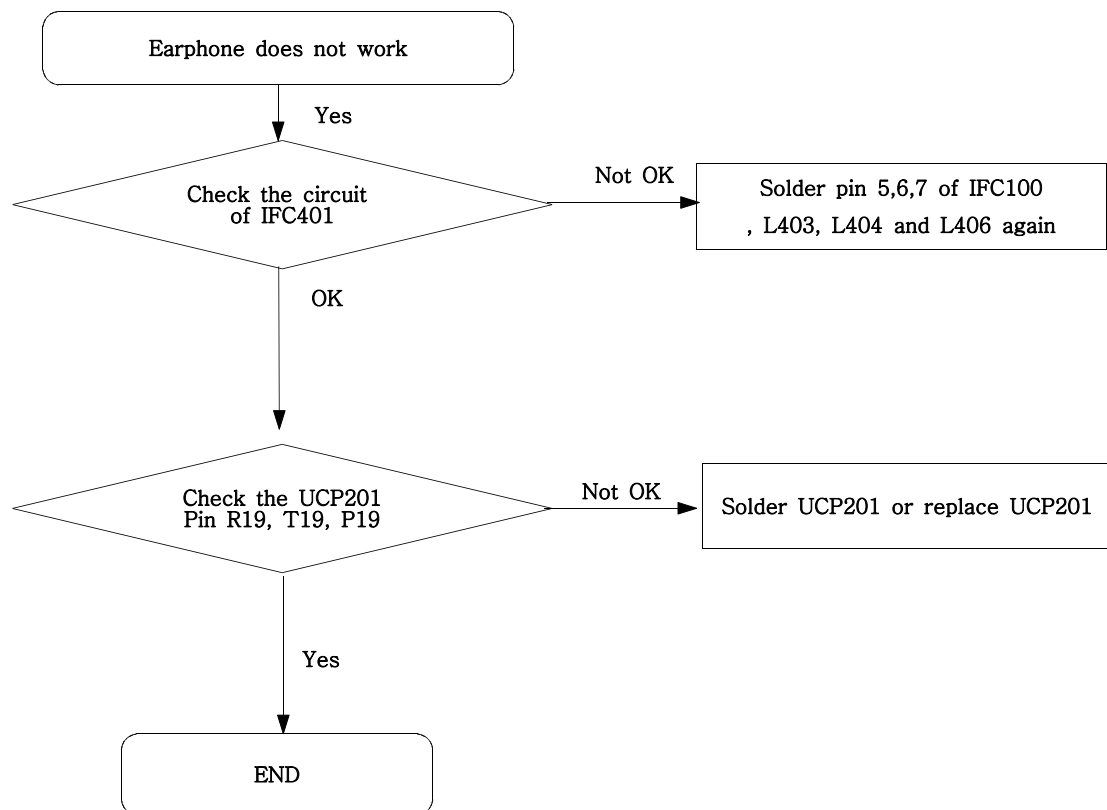
9-4. Microphone Part - Earphone MIC

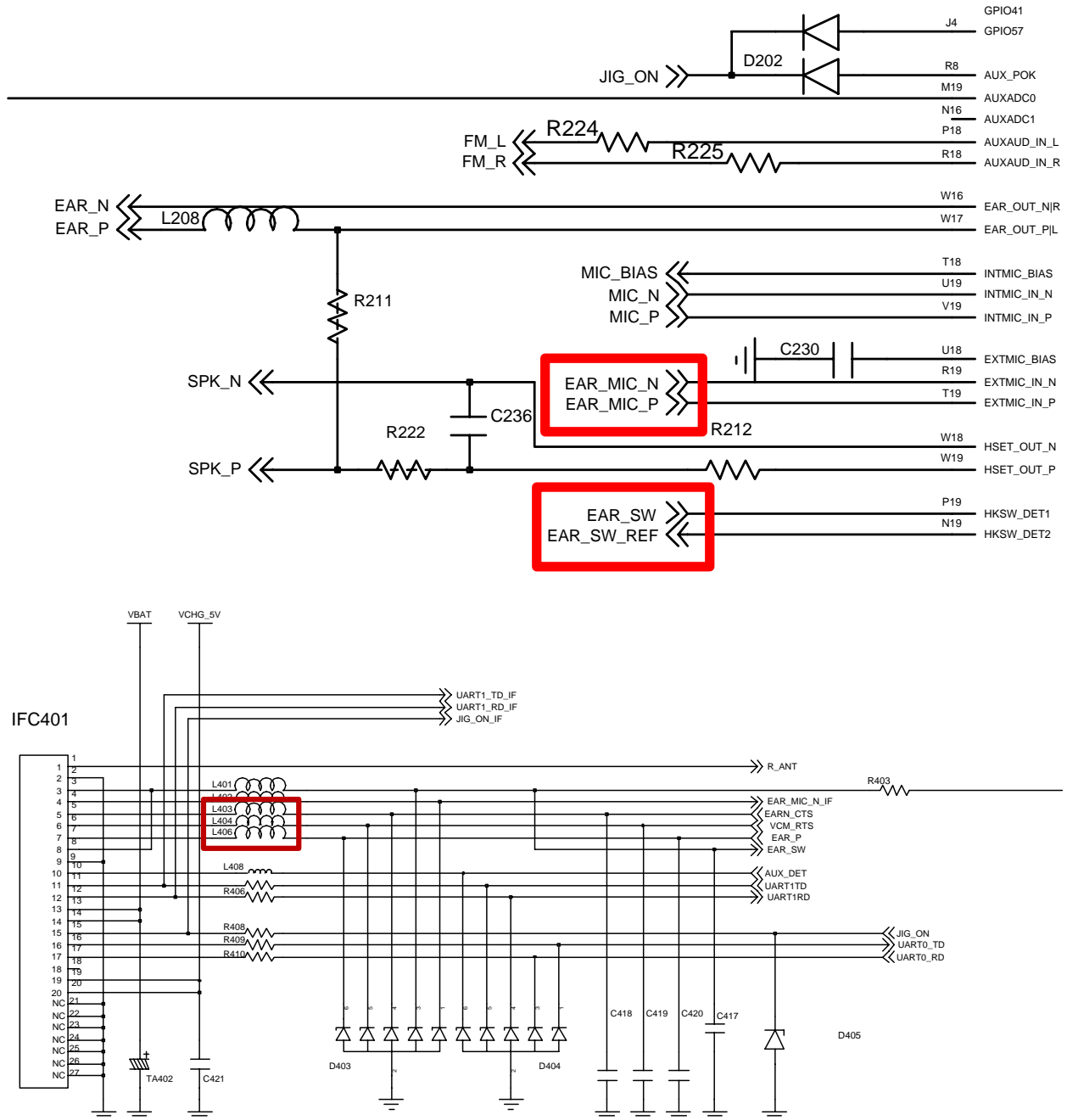




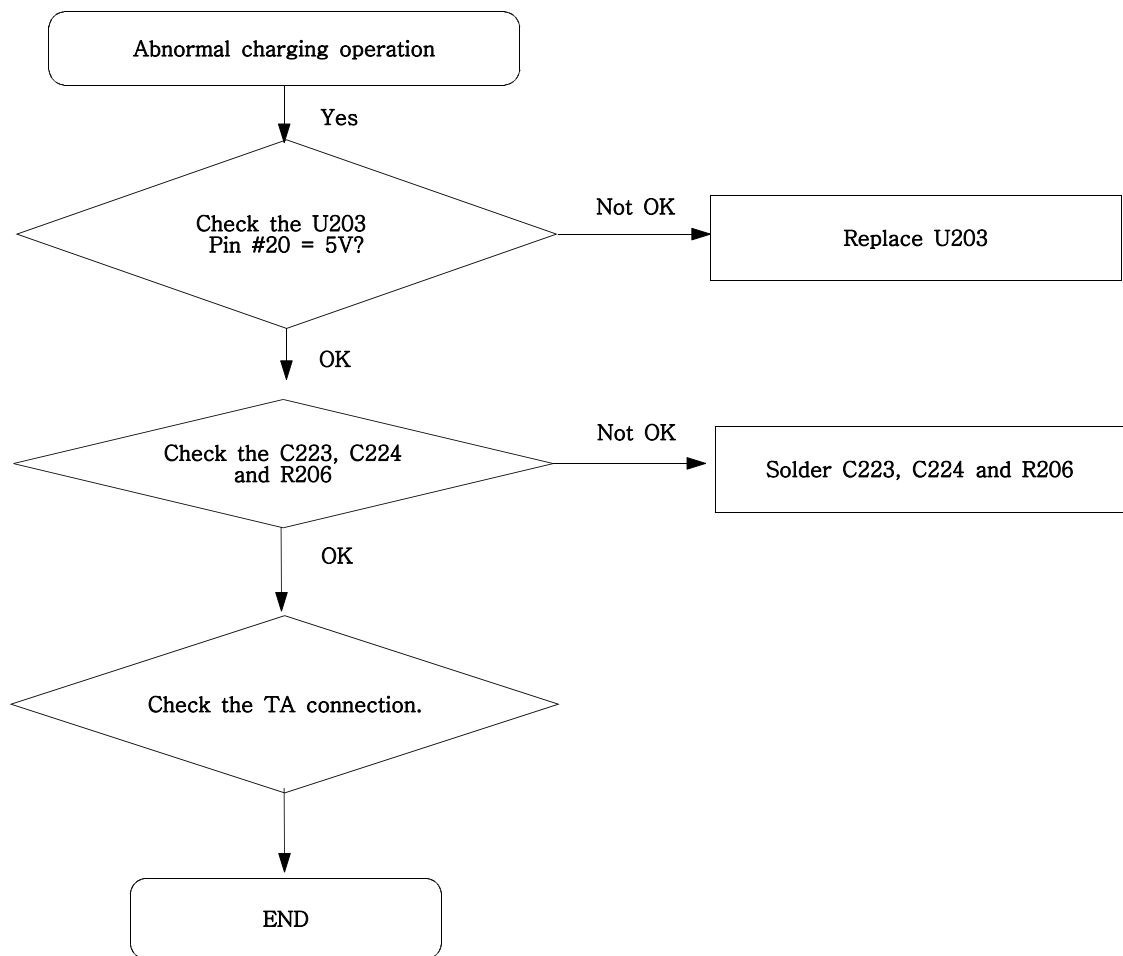


9-5. Earphone Part

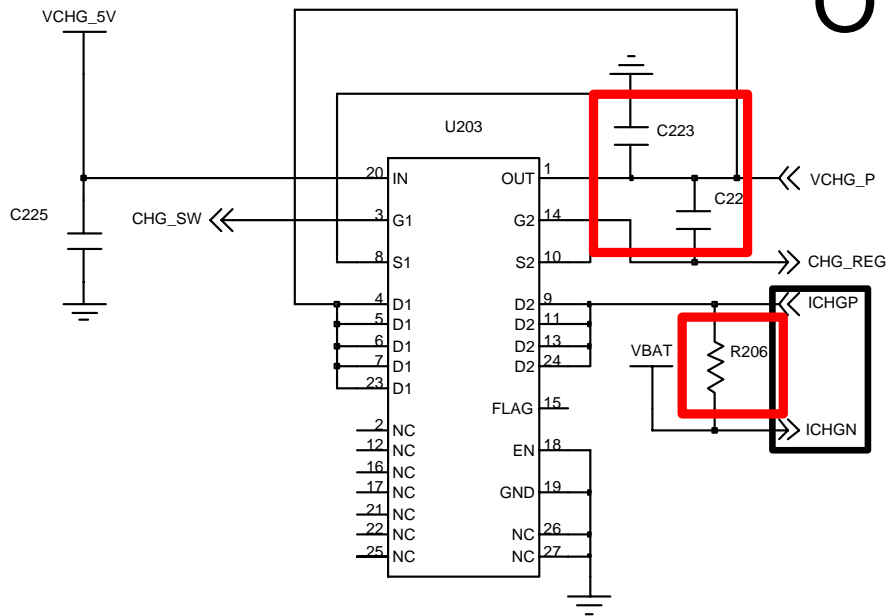




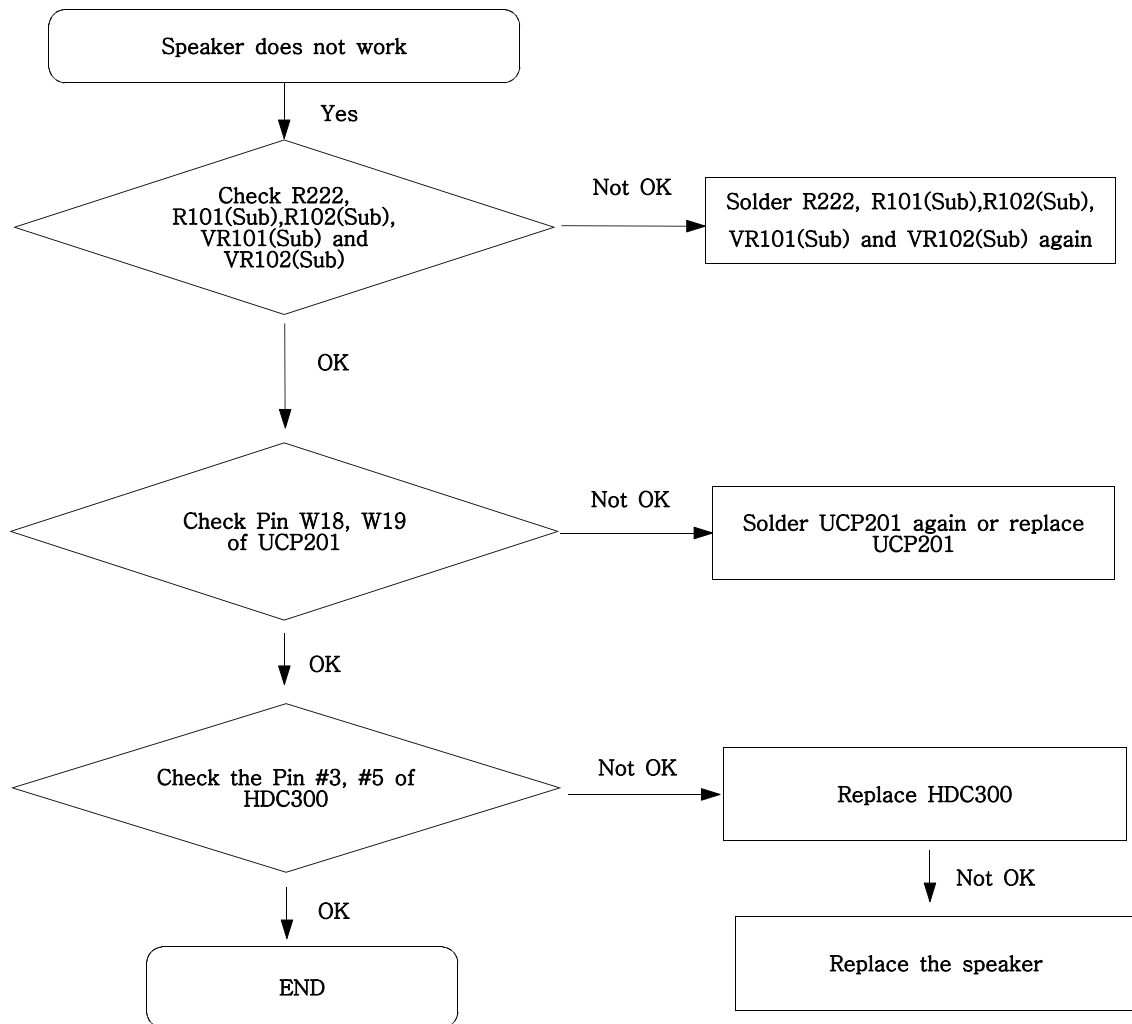
9-6. Charging Part

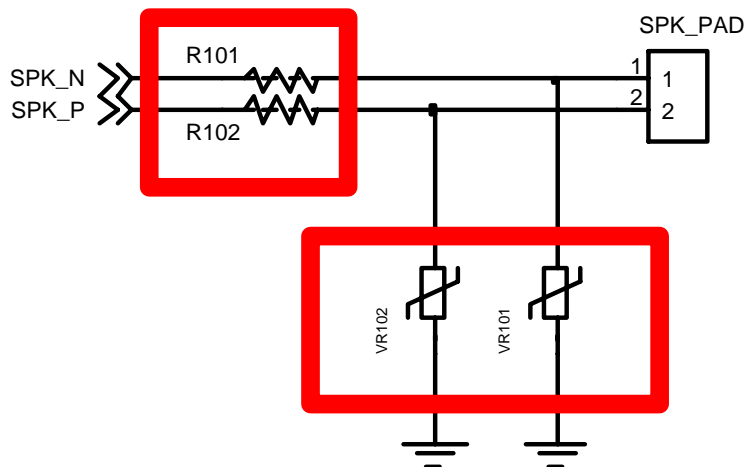
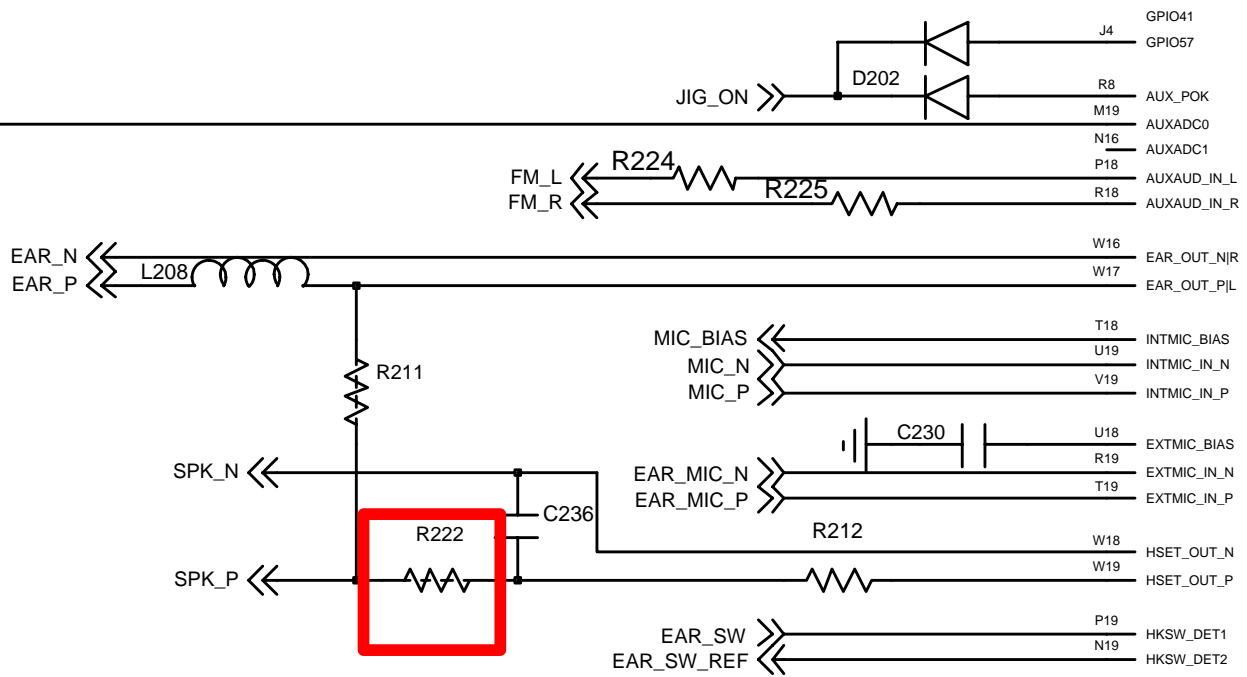


OVP & BTC



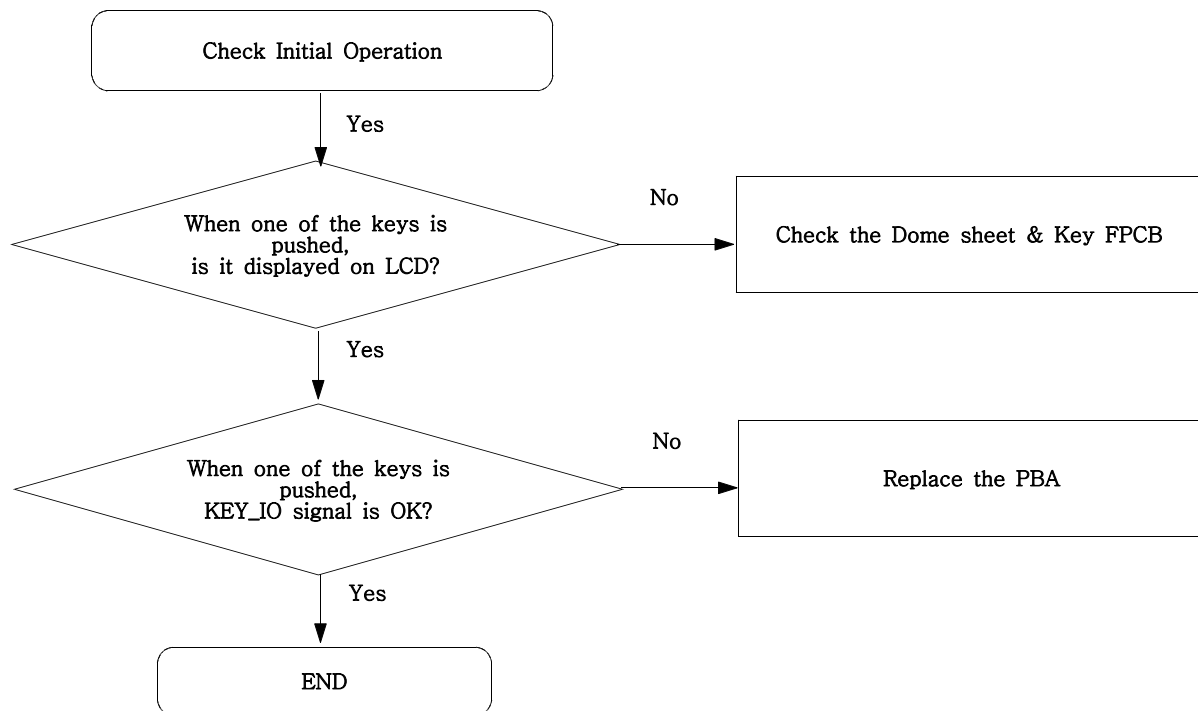
9-7. Speaker Part



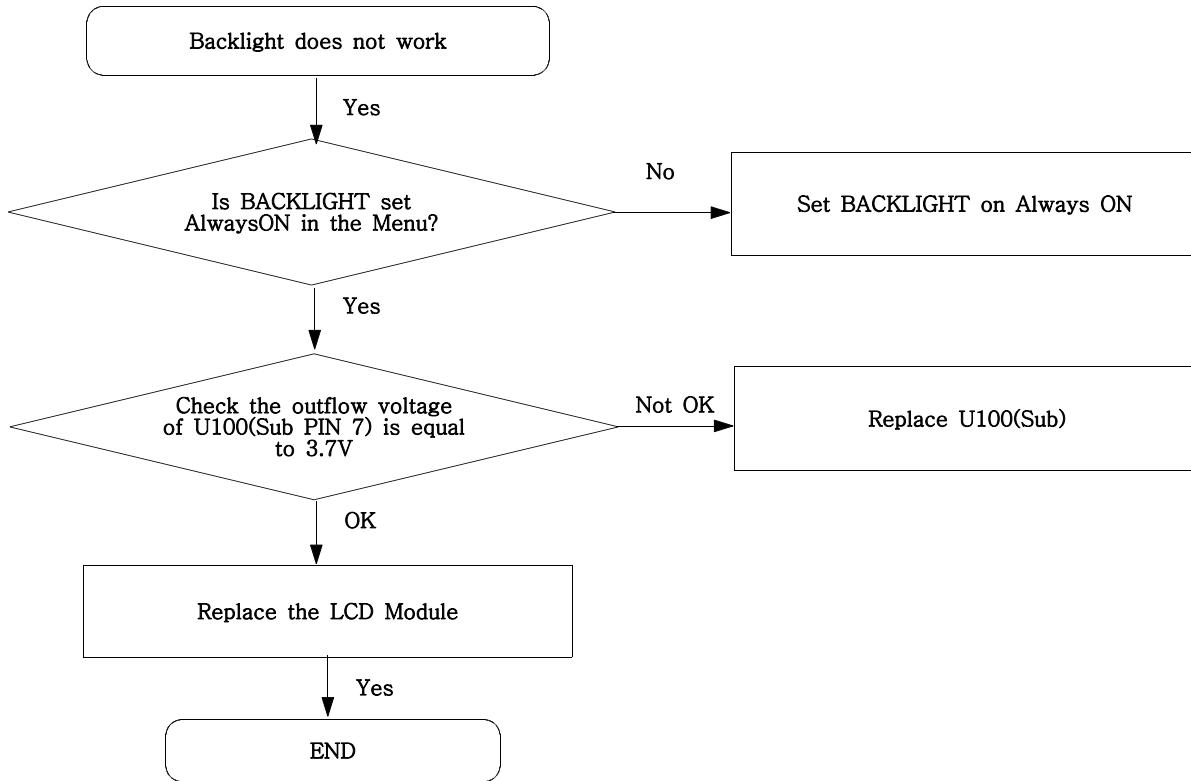


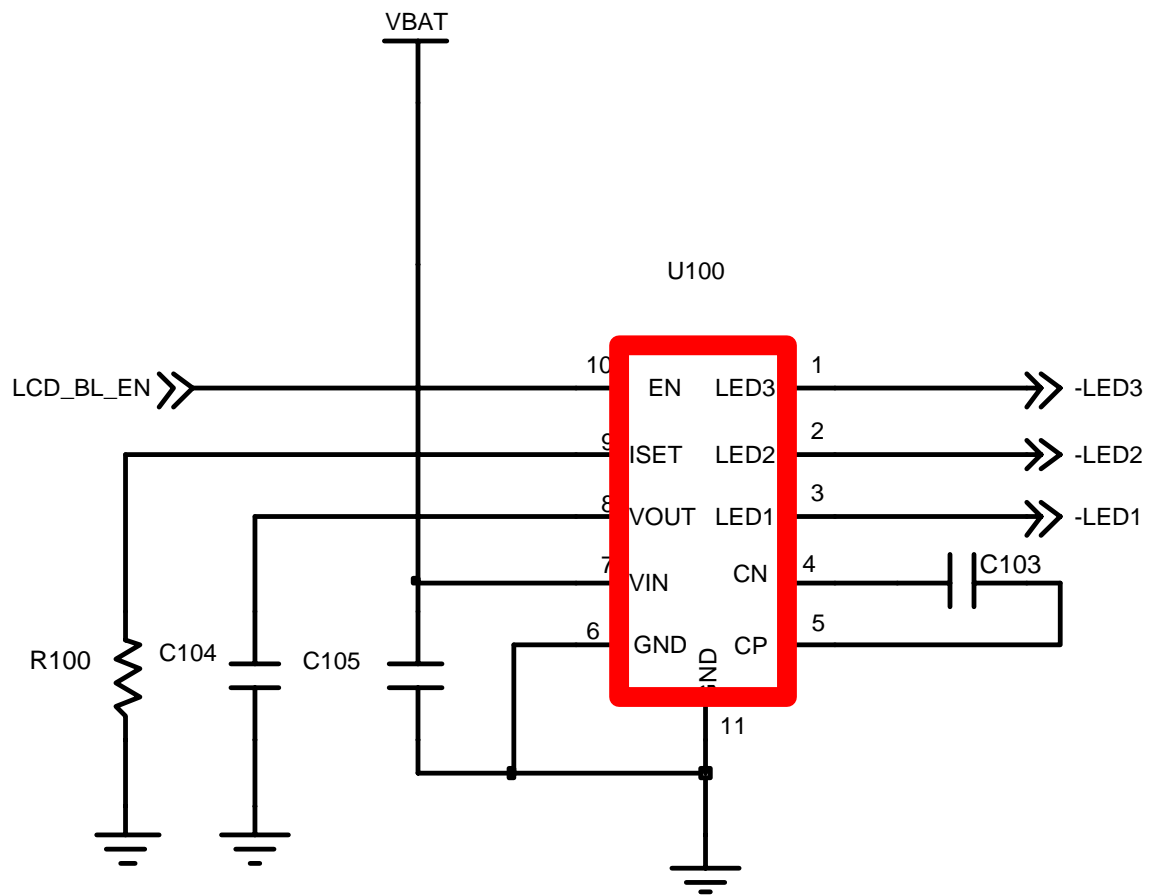
SPEAKER

9-8. Key Data Input



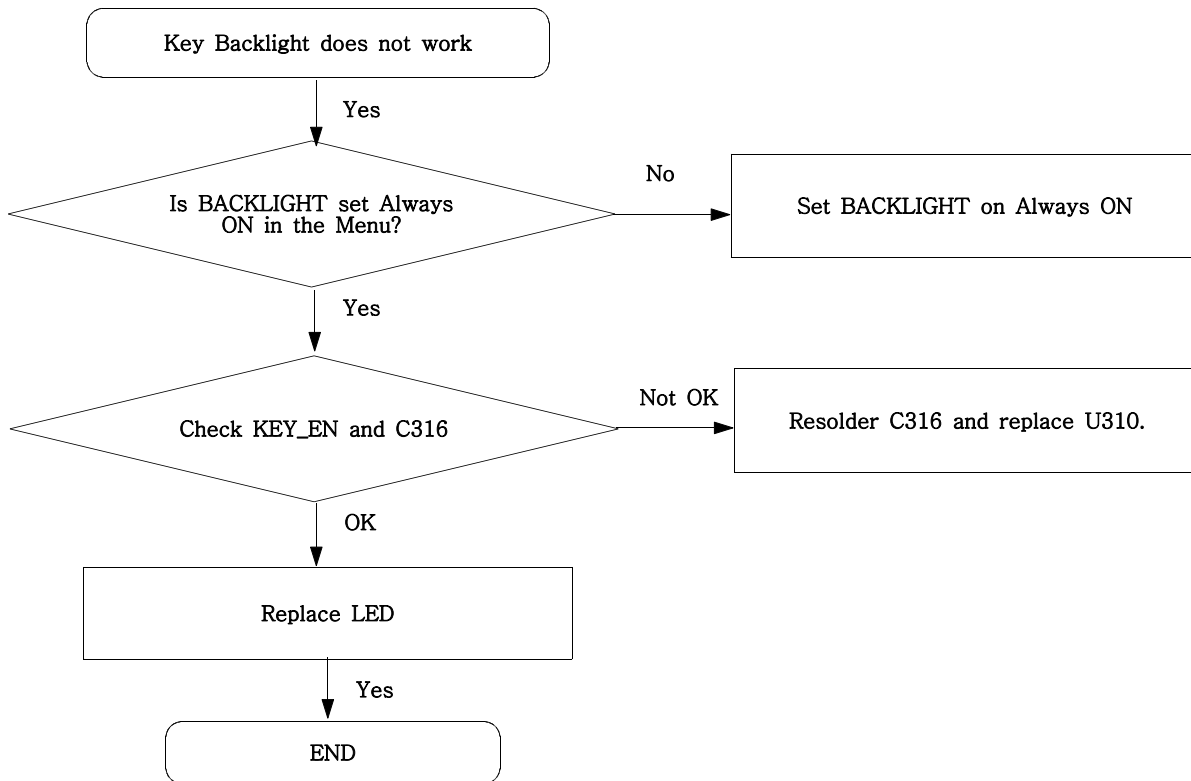
9-9. Back Light (for Color Main LCD)



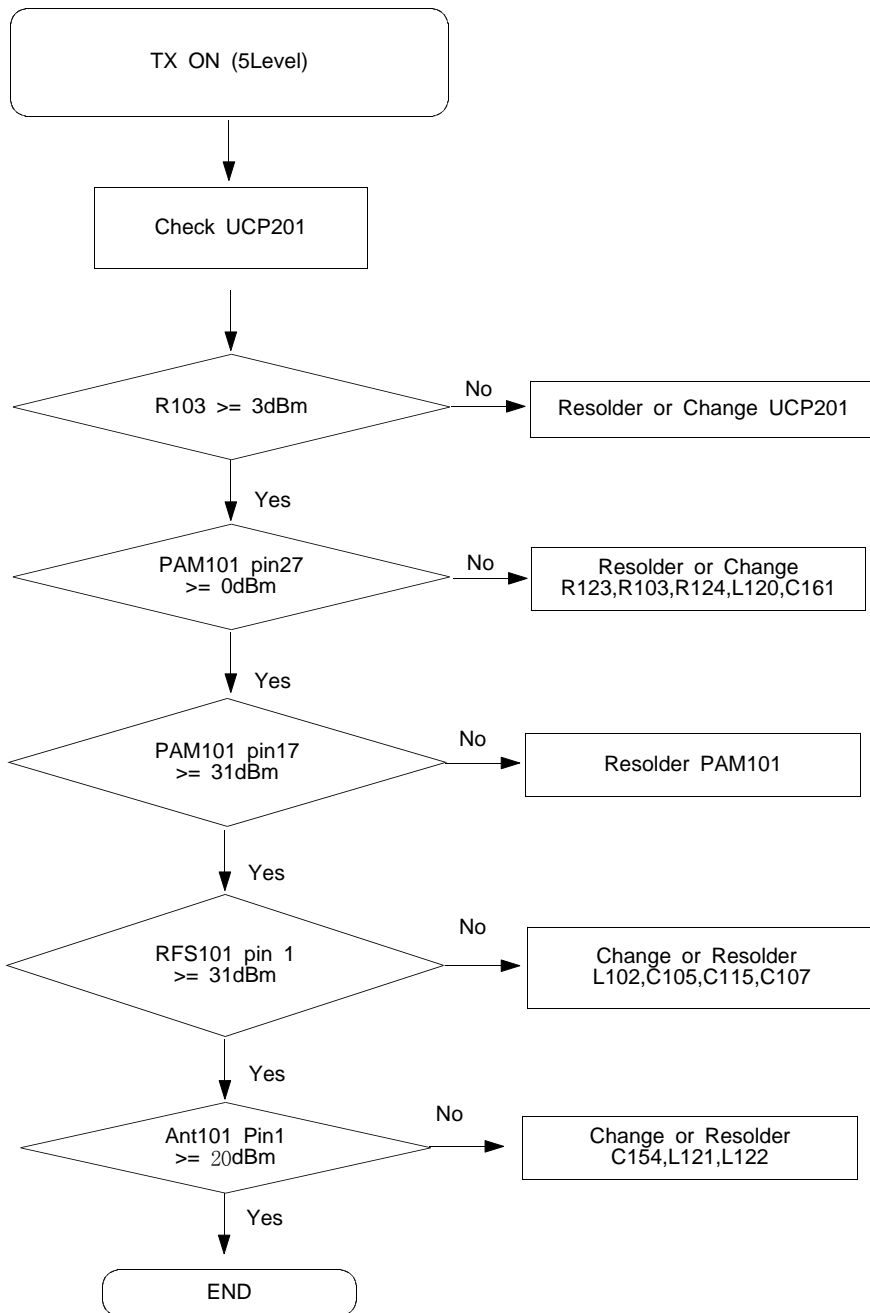


BACKLIGHT IC

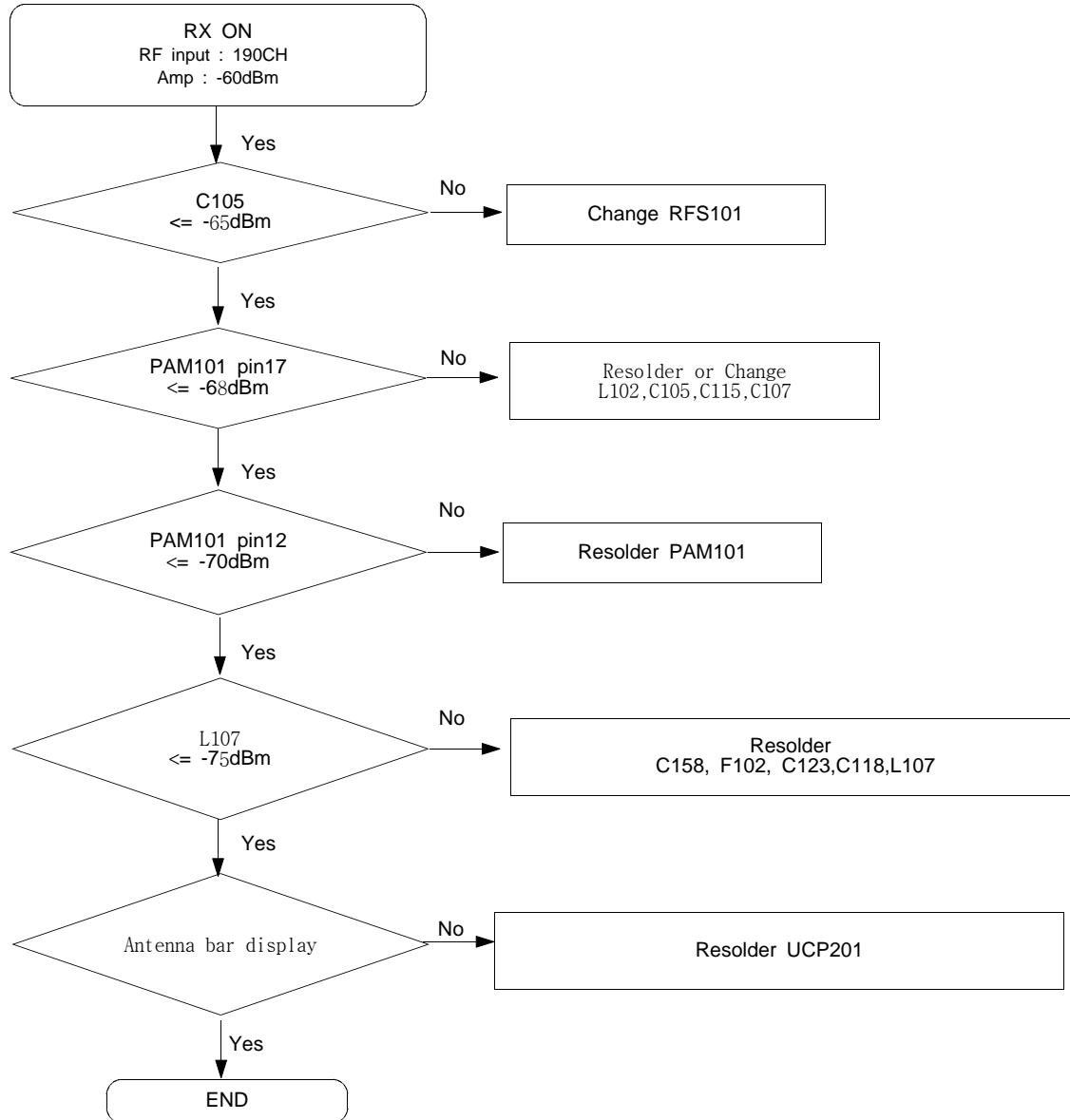
9-10. Key Back Light

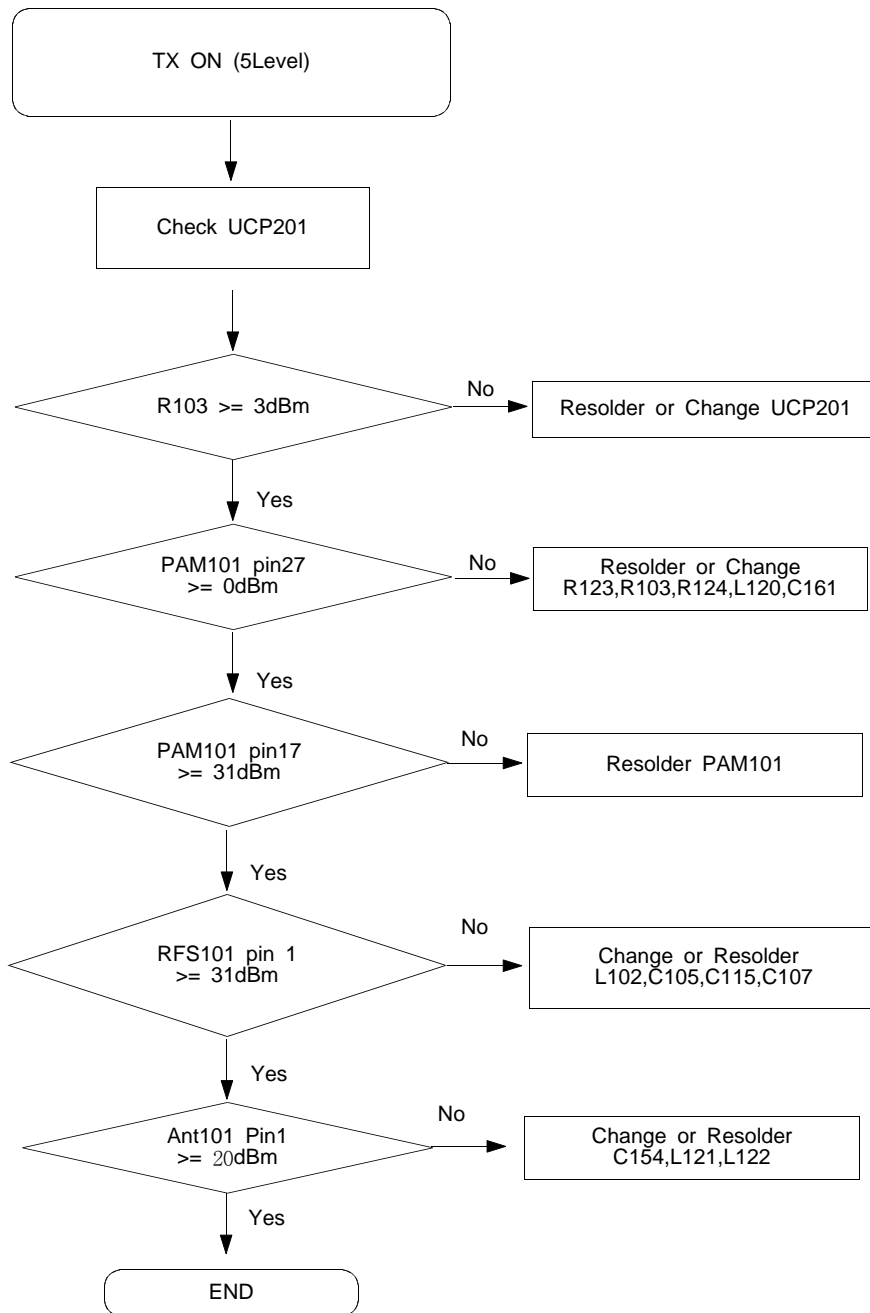




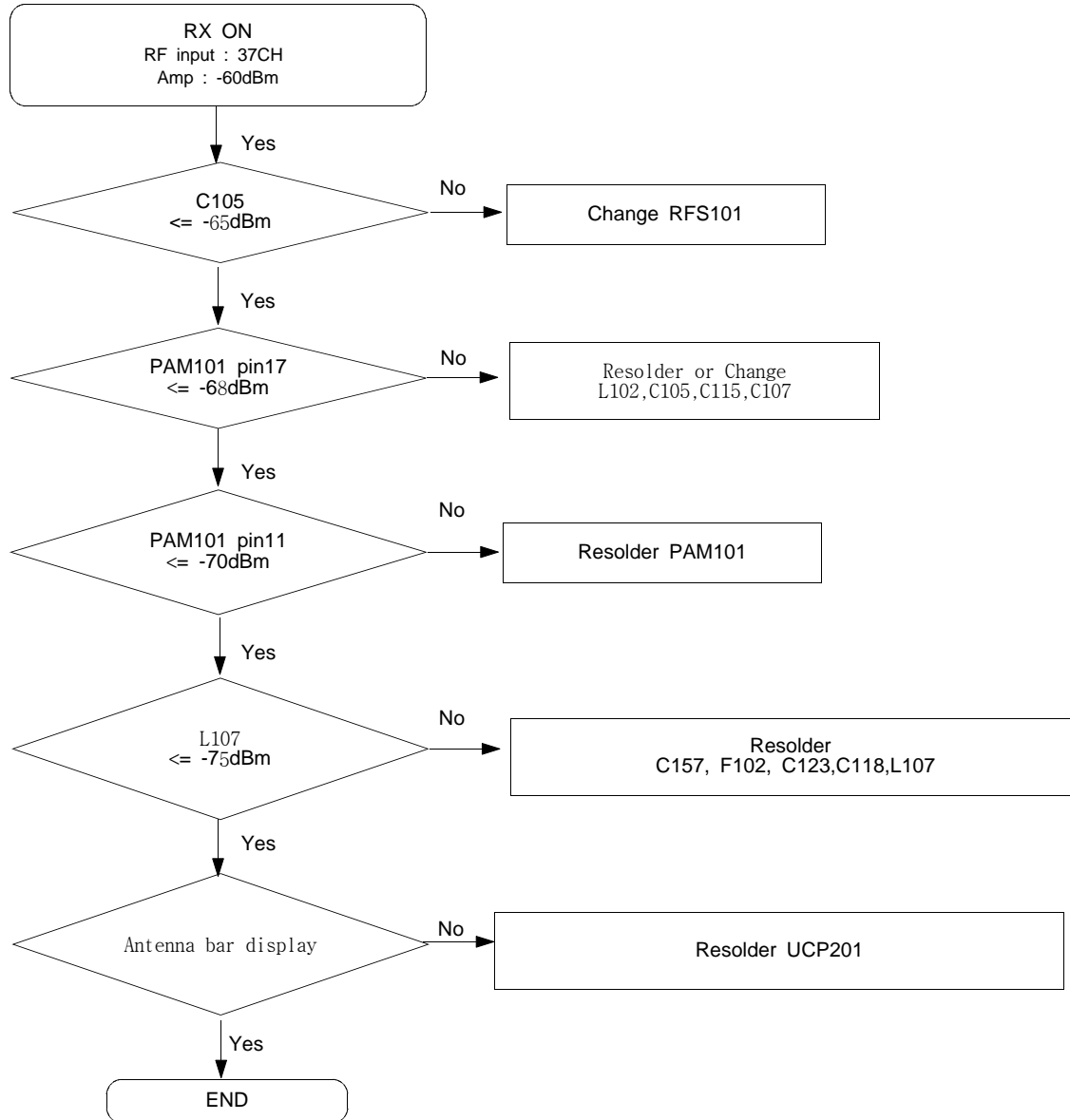
9-11. GSM850 Transmitter

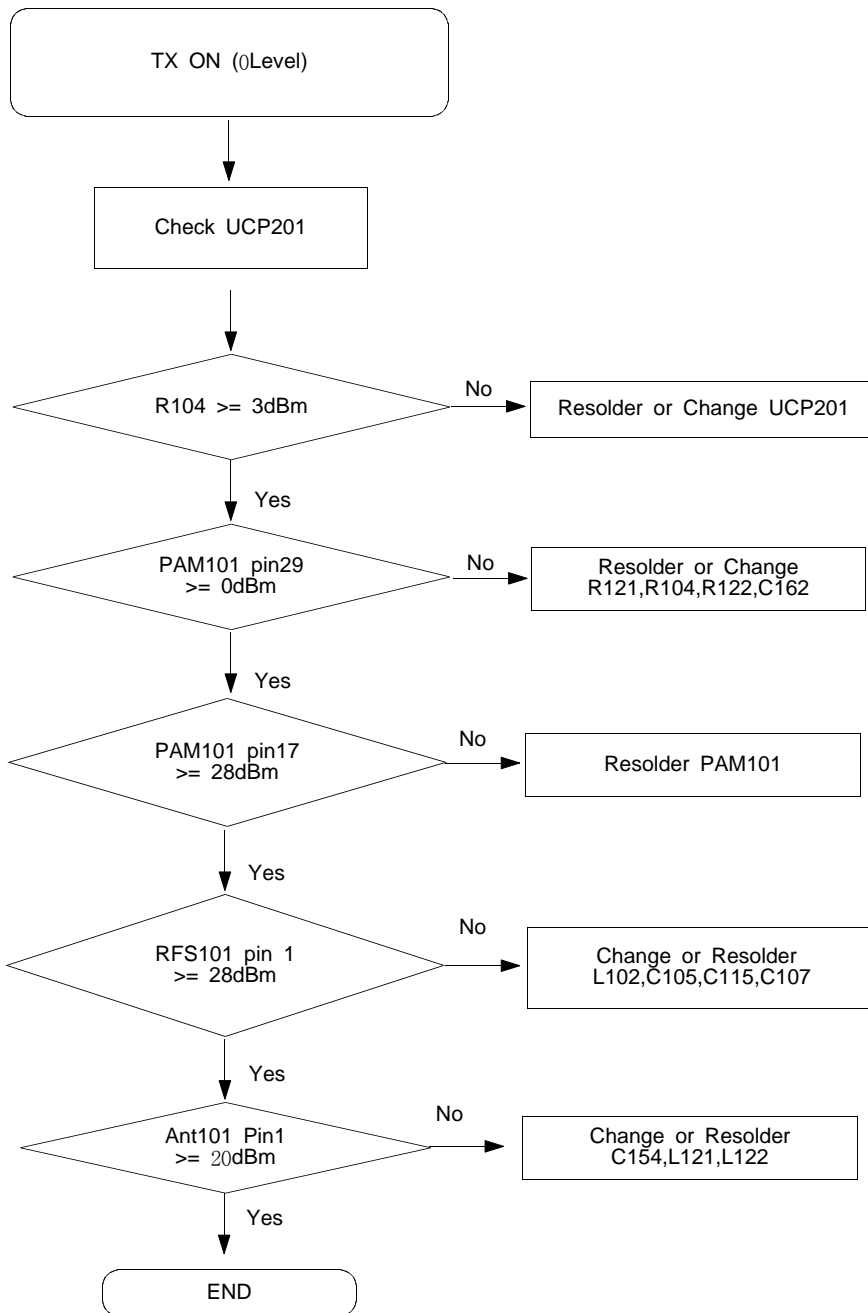
9-12. GSM850 Receiver



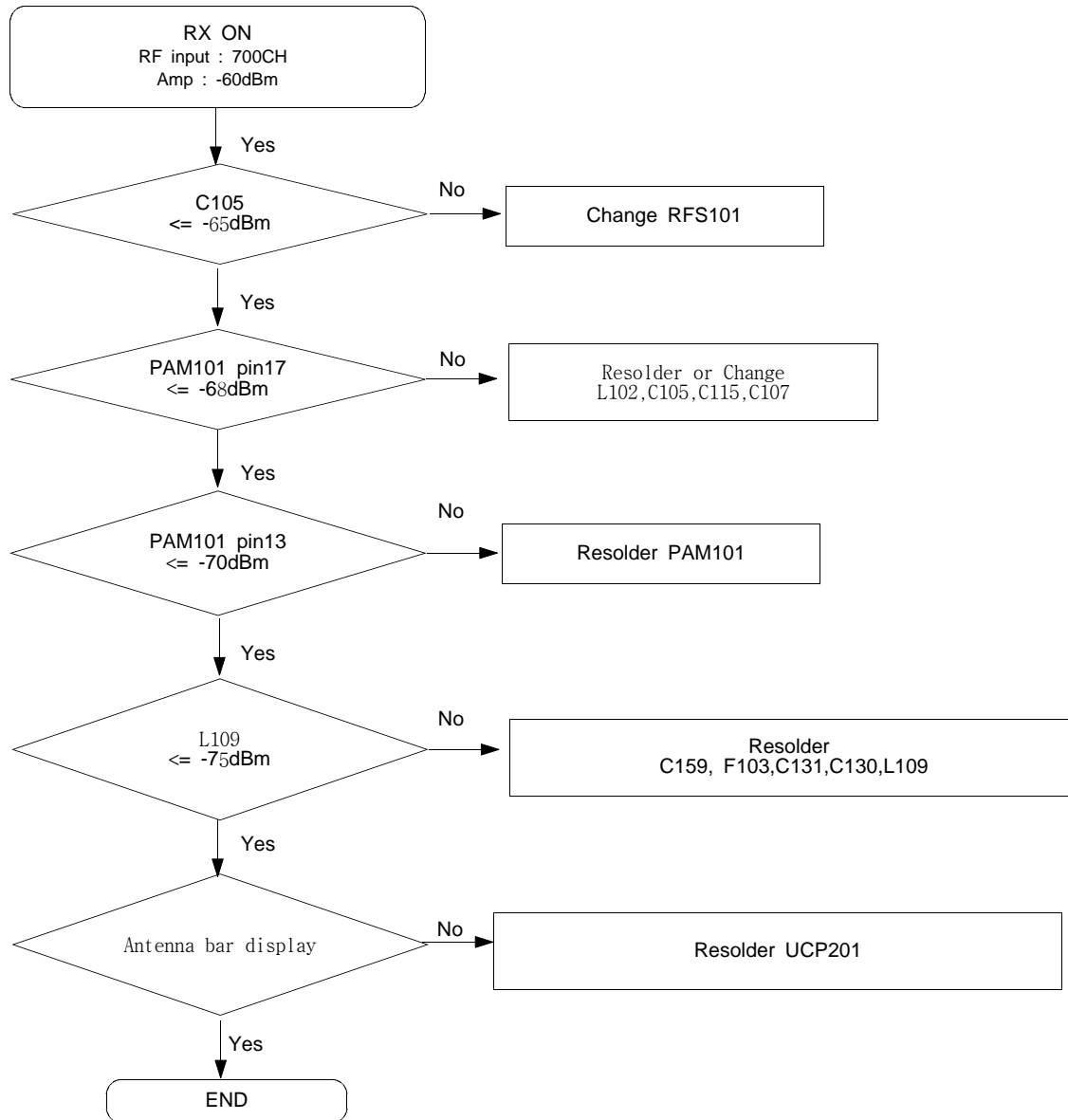
9-13. GSM900 Transmitter

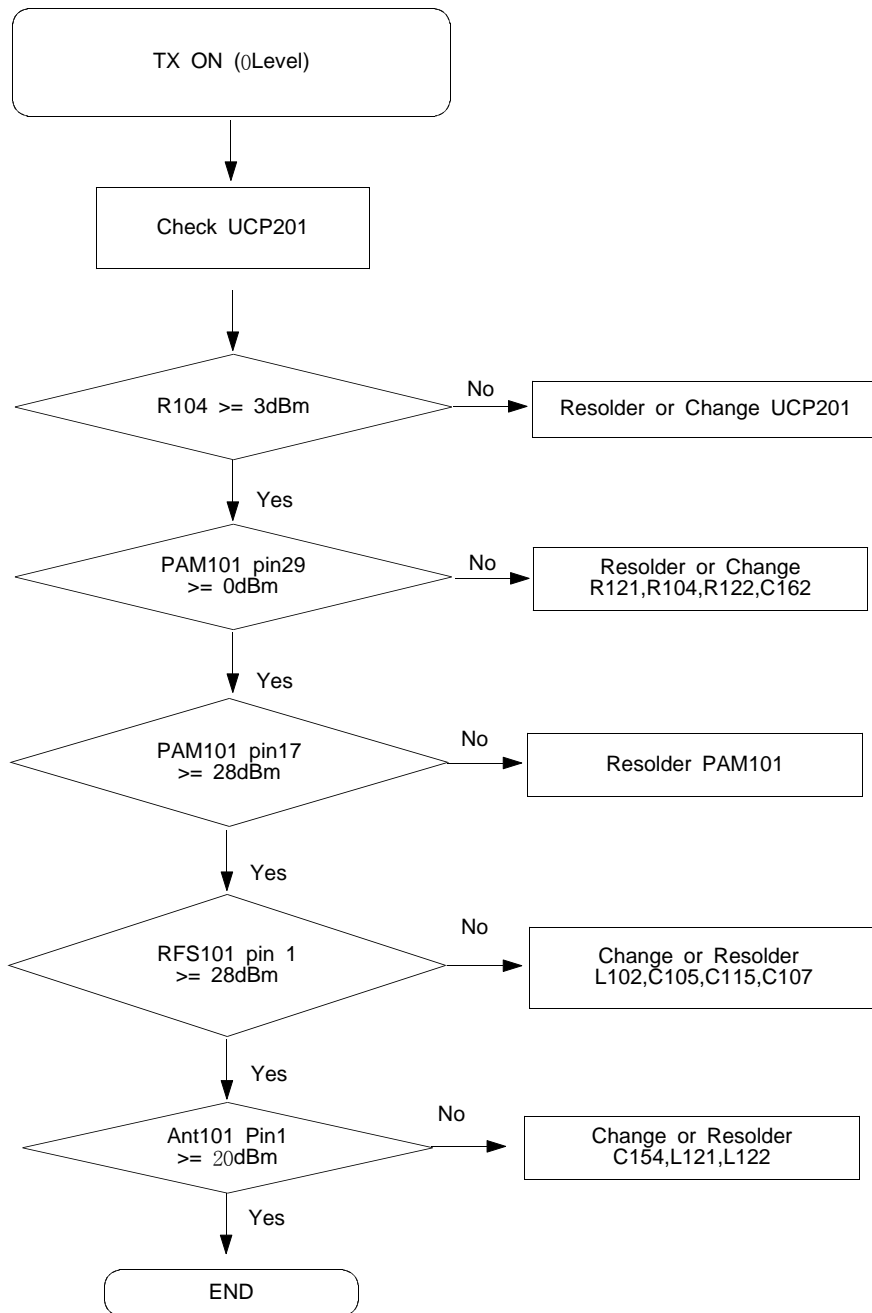
9-14. GSM900 Receiver



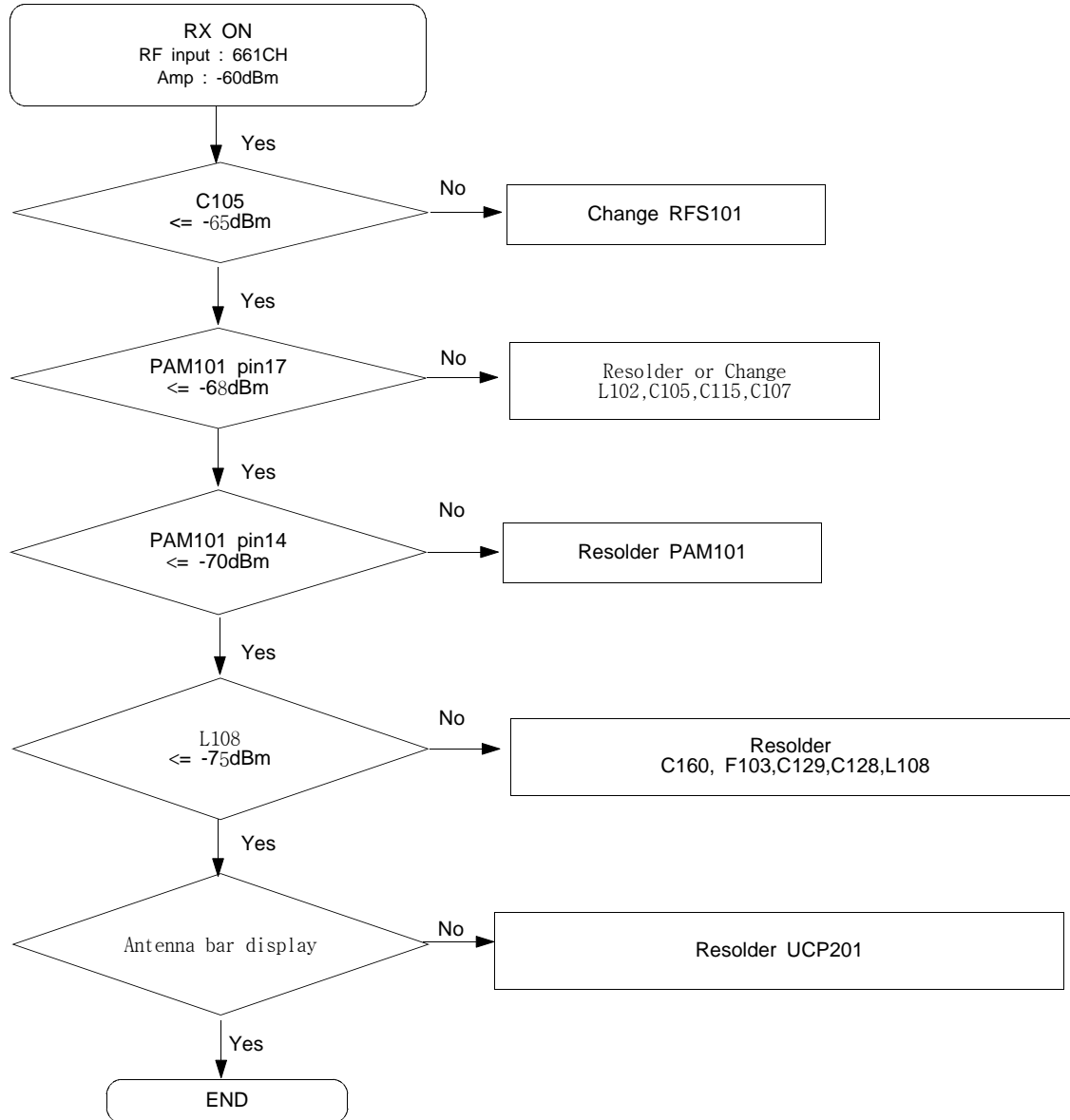
9-15. DCS Transmitter

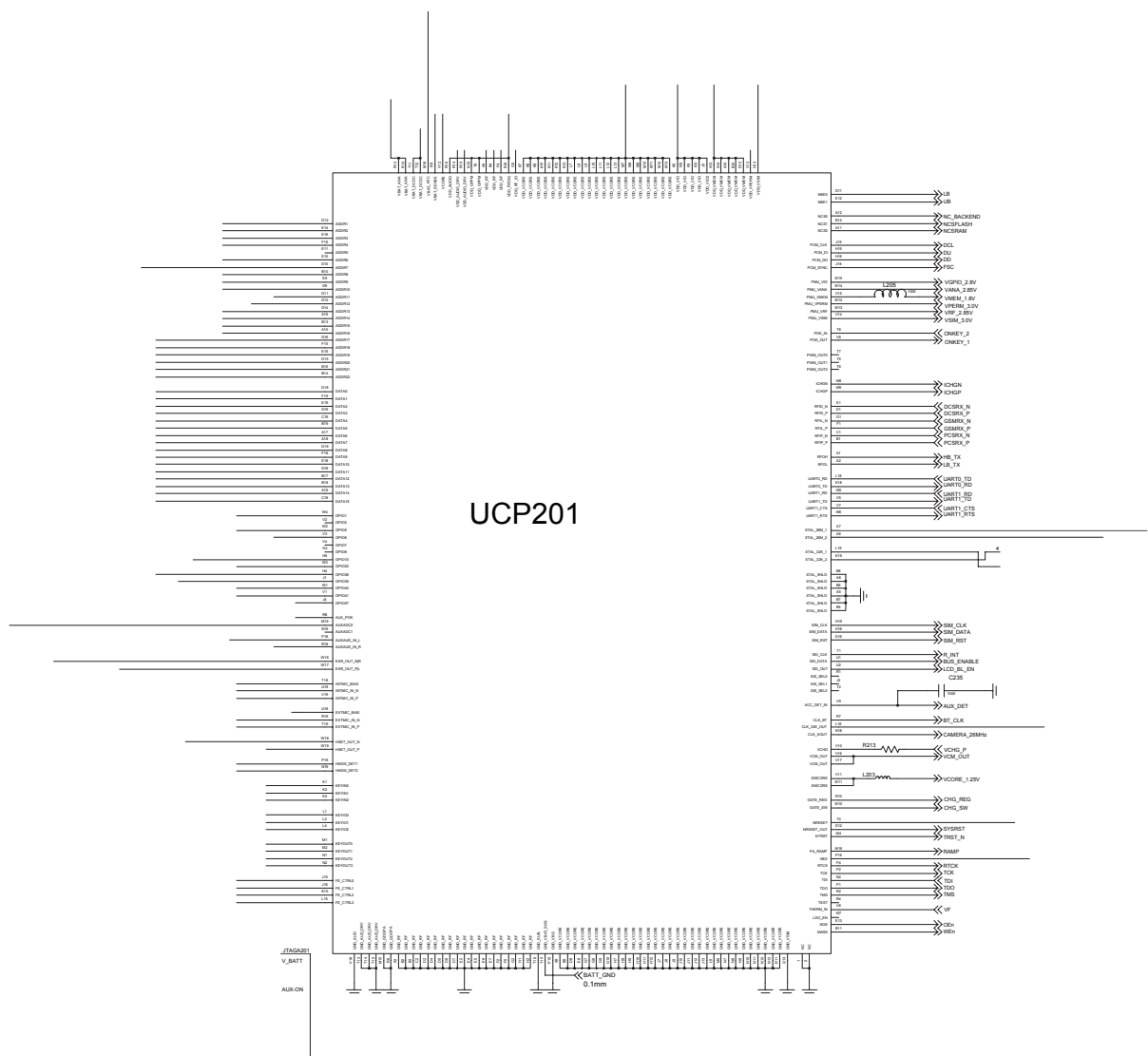
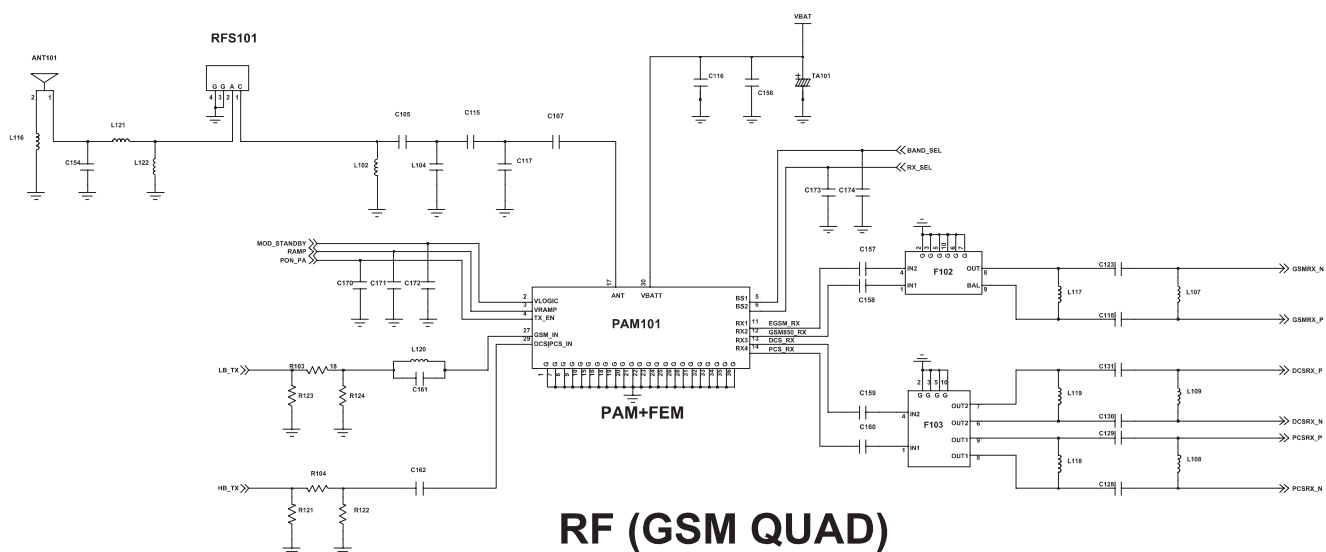
9-16. GSM900 Receiver

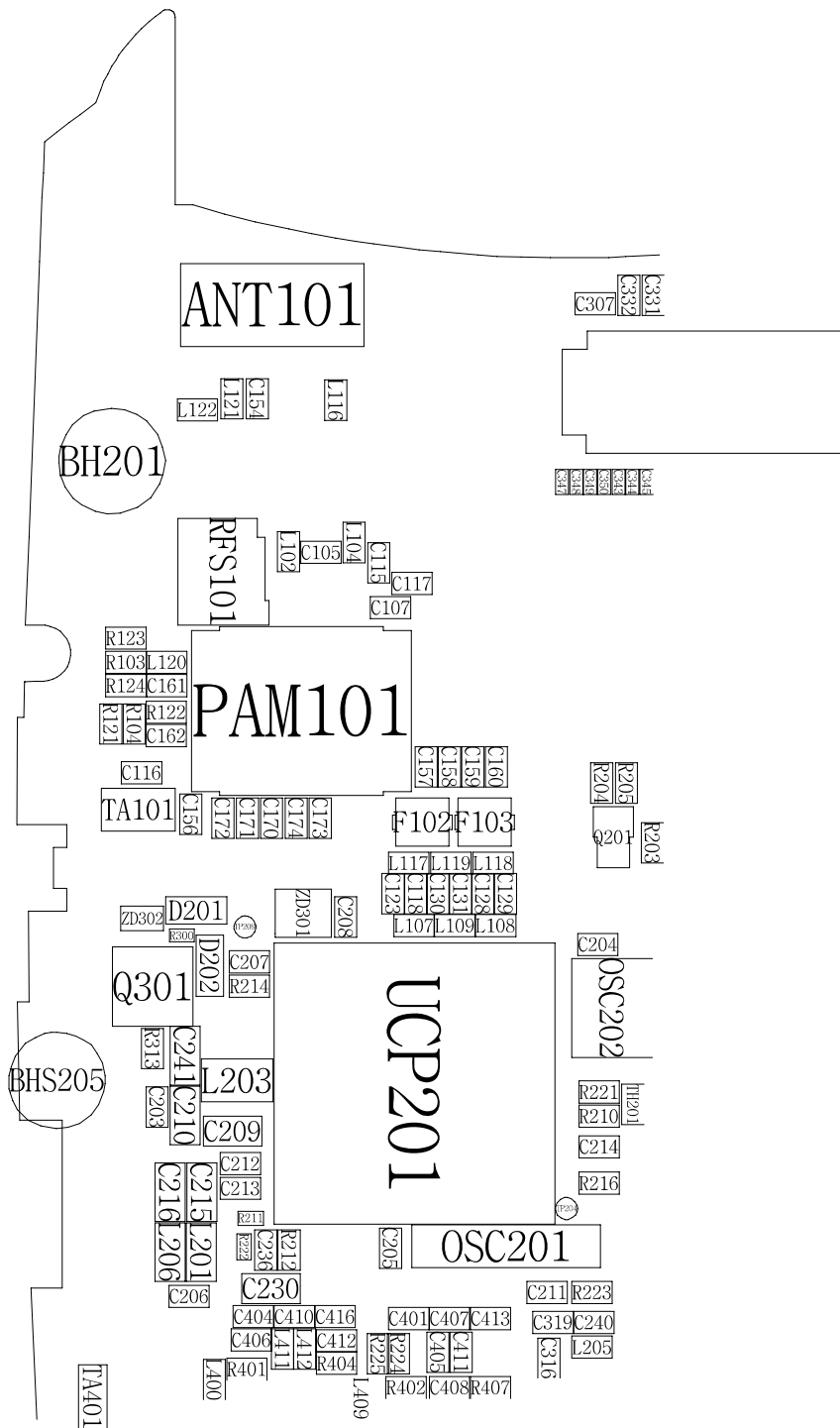


9-17. PCS Transmitter

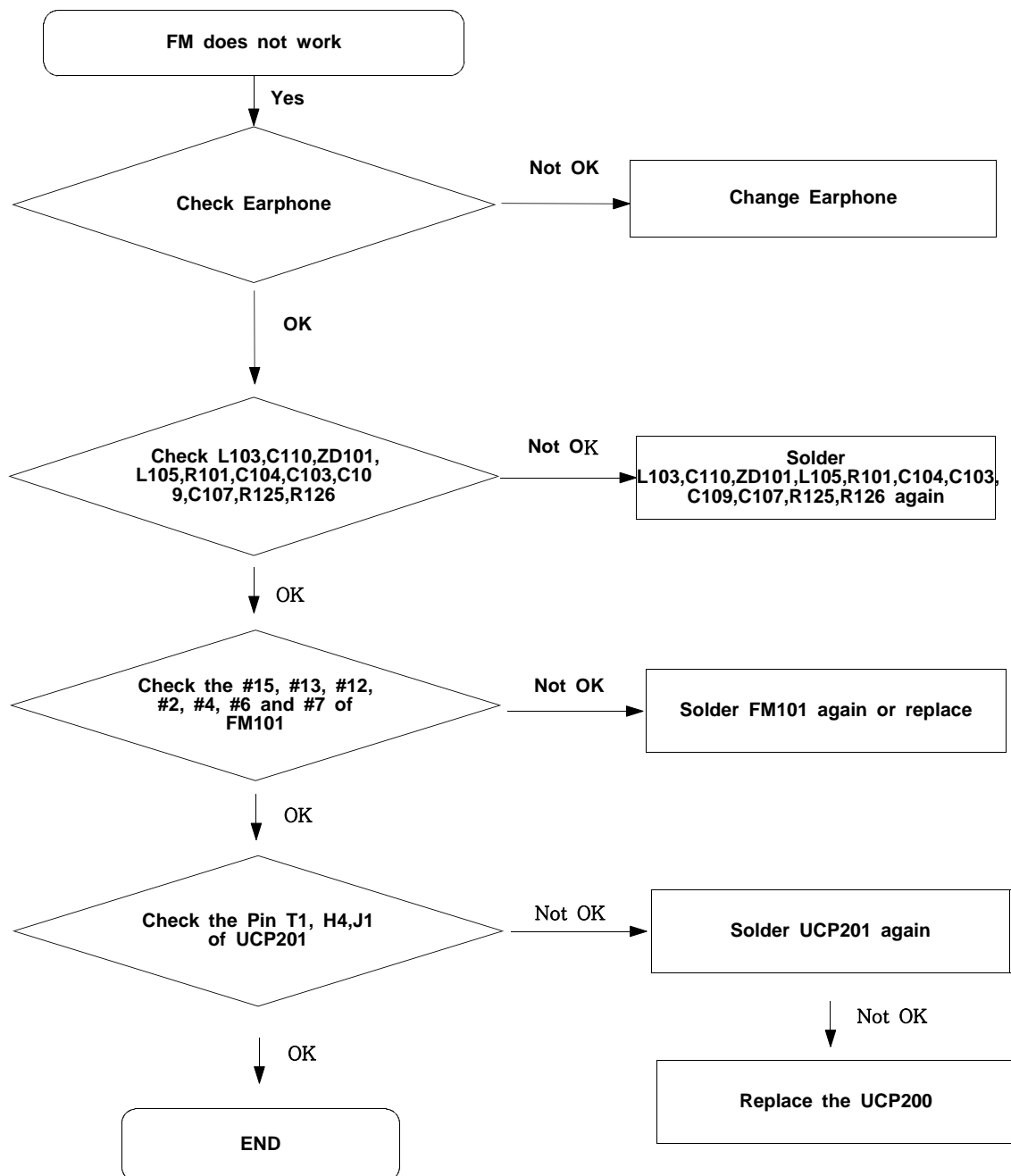
9-18. PCS Receiver

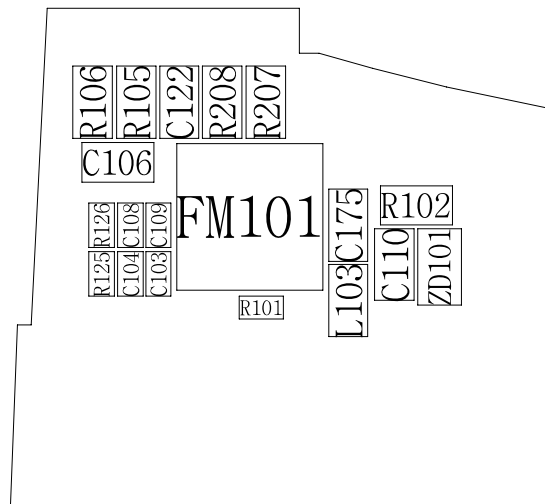
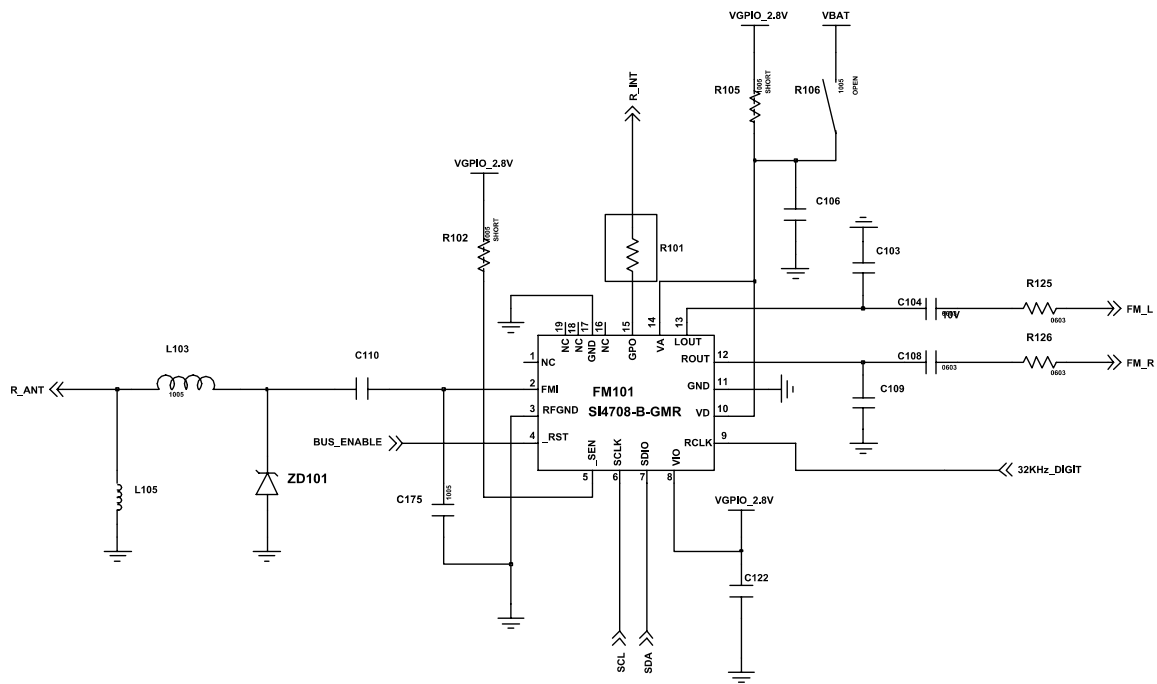






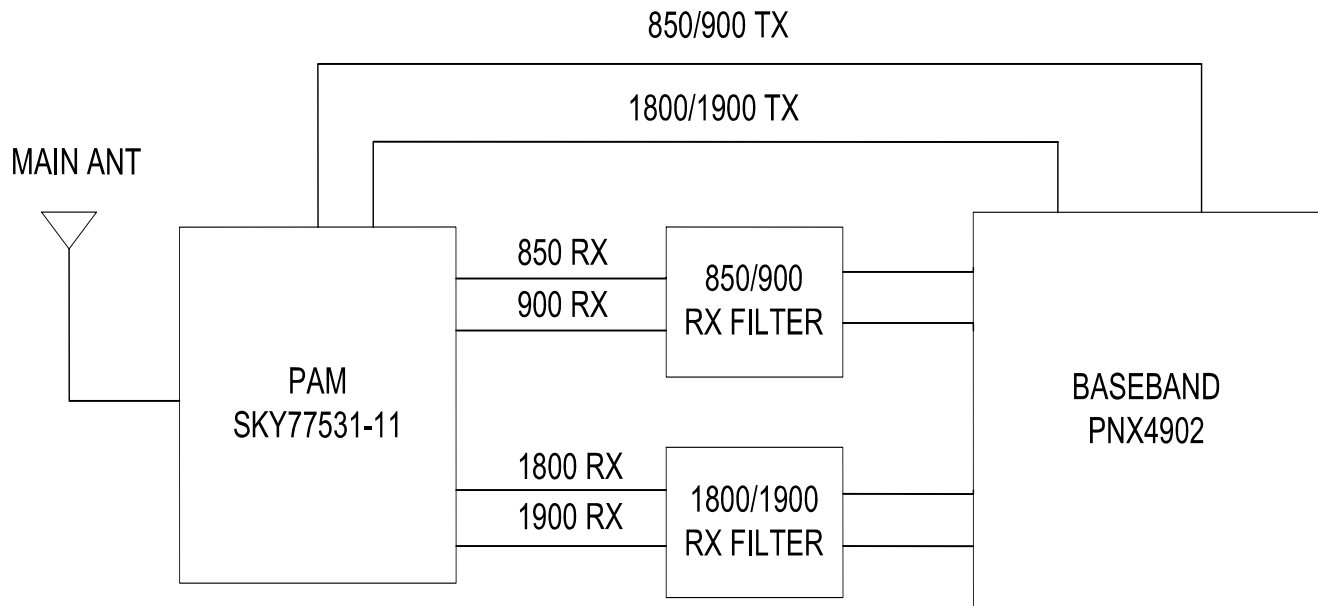
9-19. FM Part



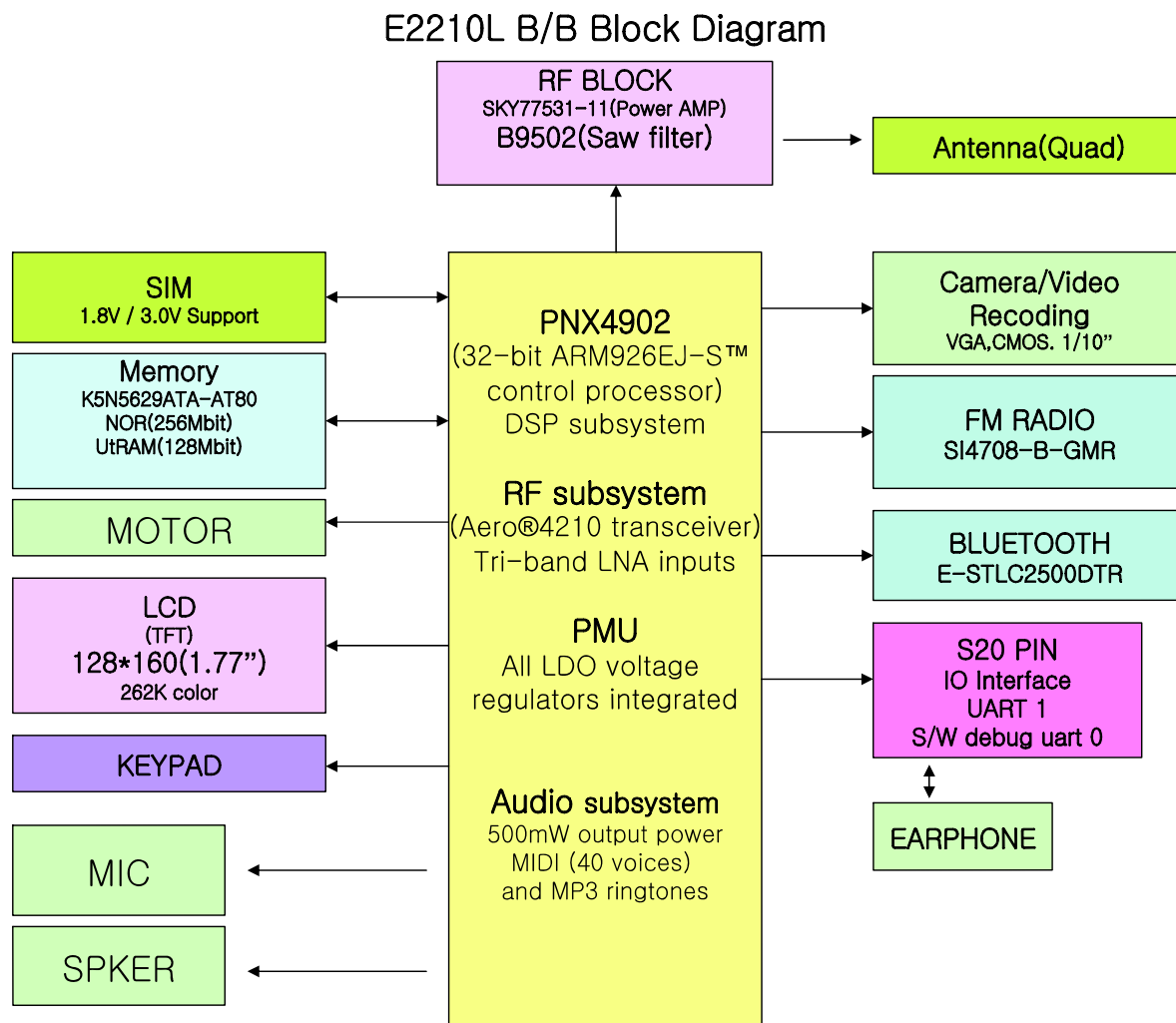


7. Block Diagrams

7-1. RF Solution Block Diagram

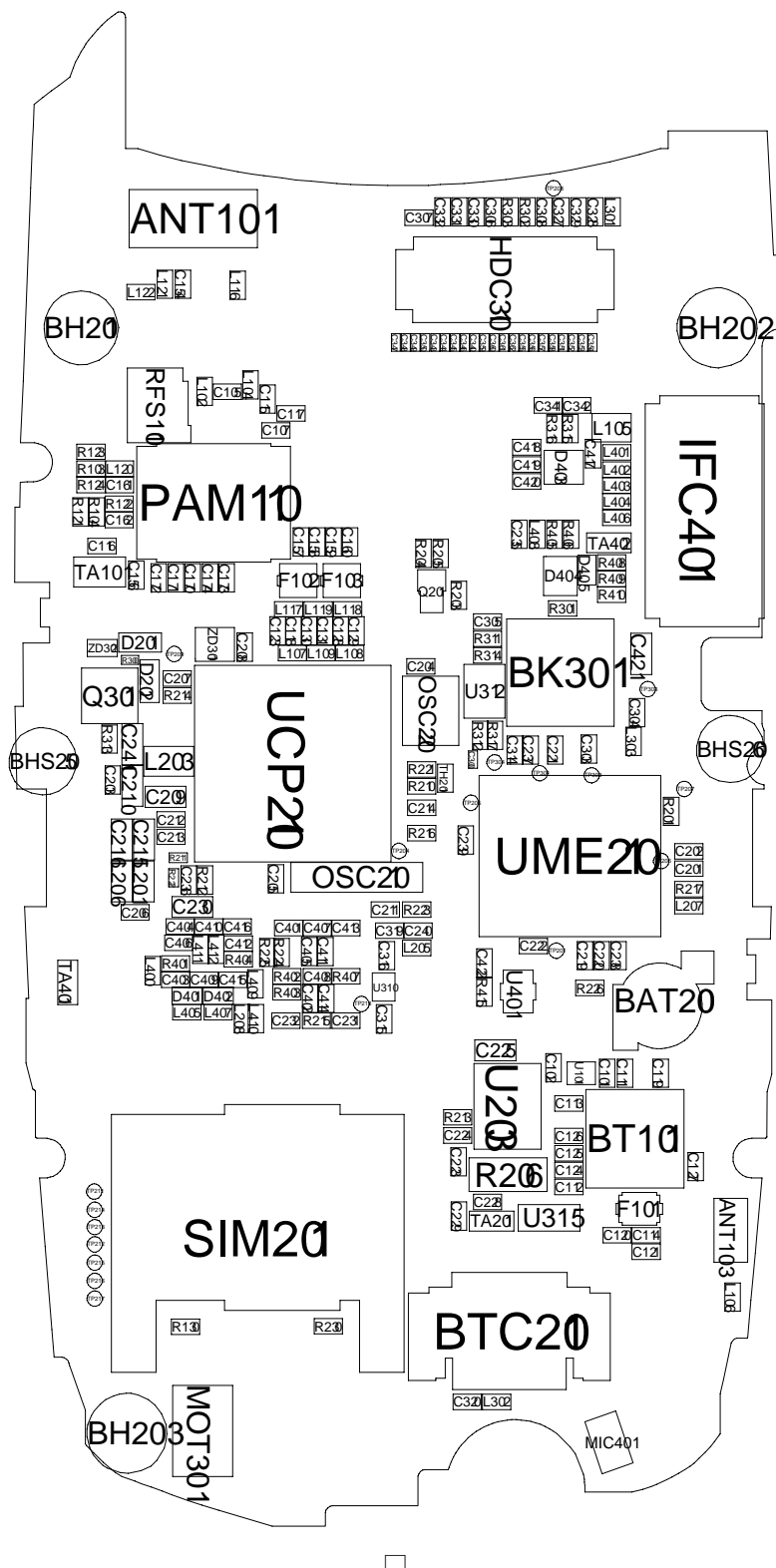


7-2. Base Band Solution Block Diagram



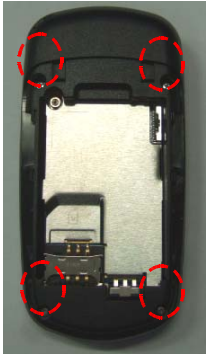

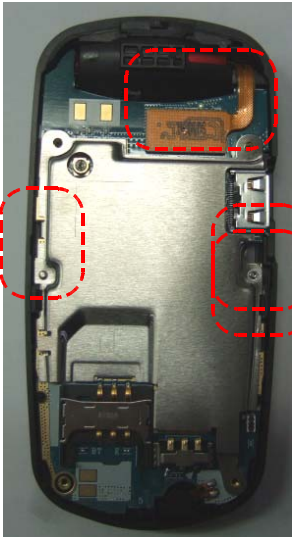
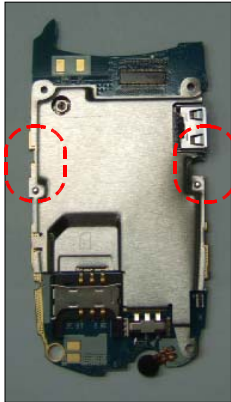
8. PCB Diagrams

8-1. Main Top



11. Disassembly and Assembly Instructions

11-1. Disassembly

<div>1</div> <div>1) Unscrew.</div> <div></div>	<div>2</div> <div>1) Disassemble REAR case.</div> <div></div>
<div>1) Unscrew 4 points at the REAR case. (Be careful not to make scratch and molding damage.)</div>	<div>1) Separate REAR part by using a tool. (Be careful not to make scratch and molding damage!.)</div>
<div>3</div> <div>1) Disassemble rear case and PBA</div> <div></div>	<div>4</div> <div>1) Disassemble SHIELD CAN.</div> <div></div>
<div>1) Disconnect connector after removing REAR case. (Be careful not to damage hook.)</div> <div>2) Lift the PBA. Be careful not to damage Locker.</div>	<div>1) Unscrew 2 points at the SHIELD CAN. Separate SHIELD CAN.</div>

<p>5</p> <p>Separate FOLDER ASSY and KEYPAD</p> 	<p>6</p> <p>1) Disassemble FORNT</p> 
<p>1) Separate KEY PAD from FOLDER ASSY</p>	<p>1) Press HINGE and disjoint FOLDER.</p>
<p>7</p> <p>1) Separate UPPER and LOWER</p>  <p>1. Remove screws.</p> <p>2. Separate LOWER and UPPER by using groove.</p>	<p>8</p> <p>1) Separate UPPER and LOWER</p> 
<p>1) Remove screws.</p> <p>2) Make a gap at top side by using the groove.</p>	<p>1) Disassemble UPPER and LOWER by using a tool, carefully.</p>

<div data-bbox="162 224 227 283" data-label="Text">9</div> <div data-bbox="250 247 792 300" data-label="Text">1) Separate LOWER and LCD</div> <div data-bbox="250 321 550 405" data-label="Text">1. Separate SPEAKER from the groove.</div> <div data-bbox="224 445 459 861" data-label="Image"> </div> <div data-bbox="548 430 776 657" data-label="Text">2. Be careful not to damage the tape between LCD and LOWER.</div> <div data-bbox="548 674 781 861" data-label="Text">3. Be careful not to damage CAMERA and CON TO CON .</div>	<div data-bbox="821 224 886 283" data-label="Text">10</div> <div data-bbox="909 247 1459 300" data-label="Text">1) Disassemble LCD ASSY</div> <div data-bbox="1075 457 1269 831" data-label="Image"> </div>
<div data-bbox="162 961 568 1003" data-label="Text">1) Separate LOWER and LCD ASSY.</div>	<div data-bbox="821 945 1438 1024" data-label="Text">1) Separate SPEAKER, CAMERA and CON TO CON from LCD LCD ASSY.</div>

11-2. Assembly

<p>1</p> <p>Put in the LCD ASSY</p> 	<p>2</p> <p>Assemble FRONT Assy</p> <p>3.Lock up lower part 2.middle 1. top</p>  <p>Check the GAP</p>  
<p>1) Insert LCD in the LOWER's groove . Then Insert SPEAKER, CAMERA, and CON TO CON in the LOWER's groove. (Be careful not to damage CON TO CON)</p>	<p>1) Assemble FOLDER.(Be careful not to damage the Hooks on LOWER & UPPER) 2) Screw 2 points at FOLDER ASSY.</p>
<p>3</p> <p>Assemble FRONT</p> <p>1</p>  <p>3</p>  <p>2</p> 	<p>4</p> <p>Assemble KEYPAD</p> 
<p>1) Insert CON TO CON in the FRONT's groove. 2) Assemble HINGE.</p>	<p>1) Put the KEY PAD on the FRONT's right position</p>

<div data-bbox="170 220 235 273" data-label="Text">5</div> <div data-bbox="259 241 803 304" data-label="Text">Assemble SHIELD CAN</div> <div data-bbox="355 396 581 762" data-label="Image"> </div>	<div data-bbox="836 220 901 273" data-label="Text">6</div> <div data-bbox="909 241 1453 304" data-label="Text">Assemble PBA</div> <div data-bbox="868 346 1079 661" data-label="List-Group"> <ol style="list-style-type: none"> 1. Be careful of the FRONT's Hook 2. Connect CON TO CON. 3. Be careful of the FRONT's Hook </div> <div data-bbox="1149 390 1437 823" data-label="Image"> </div>
<div data-bbox="154 924 803 966" data-label="Text">1) Screw 2 points at the SHIELD CAN.</div>	<div data-bbox="812 924 1469 966" data-label="Text">1) Assemble FRONT ASSY and PBA.</div>
<div data-bbox="170 976 235 1039" data-label="Text">7</div> <div data-bbox="203 1060 771 1123" data-label="Text">Assemble rear case</div> <div data-bbox="313 1155 636 1690" data-label="Image"> </div>	
<div data-bbox="154 1753 803 1816" data-label="Text">1) Assemble rear case and screw 4 points.</div>	

