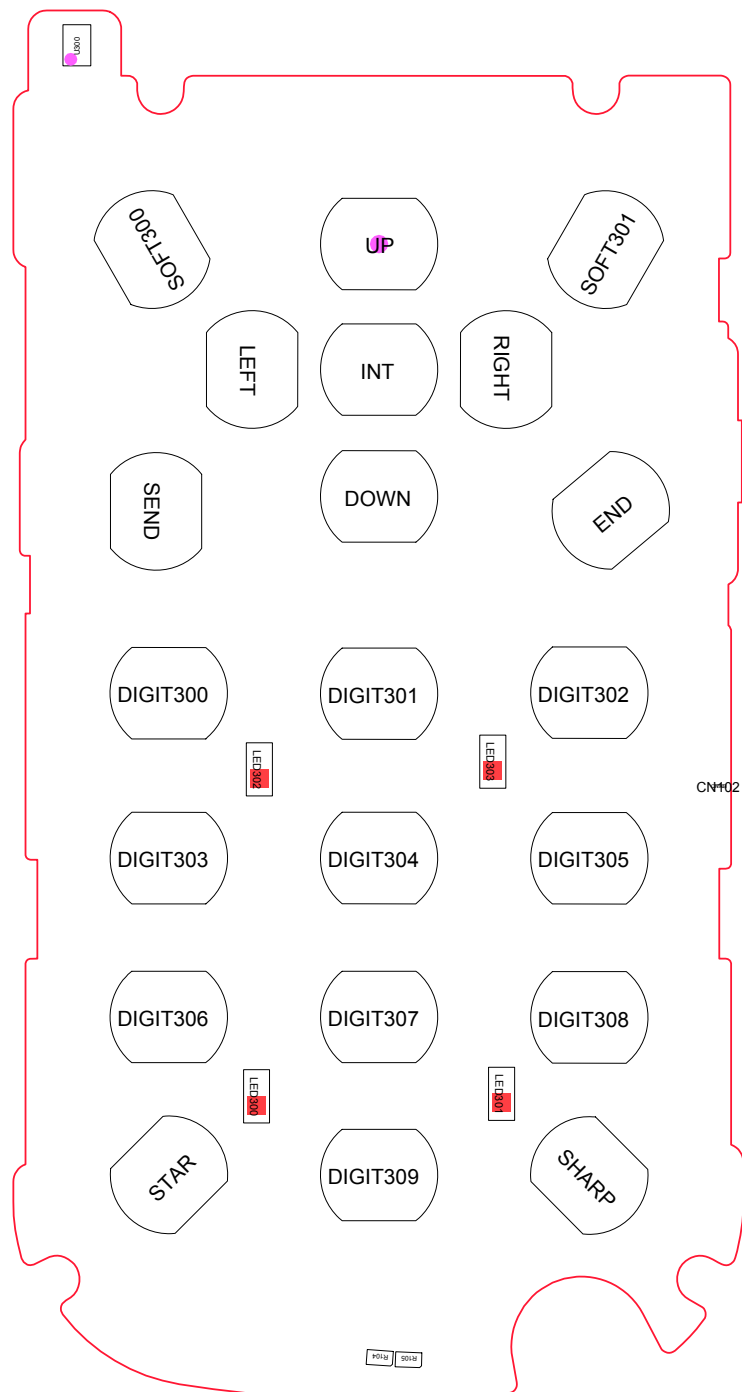


### 8-1. Block Diagram

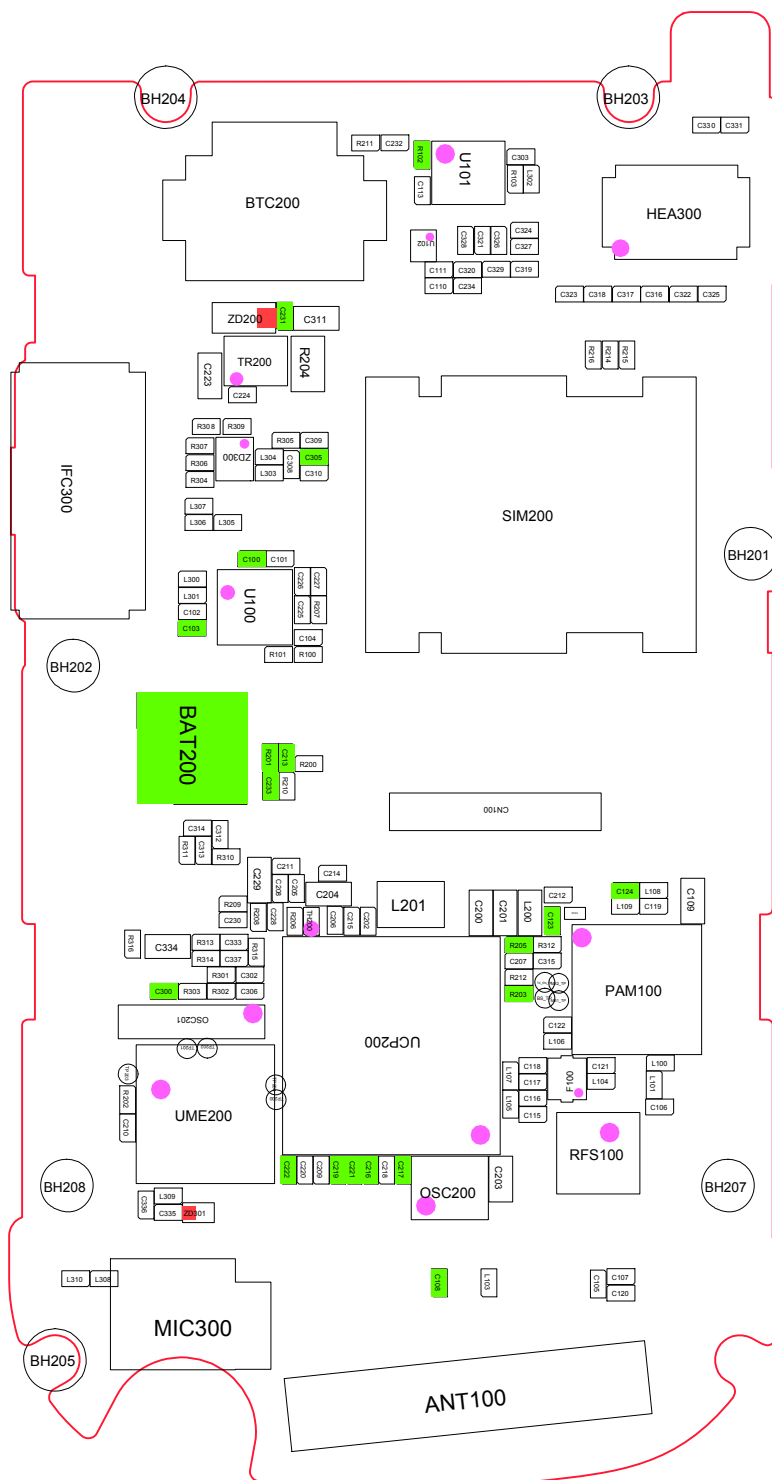


## 8-2. PCB Diagrams

### 8-2-1. Top



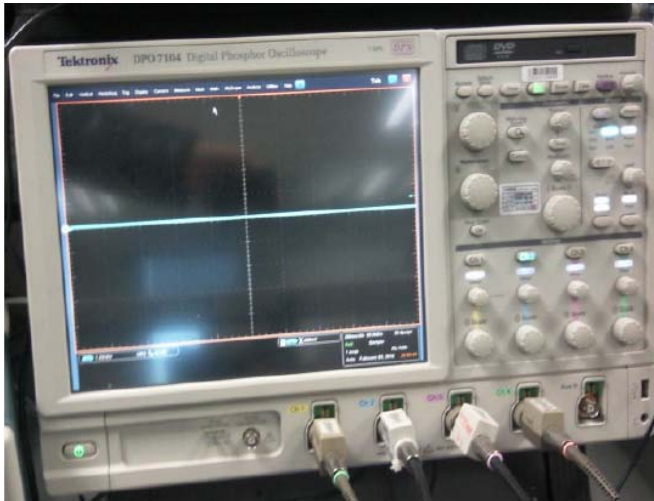
## 8-2-1. Bottom



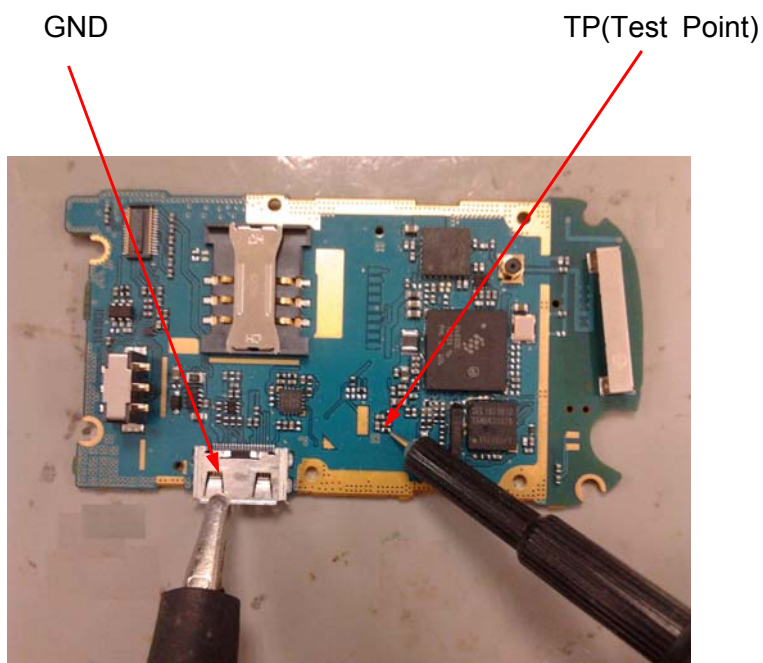
### 8-3. Flow Chart of Troubleshooting

※ presetting methods for checking TP

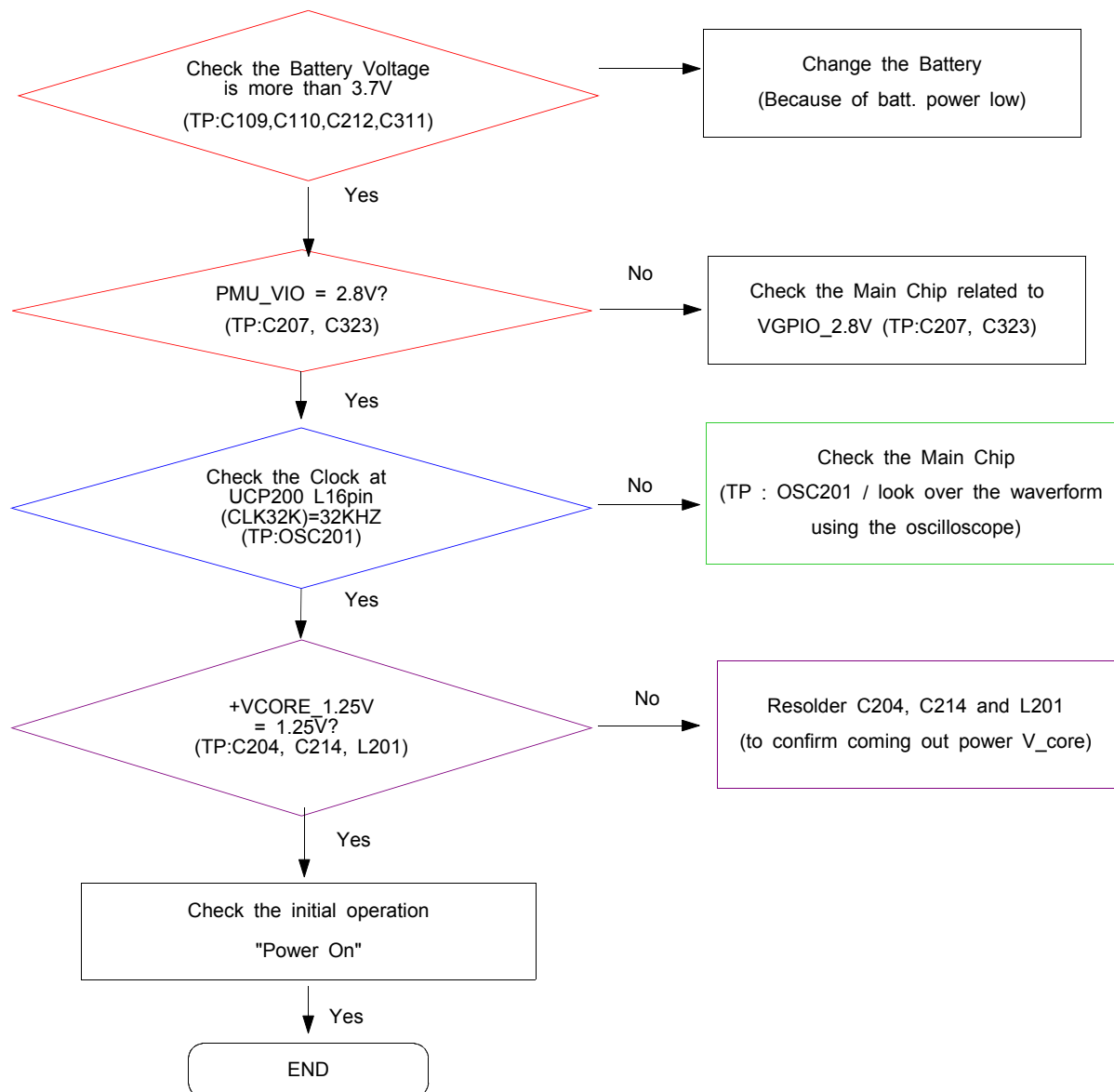
- GND & TP(exp. VBUS\_5.0V=C594~C599) using Oscilloscope
- look over the coming out signal.

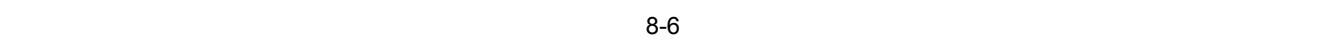


← Oscilloscope

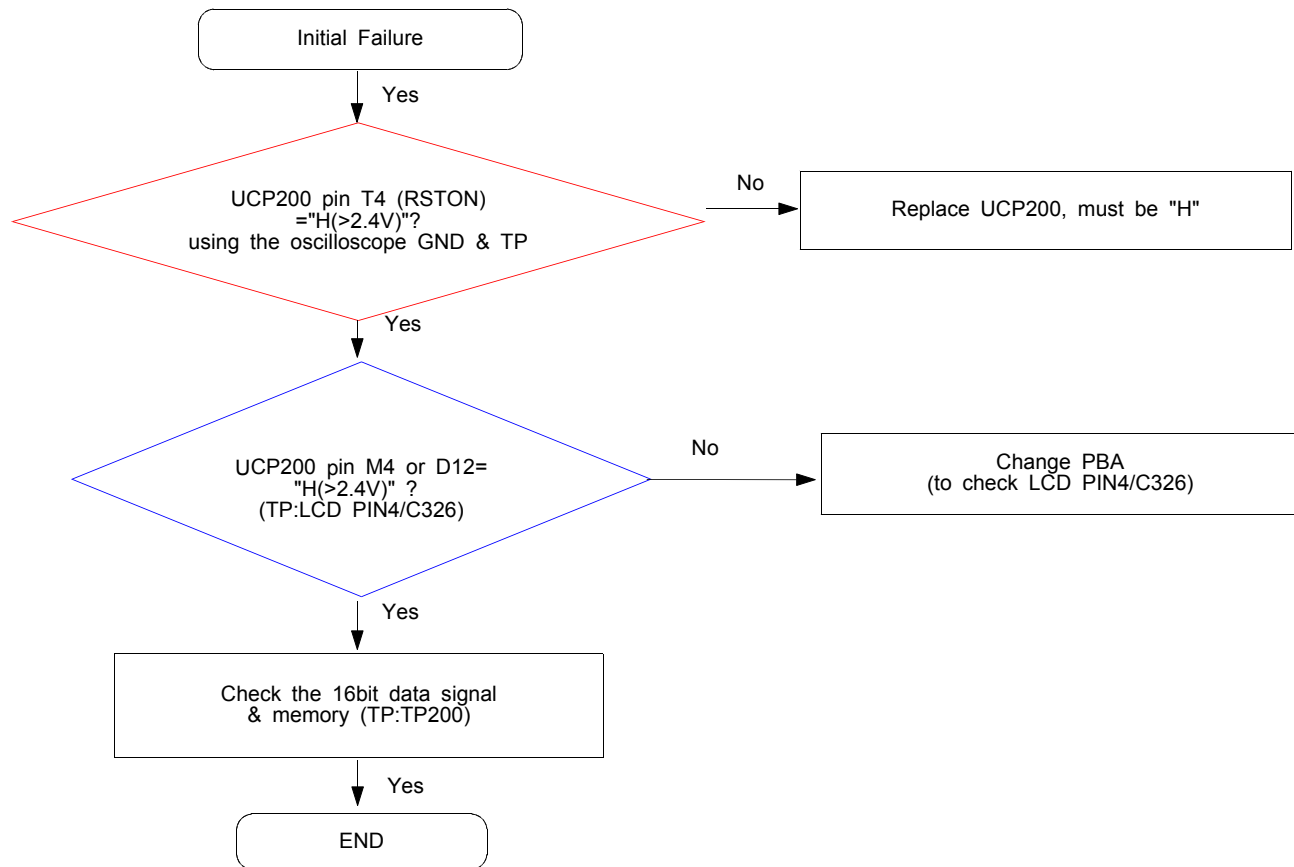


## 8-3-1. Power On

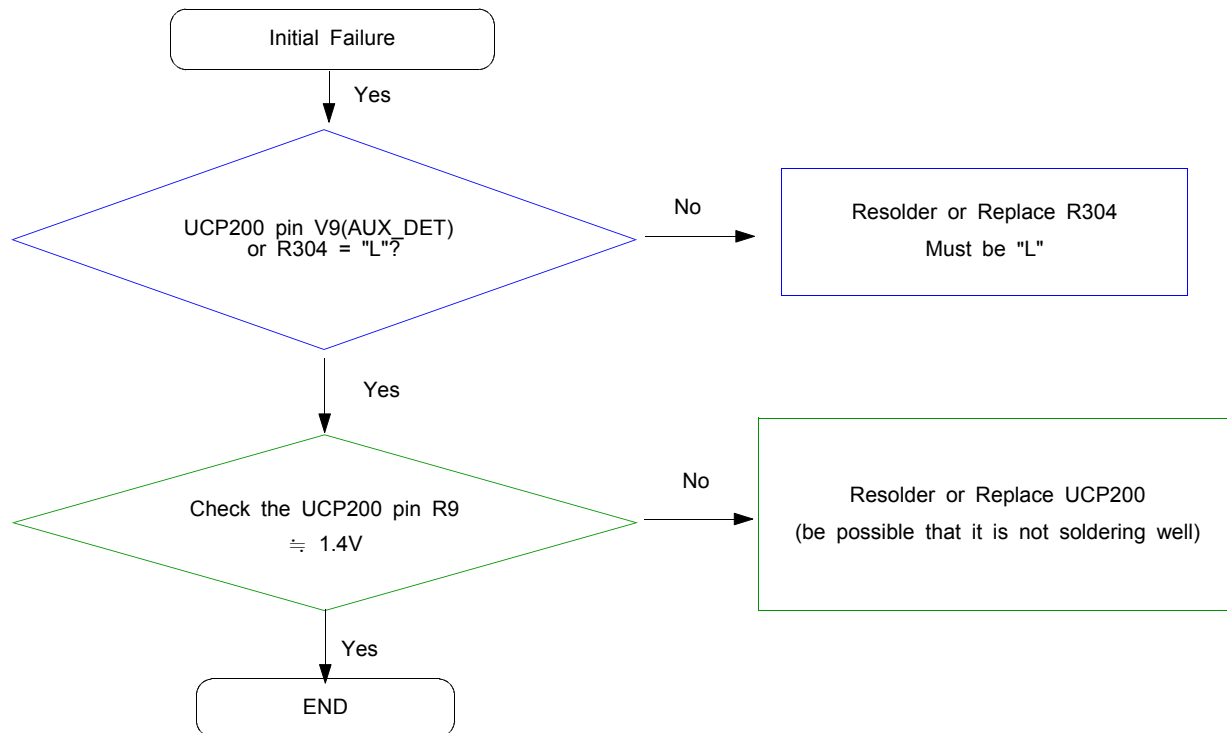




## 8-3-2. Initial

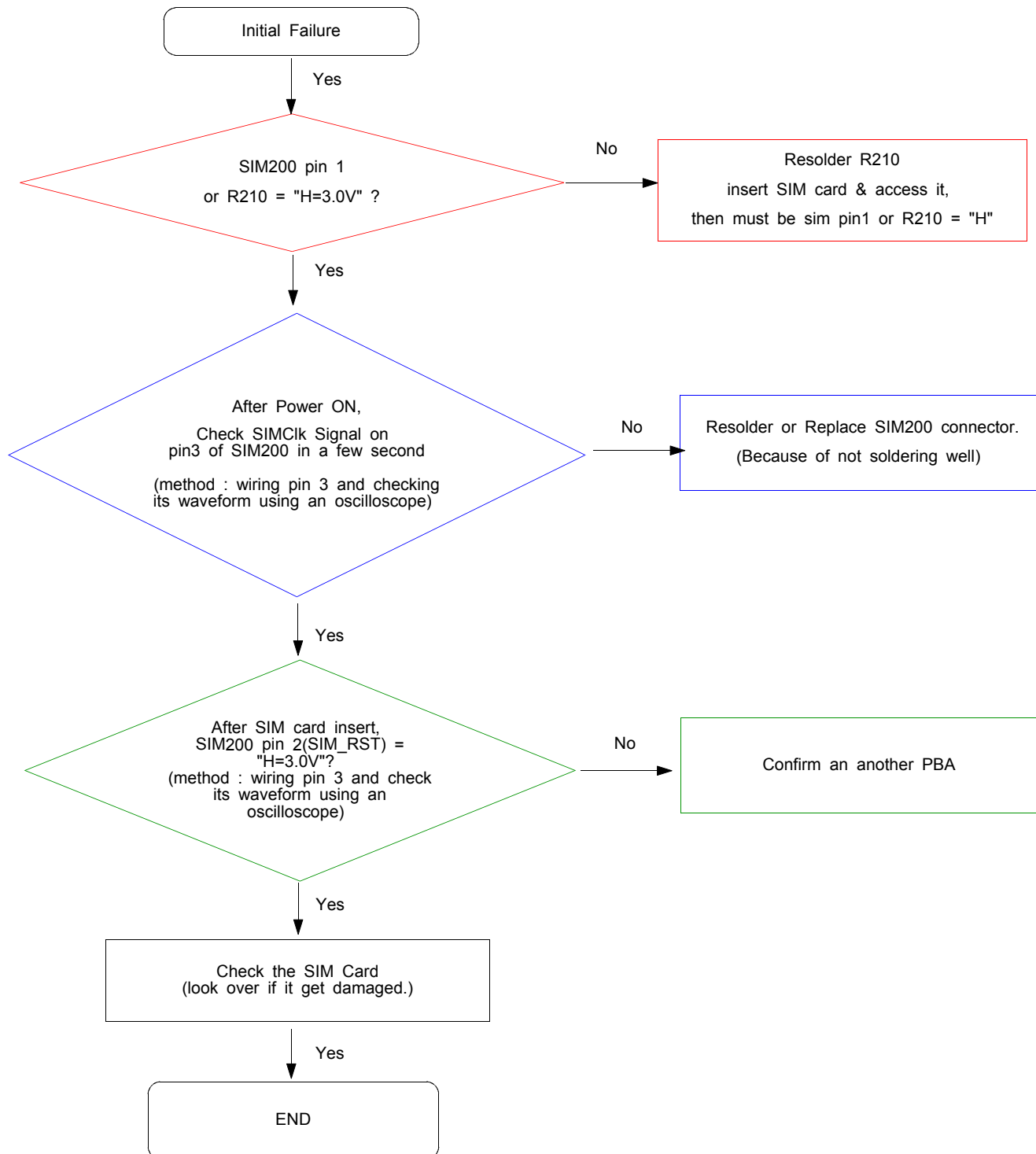


### 8-3-3. Charging Part

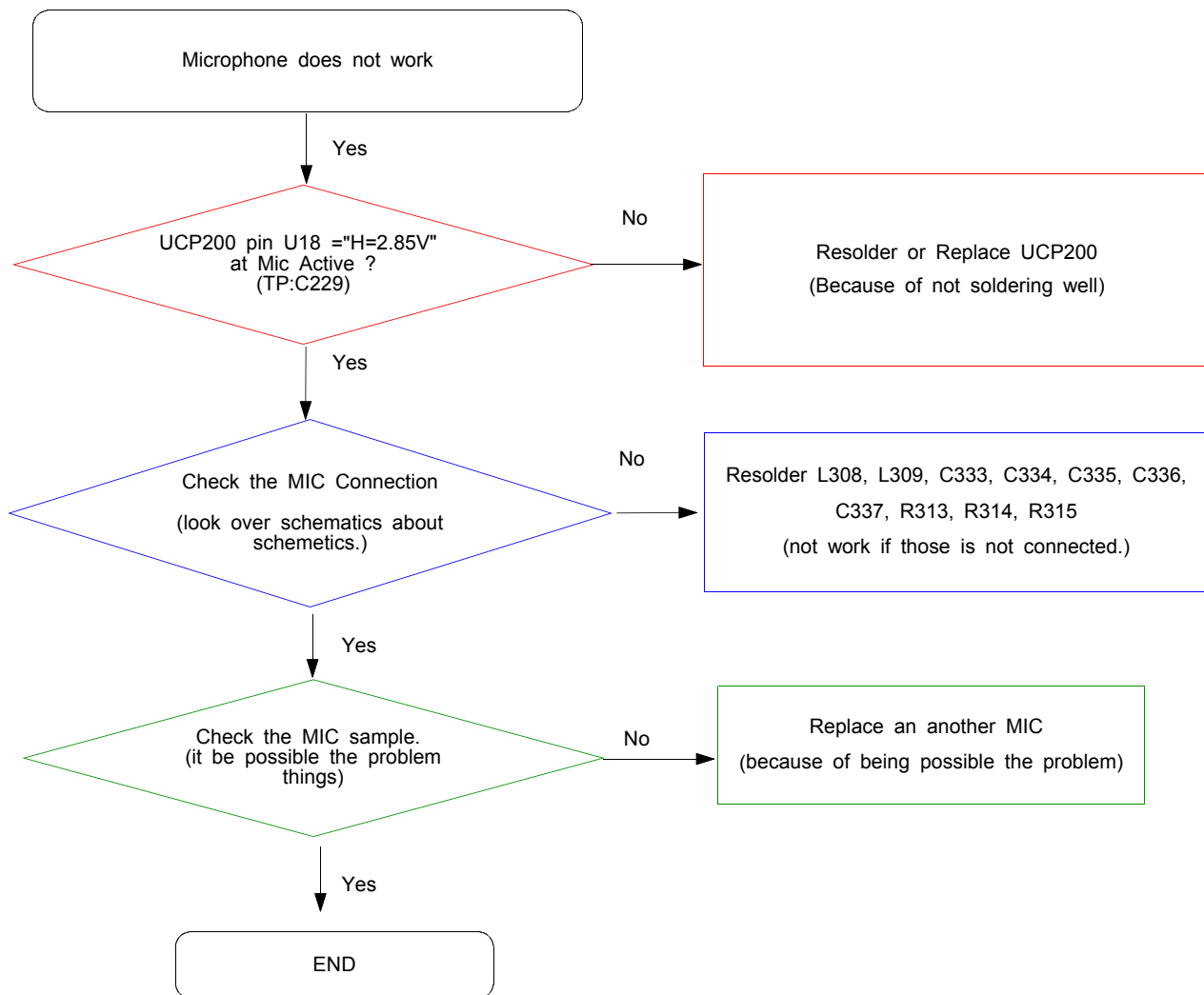


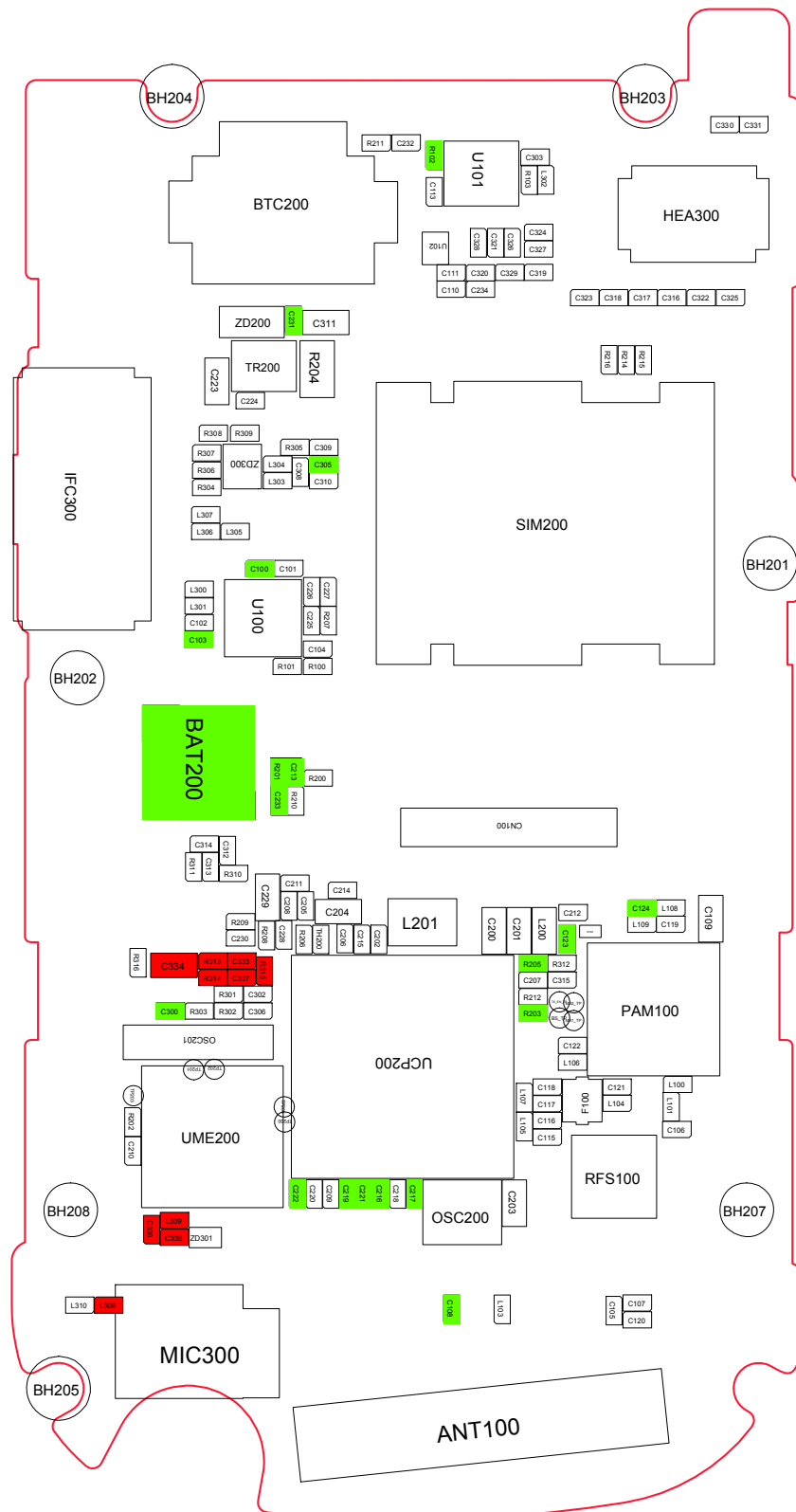


## 8-3-3. Sim Part

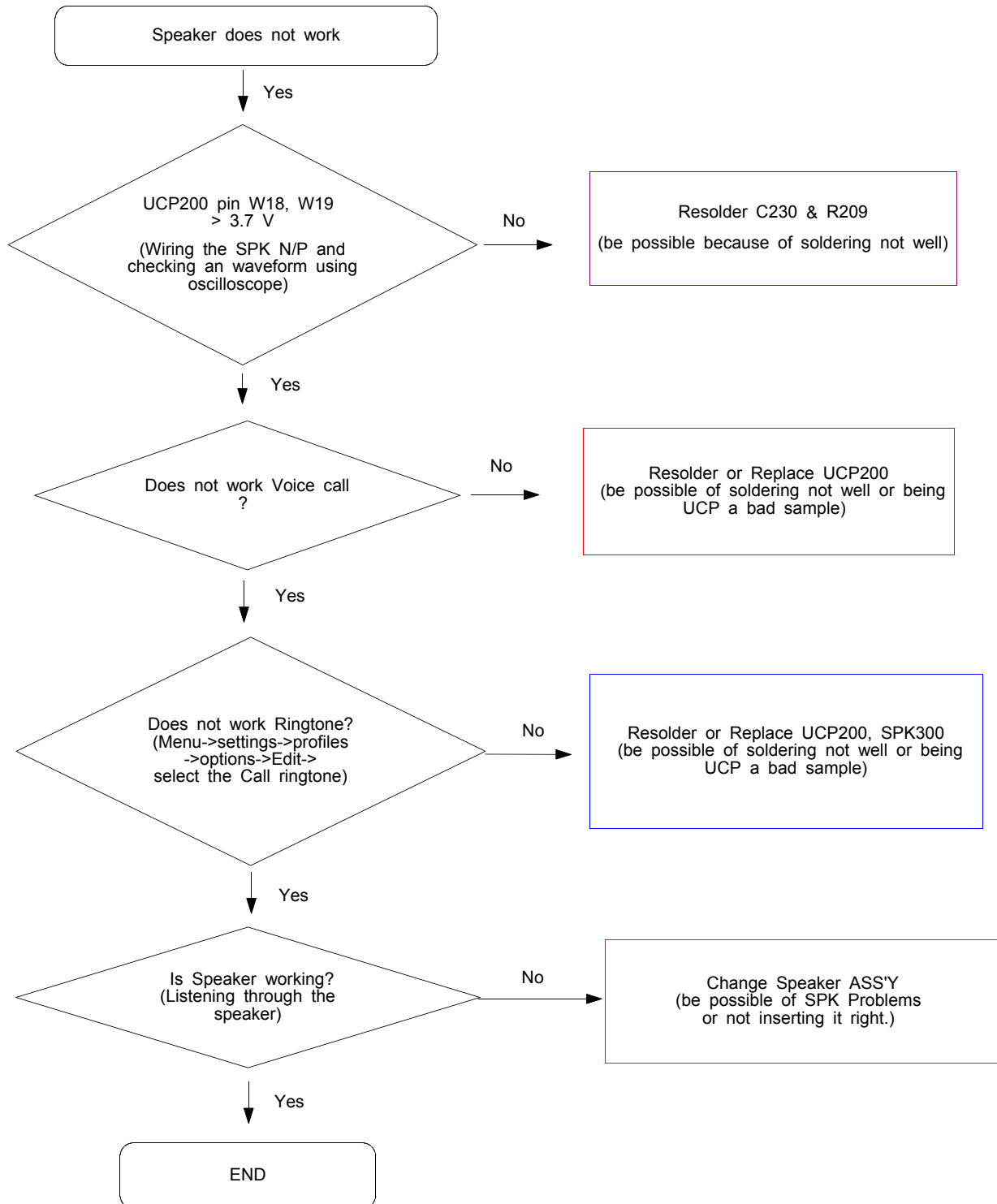


### 8-3-4. Microphone Part

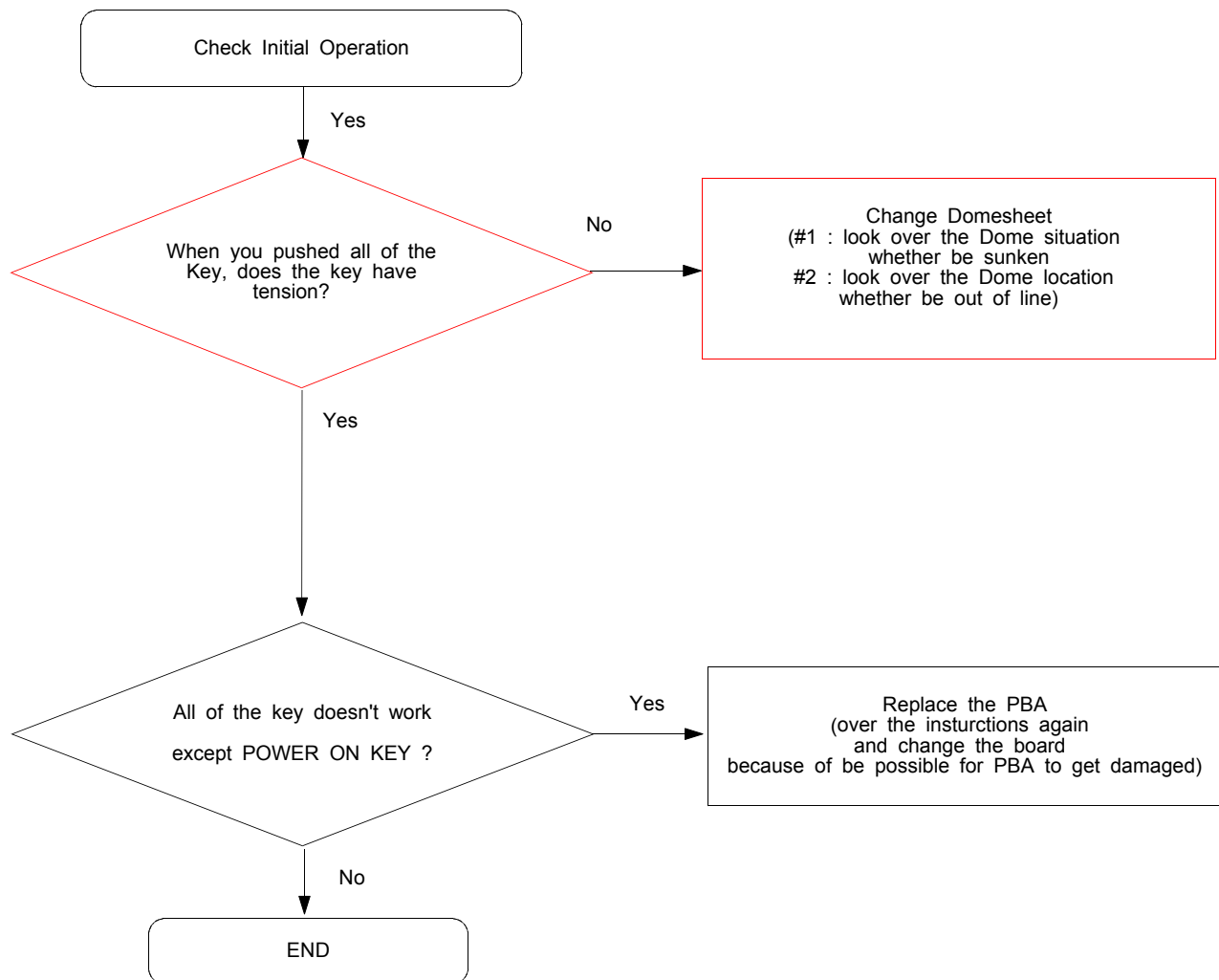




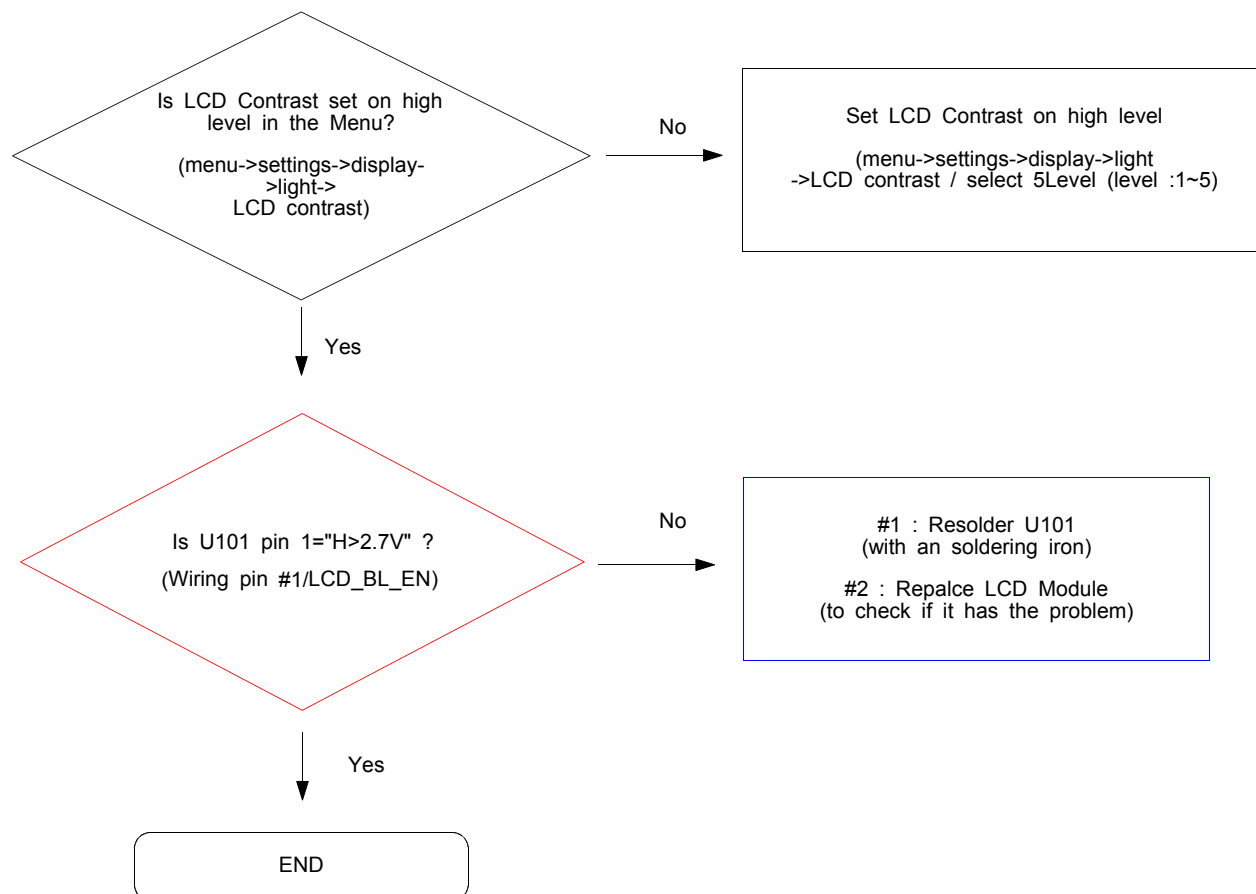
### 8-3-5. Speaker Part



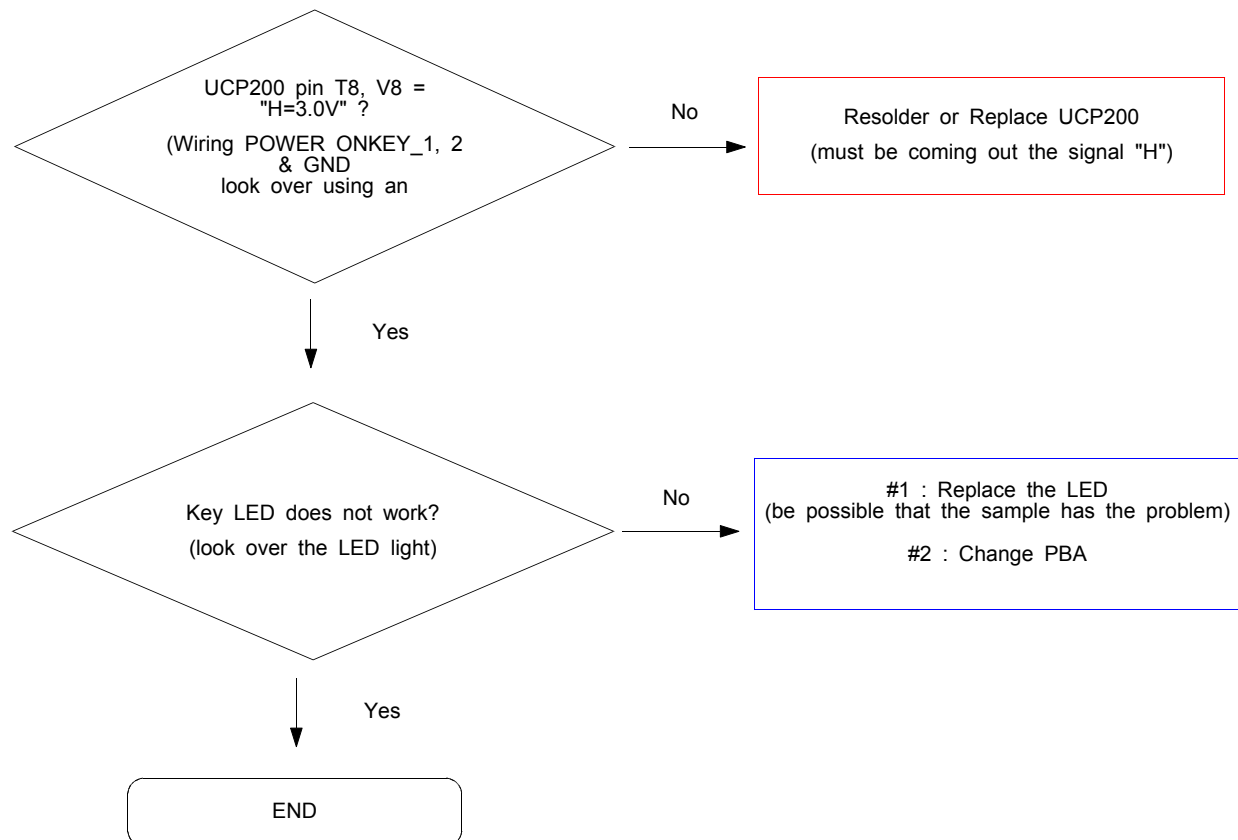
## 8-3-6. Key Data Input



### 8-3-7. Back Light (for Color Main LCD)



## 8-3-8. Key Back Light



## ※ presetting 8960

## (Rx setting)

Call Setup Screen			
Control	Call Setup		Call Params
Operating Mode	DUT Information		BCH Parameters
Active Cell	IMSI: 001010123456789	Multislot Class (GPRS): ----	
Connection Type	Called Num: 112	Multislot Class (EGPRS): ----	
Auto	Traffic Channel Downlink Power		TCH Parameters
	Burst 1, 2, 3, 4: ----, ----, ----, ---- dBm		
	Unused Bursts: ---- dBm		
Originate Call	Counters		POTCH Parameters
Paging IMSI	Page: 0	DUT IP Tx, Packets: ----	
001010123456789	PRACH: 0	Bytes: ----	
	Missing Burst: 0	DUT IP Rx, Packets: ----	
	Corrupt Burst: 0	Bytes: ----	
	Decode Error: 0		
Handover Setup	Error Reports		Receiver Control
Cell Info	Burst Timing Error: ---- T		
	BLER (Block Error Rate): ---- % over ---- blocks		
	USF BLER: ---- % over ---- blocks		
1 of 2	Active Cell	Sys Type: GPRS	
	Idle		
	Interfer Offset		

&lt; 8960장비 초기화면 &gt;

1. Active Cell  
: select GSM or GPRS
2. Connection Type  
: select Auto(GSM), BLER(GPRS)
3. BCH Parameter  
: select measuring band (DCS or EGSM)
4. Cell power  
: -60dBm

## (Tx setting)

Call Setup Screen			
Control	Call Setup		Call Params
Operating Mode	DUT Information for IMEI 010405000000000		BCH Parameters
Active Cell	IMSI: 001010123456789	Multislot Class (GPRS): ----	
Connection Type	Called Num: 112	Multislot Class (EGPRS): ----	
Auto	Traffic Channel Downlink Power		TCH Parameters
	Burst 1, 2, 3, 4: -60.00, ----, ----, ---- dBm		
	Unused Bursts: ---- dBm		
End Call	Counters		POTCH Parameters
	Page: 2	DUT IP Tx, Packets: ----	
	PRACH: 1	Bytes: ----	
Paging IMSI	Missing Burst: 0	DUT IP Rx, Packets: ----	
001010123456789	Corrupt Burst: 0	Bytes: ----	
	Decode Error: 0		
Handover Setup	Error Reports		Receiver Control
Cell Info	Burst Timing Error: 0.50 T		
	BLER (Block Error Rate): ---- % over ---- blocks		
	USF BLER: ---- % over ---- blocks		
1 of 2	Active Cell	Sys Type: GSM	
	Connected		
	Interfer Offset		

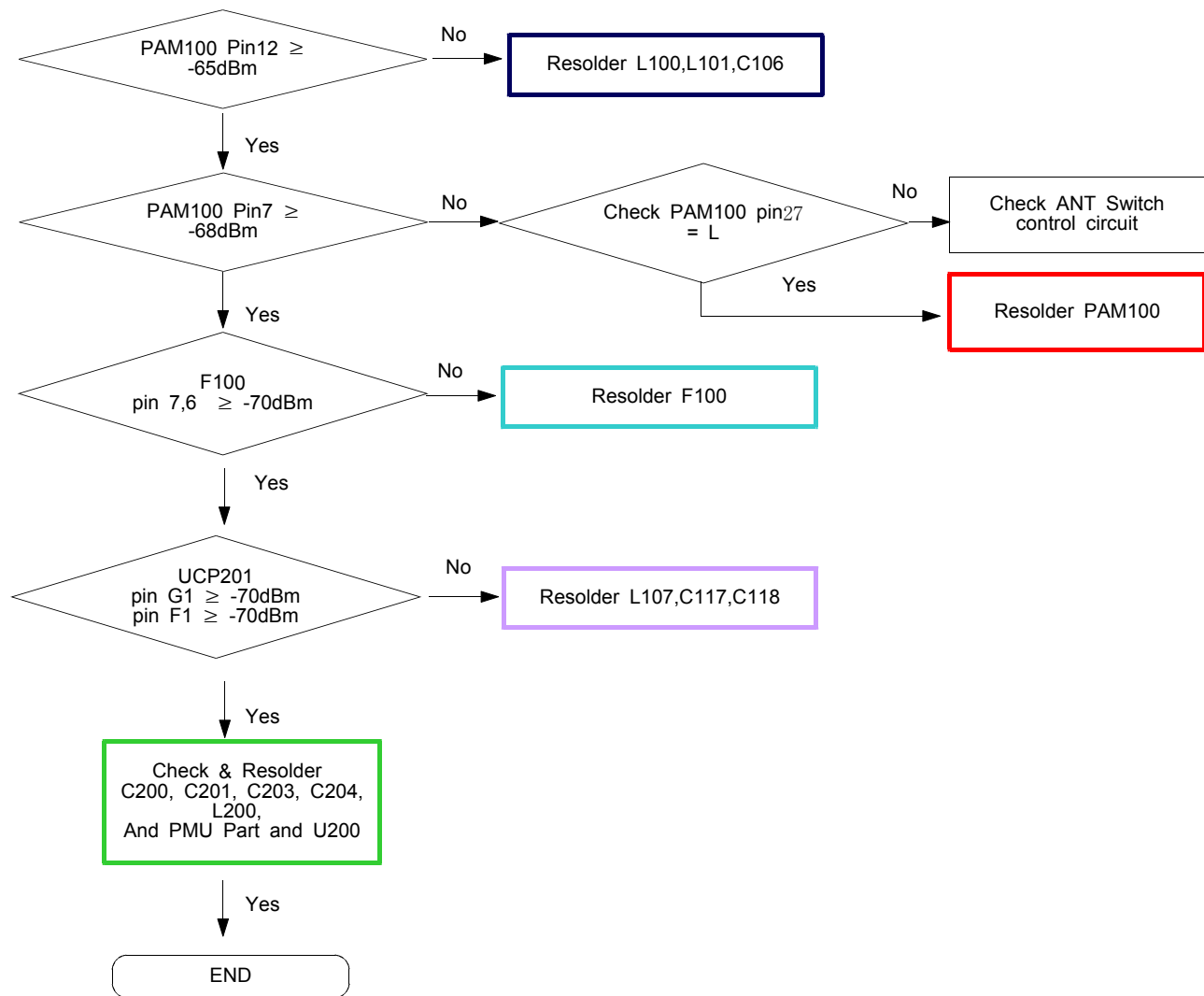
&lt; Call이 연결된 화면 &gt;

※ After setting 8960 ( EGSM / DCS )

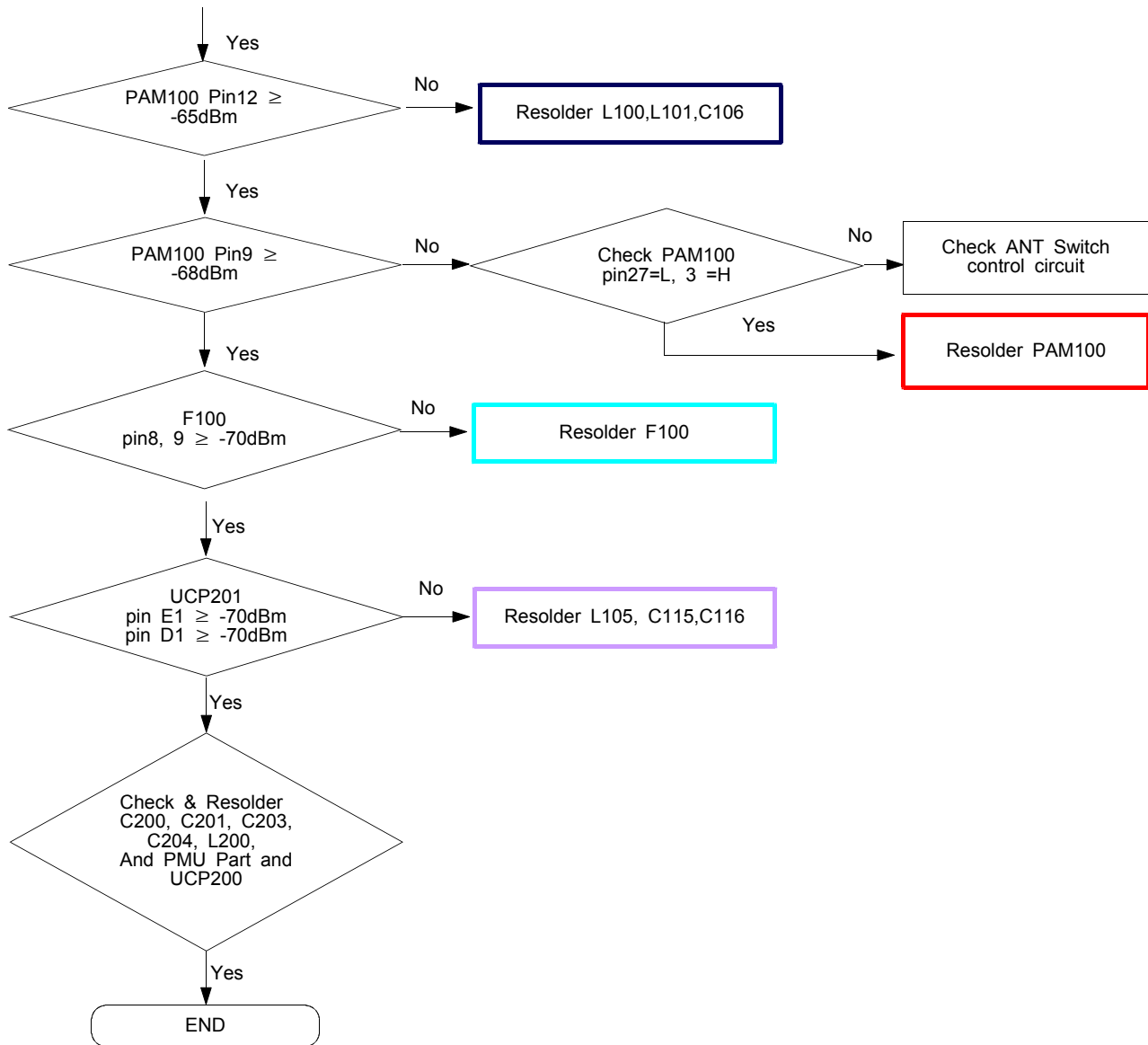
1. After setting, prepare the call setup Display
2. Using an Originate Call, make a call.
3. Confirm the display "connected"
4. start the measuring



## 8-3-2. GSM900 Receiver

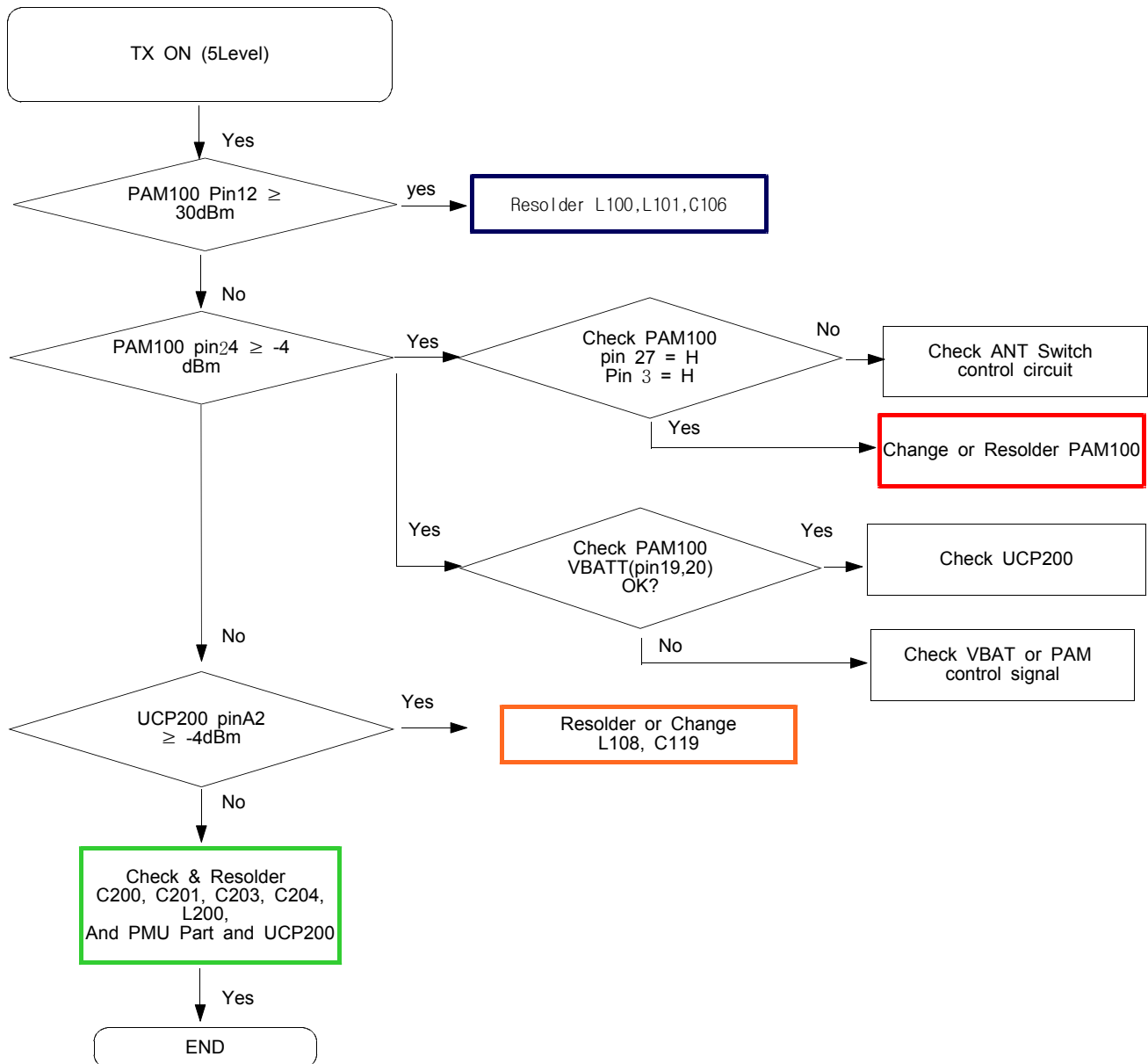


### 8-3-2. DCS Receiver

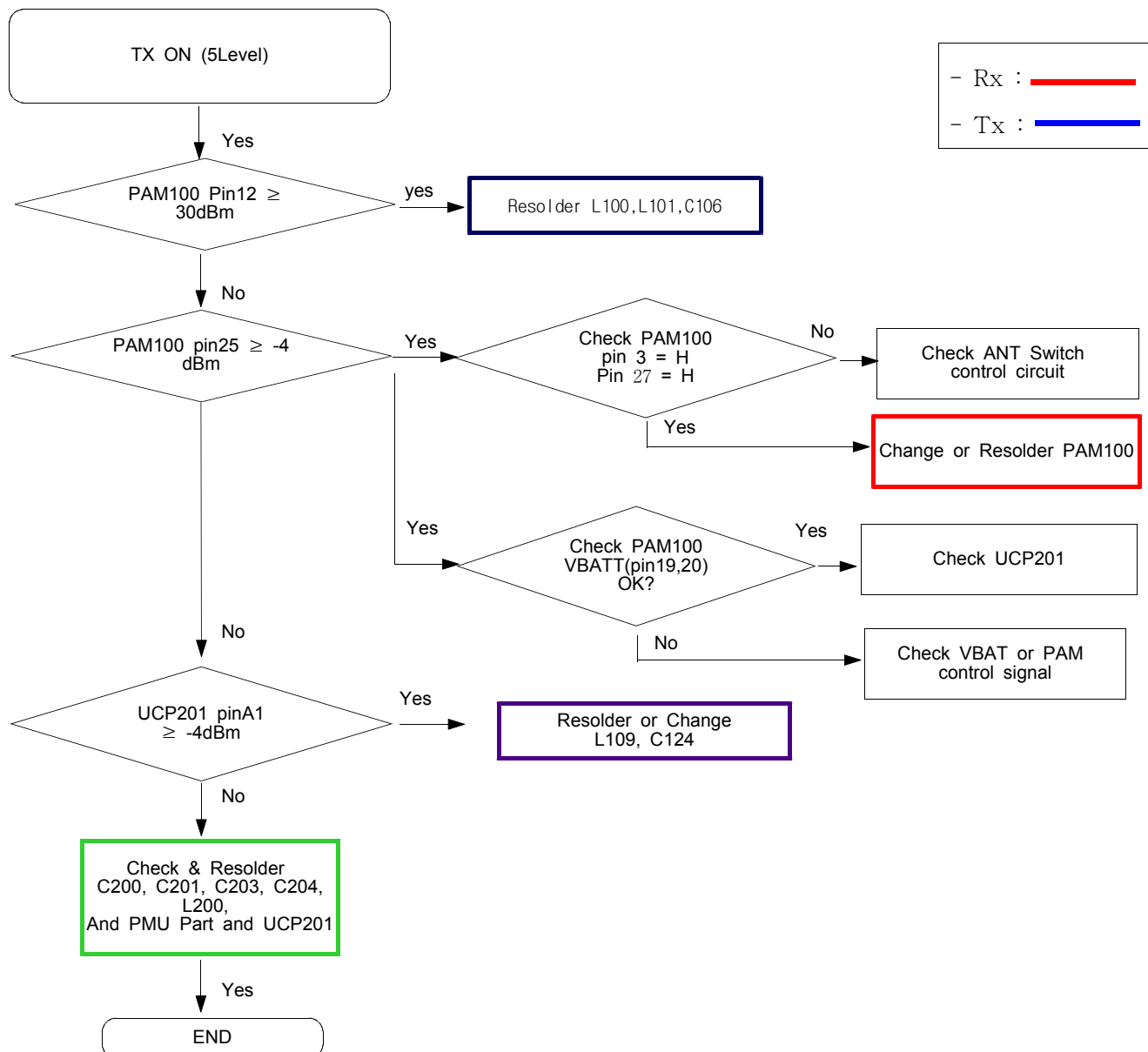


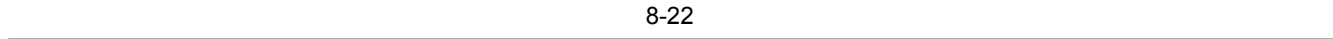


### 8-3-2. GSM900 Transmitter



## 8-3-2. DCS Transmitter





## 8-4. Service Schematics

**- NC Point(Top View)**

● : NC

UCP200

	1	2	3	4	5	6	7	8	9	10	11	12	13	14	15	16	17	18	19	
A	○	○	○	○	○	○	○	○	○	●	○	○	○	○	○	○	○	○	○	A
B	●	○	○	○	○	○	○	○	○	●	○	○	○	○	○	○	○	○	○	B
C	●	○																○	○	C
D	○	○		○	○	○	○	○	●	●	○	○	●	○	○	○		○	○	D
E	○	○		○	○	○	○	○	●	●	●	○	○	○	○	●		○	○	E
F	○	○		○	○										○	●		○	○	F
G	○	○		○	○		○	○	○	○	●	●	○		○	○		○	○	G
H	○	○		○	○		○	○	○	○	○	○	○		○	●		○	○	H
J	○	●		○	○		○	○	○	○	○	○	○		○	○		●	●	J
K	○	○		○	○		○	○	○	○	○	○	○		○	○		○	○	K
L	○	○		○	○		○	○	○	○	○	○	○		●	○		○	○	L
M	○	○		○	○		○	○	○	○	○	○	●		○	○		○	○	M
N	○	○		○	○		○	○	○	○	○	○	○		○	●		●	○	N
P	○	○		○	○										○	○		○	○	P
R	●	○		●	○	○	●	○	○	○	○	○	○	○	○	○		○	○	R
T	●	●		○	●	●	●	○	○	○	○	○	○	○	○	○		○	○	T
U	○	○																○	○	U
V	○	●	●	●	○	○	○	○	○	○	○	○	○	○	○	○	○	○	○	V
W	○	●	●	●	○	○	●	○	○	○	○	○	○	○	○	○	○	○	○	W
	1	2	3	4	5	6	7	8	9	10	11	12	13	14	15	16	17	18	19	

● : NC

UME200

	1	2	3	4	5	6	7	8	9	10	
A	●	●			○	○			●	●	A
B	○	●	○	○	○	○	○	○	○	●	B
C	○	○	○	○	●	○	○	○	○	○	C
D	○	○	○	○	○	○	○	○	○	○	D
E	○	○	○	○	○	○	○	○	○	○	E
F	●	○			○	○			●	●	F
	1	2	3	4	5	6	7	8	9	10	