


lenovo

Lenovo S856

Quick Start Guide v1.0

 Read this guide carefully before using your smartphone.

Technical specifications



Model and system

Model: Lenovo S856

System: Android



Dimensions and weight

Height: 151 mm (5.94 inches)

Width: 77.8 mm (3.07 inches)

Depth: 8.95 mm (0.35 inch)

Weight: 175.5 g (0.39 lb)



Processor

Processor: MSM8926, Quad Core, 1.2 GHz



Camera

Type: CMOS

Pixels: 8.0 megapixels (back) + 1.6 megapixels (front)



Battery

Battery: 2500 mAh



Display

Size: 5.5 inches

Screen: multi-touch

Resolution: 1280 × 720 pixels

LCD type: IPS



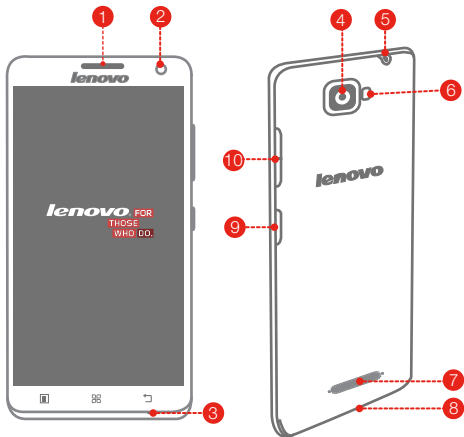
Wireless Communication

Bluetooth 4.0; WLAN 802.11 b/g/n; LTE FDD, WCDMA, GSM; GPS



① Depending on the measuring method, the dimensions and weight might vary slightly.

First glance



1 Receiver

2 Front camera

3 Microphone

4 Rear camera

5 Headset connector

6 Flashlight

7 Speaker

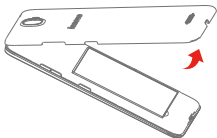
8 Micro USB connector

9 On/Off button

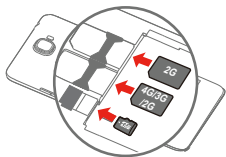
10 Volume buttons

Preparing your smartphone

You must insert the SIM card provided by your carrier to use cellular services. Set up your smartphone as shown.

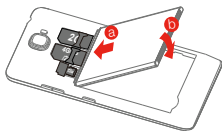


Step 1. Open the back cover.



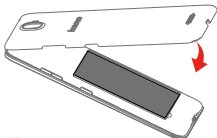
Step 2. Insert the SIM cards and the memory card.

Tip: Insert the (U)SIM card into SIM1 slot and SIM card into SIM2 slot.



Step 3. Install the battery.

- Align the battery connectors on the battery with the pins in the battery compartment.
- Push the battery down into place.

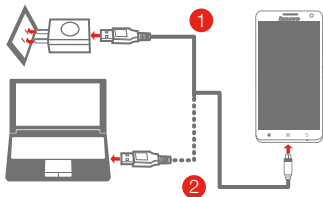


Step 4. Install the back cover.

Always turn off your smartphone first before you insert or remove a SIM card. Insert or remove a SIM card with your smartphone on may damage your SIM card or smartphone permanently.

Charging the battery


Charge the battery as shown.



Method 1. Connect your smartphone to a power outlet using the cable and USB power adapter that come with your smartphone.

Method 2. Connect your smartphone to a computer using the cable that comes with your smartphone.

 Low battery power

 Fully charged

 Charging

Turning on or turning off your smartphone



Turn on: Press and hold the On/Off button until the Lenovo logo appears.

Turn off: Press and hold the On/Off button for a few seconds, then tap **Power off**.

Restart: Press and hold the On/Off button for about 10 seconds.

 Your smartphone has a rechargeable battery. For more information about battery safety, see the “Rechargeable battery notice” in the **Important Product Information Guide** shipped with your smartphone.

Learning more

To learn more information about your Lenovo smartphone and obtain the latest smartphone manuals, go to:
<http://support.lenovo.com/>.

Getting support

For support on network service and billing, contact your wireless network operator. For instructions on how to use your device, go to: <http://support.lenovo.com/>.

European Union conformity



Radio and Telecommunications Terminal Equipment Directive

This product is in compliance with the essential requirements and other relevant provisions of the Radio and Telecommunications Terminal Equipment Directive, 1999/5/EC.

Legal notices

Lenovo and the Lenovo logo are trademarks of Lenovo in the United States, other countries, or both.

Other company, product, or service names may be trademarks or service marks of others.

First Edition (August 2014) © Copyright Lenovo 2014.

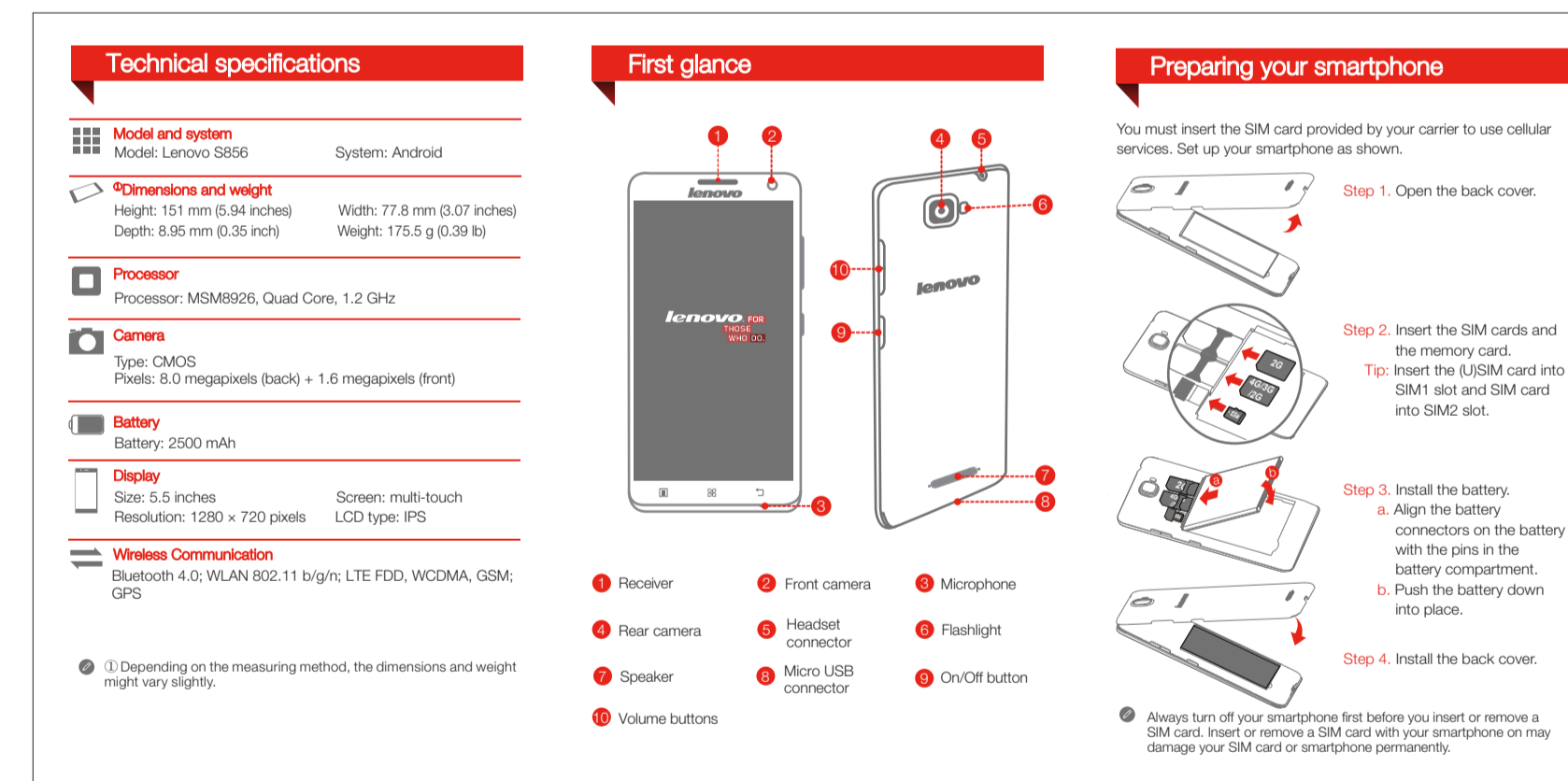
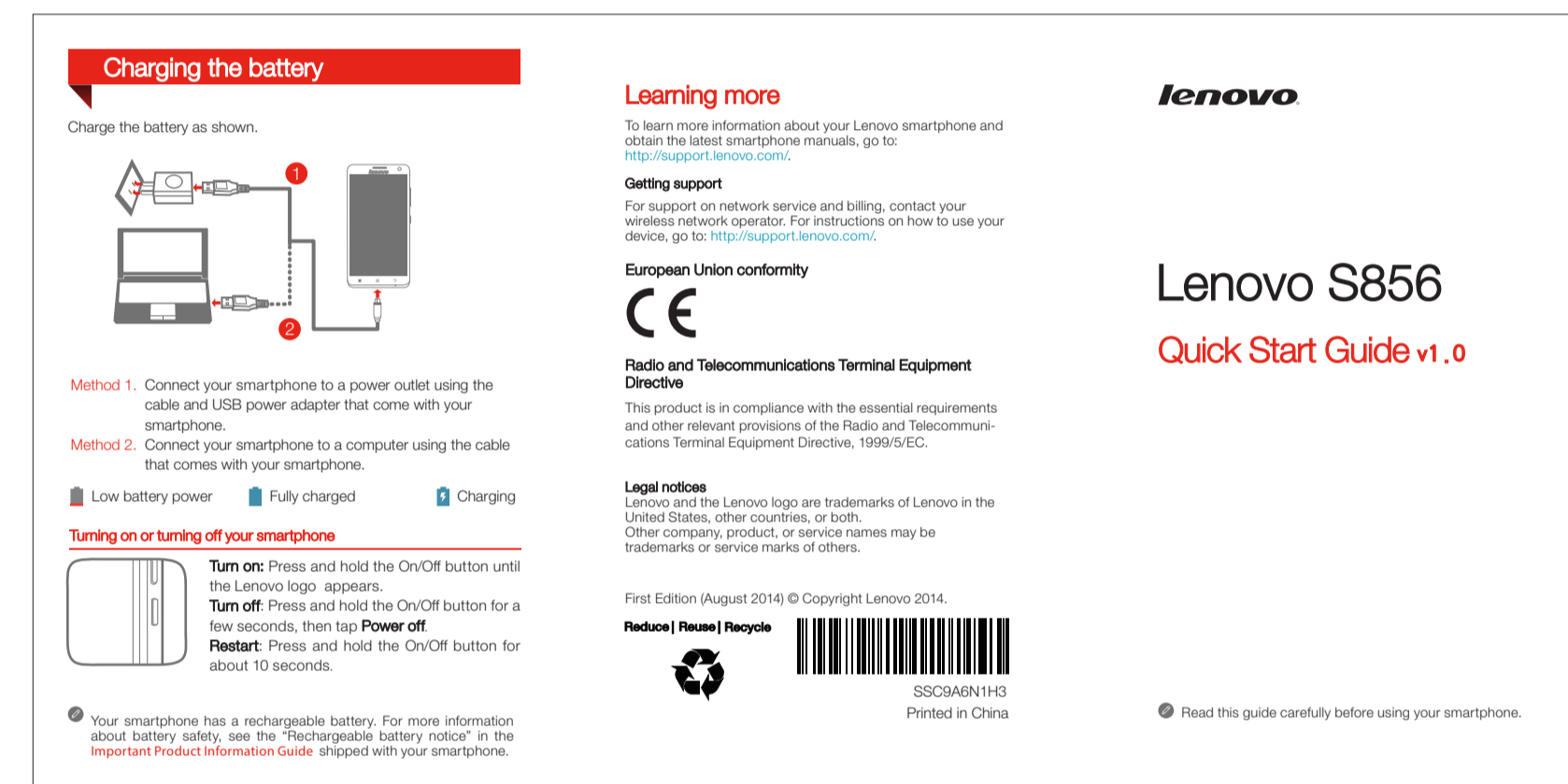
Reduce | Reuse | Recycle



SSC9A6N1H3
Printed in China

NOTES:

- 1、英文字体: Helvetica Neun LT Std (45light)
中文字体: 汉仪中黑简体
- 2、模板中的“X”为可变量, 需要以实际数据及信息为准
- 3、“First glance” & “Prepare your phone” & “Charging the battery” 三章中的描述以及图片需要以实际为准
- 4、编辑文字时, 请不要移动或者改变原本的文字框的位置。
- 5、保证封面标识Lenovo Logo、产品名称, 封底标识条码和料号。



pantone 424c

pantone 485c

pantone 484c

Designer	Luohongwei			Release	20131107		
PROJECT NAME	Lenovo XXXXX	MATERIAL	105G哑粉	FOLD	荷包折	Colour	
PART NAME	Quick Start Guide(110x74)	PROCESS	Cut	SURFACE	覆亚油	CMYK	
PART NUMBER	XXXXXXXXXX	SIZE	110x74(Close)		110x222(Open)	pantone 485c	Unit:mm