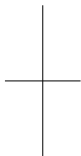




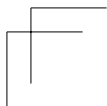
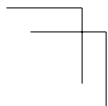
**lenovo**

# Lenovo A328

Quick Start Guide v1.0



📖 Read this guide carefully before using your smartphone.





## Technical specifications



### Model and system

Model: Lenovo A328

System: Android



### Dimensions and weight

Height: 132 mm (5.2 inches)

Width: 68.5 mm (2.69 inches)

Depth: 10.8 mm (0.425 inch)

Weight: 140 g (0.328 lb)



### Processor

Processor: MTK MT6582M , Quad Core, 1.3GHz



### Camera

Type: CMOS

Pixels: 5.0 megapixels (back) + 2.0 megapixels (front)



### Battery

Battery: 2000 mAh



### Display

Size: 4.5 inches

Screen: 2-touch

Resolution: 854 × 480 pixels

LCD type: TN



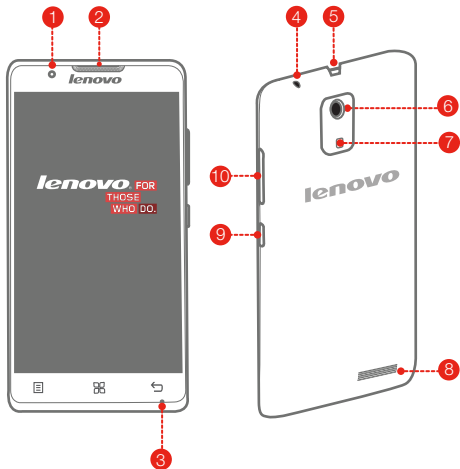
### Wireless Communication

Bluetooth 4.0; WLAN 802.11 b/g/n; WCDMA, GSM; GPS



① Depending on the measuring method, the dimensions and weight might vary slightly.

## First glance



- |                       |                       |                      |
|-----------------------|-----------------------|----------------------|
| 1 Front-facing camera | 2 Receiver            | 3 Microphone         |
| 4 Headset connector   | 5 Micro USB connector | 6 Rear-facing camera |
| 7 Flashlight          | 8 Speaker             | 9 On/Off button      |
| 10 Volume buttons     |                       |                      |

## Preparing your smartphone

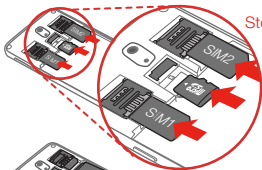
You must insert the SIM card provided by your carrier to use cellular services. Set up your smartphone as shown.

**Step 1.** Open the back cover.



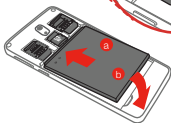
**Step 2.** Insert the SIM cards and the memory card.

**Tip:** Insert the (U)SIM card into SIM1 slot and SIM card into SIM2 slot.



**Step 3.** Install the battery.

- Align the battery connectors on the battery with the pins in the battery compartment.
- Push the battery down into place.



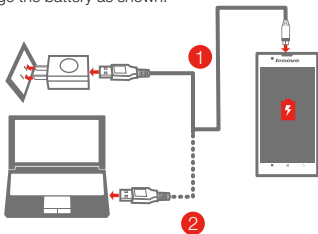
**Step 4.** Install the back cover.



- Always turn off your smartphone first before you insert or remove a SIM card. Insert or remove a SIM card with your smartphone on may damage your SIM card or smartphone permanently.

## Charging the battery


Charge the battery as shown.



**Method 1.** Connect your smartphone to a power outlet using the cable and USB power adapter that come with your smartphone.

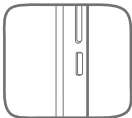
**Method 2.** Connect your smartphone to a computer using the cable that comes with your smartphone.

 Low battery power

 Fully charged

 Charging

### Turning on or turning off your smartphone



**Turn on:** Press and hold the On/Off button until the Lenovo logo appears.

**Turn off:** Press and hold the On/Off button for a few seconds, then tap **Power off**.

**Restart:** Press and hold the On/Off button for a few seconds, then tap **Restart**.

 Your smartphone has a rechargeable battery. For more information about battery safety, see the "Rechargeable battery notice" in the [Important Product Information Guide](#) shipped with your smartphone.



## Learning more

To learn more information about your Lenovo smartphone and obtain the latest smartphone manuals, go to:  
<http://support.lenovo.com/>.

### Getting support

For support on network service and billing, contact your wireless network operator. For instructions on how to use your device, go to: <http://support.lenovo.com/>.

### European Union conformity



### Radio and Telecommunications Terminal Equipment Directive

This product is in compliance with the essential requirements and other relevant provisions of the Radio and Telecommunications Terminal Equipment Directive, 1999/5/EC.

### Legal notices

Lenovo and the Lenovo logo are trademarks of Lenovo in the United States, other countries, or both.  
Other company, product, or service names may be trademarks or service marks of others.

First Edition (August 2014) © Copyright Lenovo 2014.

**Reduce | Reuse | Recycle**



HQ6011132000

Printed in China