

# **Lenovo X2**

# **Service Manual**

LENOVO

# Contents

1.	How to assemble and disassemble LENOVO X2.....	3
1.1	The phone disassemble guide.....	3
1.2	The phone assemble guide.....	6
2.	Main board and Sub FPC layout introduction.....	7
2.1	Main board top view.....	7
2.2	Main board bottom view.....	8
2.3	Sub board top view.....	8
2.4	Sub board bottom view.....	9
3.	Troubleshooting Procedure.....	10
3.1	No boot.....	10
3.2	Touch panel have no effect.....	11
3.3	Charging anomaly.....	12
3.4	Calling receiver sound has poor quality.....	14
3.5	Speaker has no sound.....	15
3.6	LCD has no display.....	16
3.7	Phone crash.....	18
3.8	Key has no effect.....	19
3.9	Communication signal abnormality.....	20
3.10	Calling receiver has no sound.....	21
3.11	Microphone has no effect.....	22
3.12	Display color distortion.....	23
3.13	Speaker tone distortion.....	24
3.14	Speaker tone smaller.....	25
3.15	No charging.....	26
3.16	Camera has no effect.....	27
3.17	Auto shutdown.....	29
3.18	SIM Card has not be detected.....	30

# 1.How to assemble and disassemble LENOVO X2

## 1.1 The phone disassemble guide

- 1) Take out the sim-tray



- 2) Disassemble the bottom of decoration

Use tweezers from the top of decoration and the battery cover gap (the back right side with the red spot mentioned below), released the hooks remove the decoration.



- 3) Disassemble the rear housing assemble

Note: 1, The solid red dots are hooks position

2, Disassemble tools: Tweezer、Disassemble bar; in order to protect the cover from destroy ,the disassemble bar insert just about 2mm

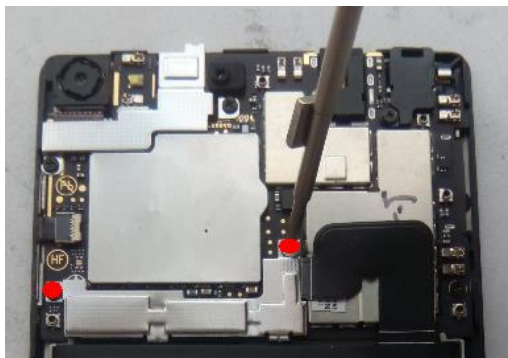


Using the disassemble bar to pry hooks

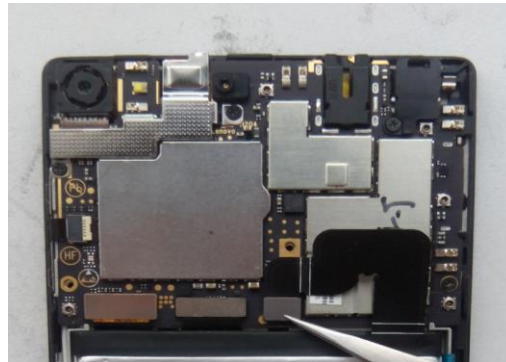
Released the hook1 from the lower left corner . The direction of from bottom to top to released the hooks



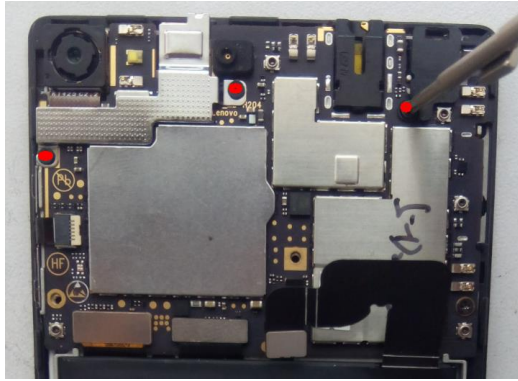
4) Disassemble the main board



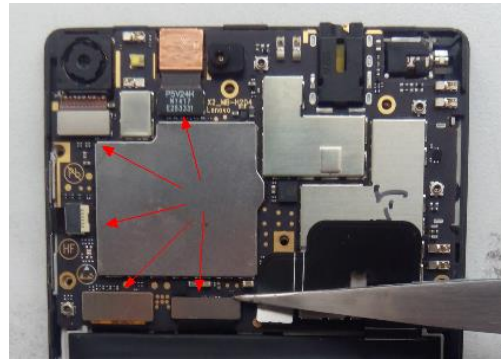
Disassemble the battery connector pressure sheet steel, 2 screws



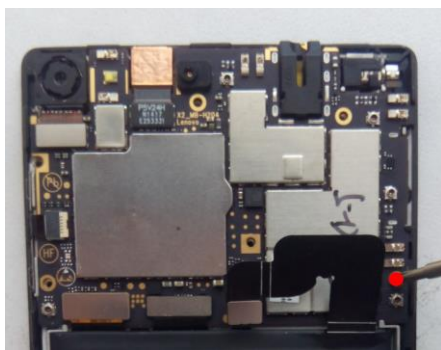
Release the battery connector



Release brackets

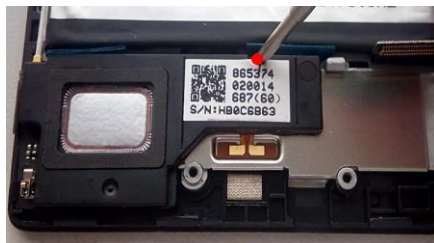


Release the TP connector , LCD connector and main FPC

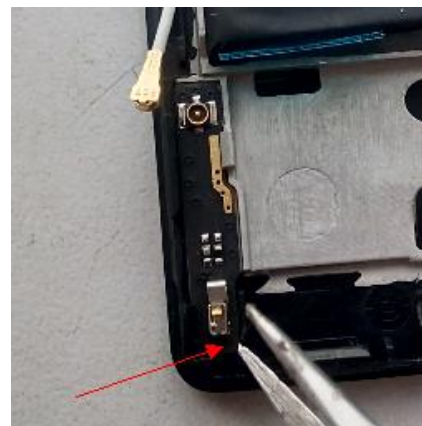


Remove screws as the solid red dots position

5) Disassemble the sub board



Remove the SPK BOX , 3 screws red arrow board



Remove the RF cable connector from sub

Remove the sub board slowly, pay attention to protect the shrapnel and the hook ( The solid red

dots location)

6) Disassemble battery



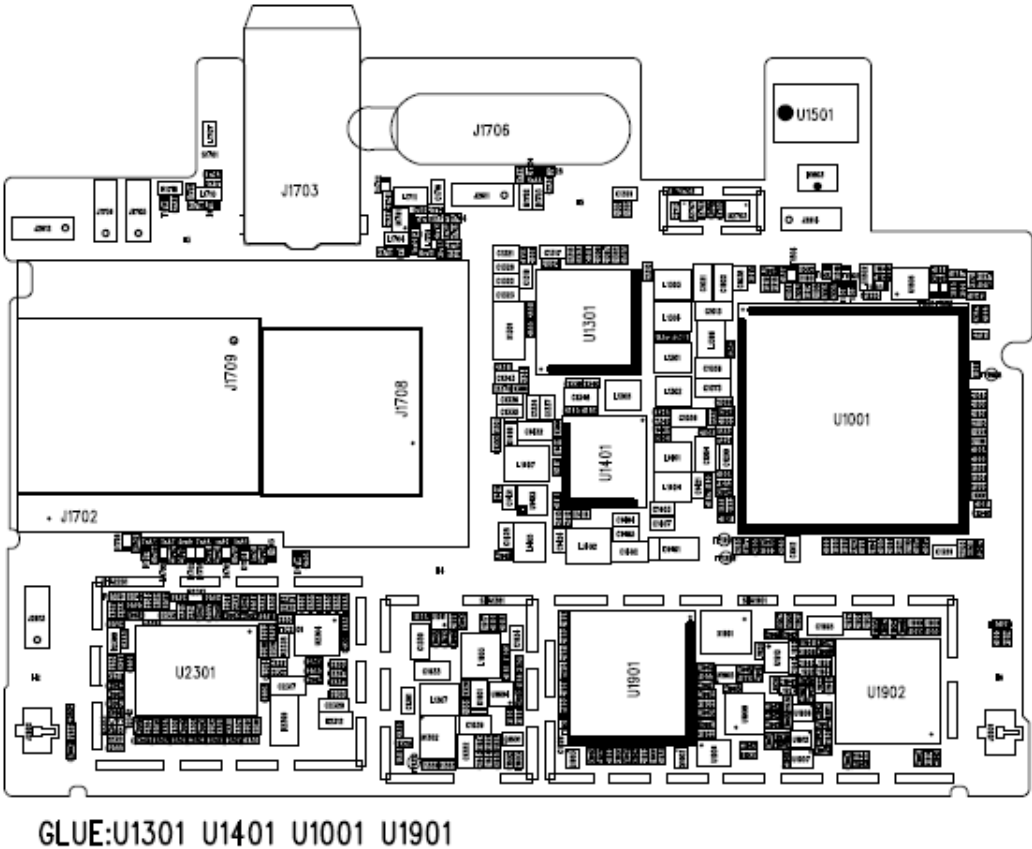
If you want disassemble the battery, need to pull out the battery adhesive. The red arrow location

## 1.2 The phone assemble guide

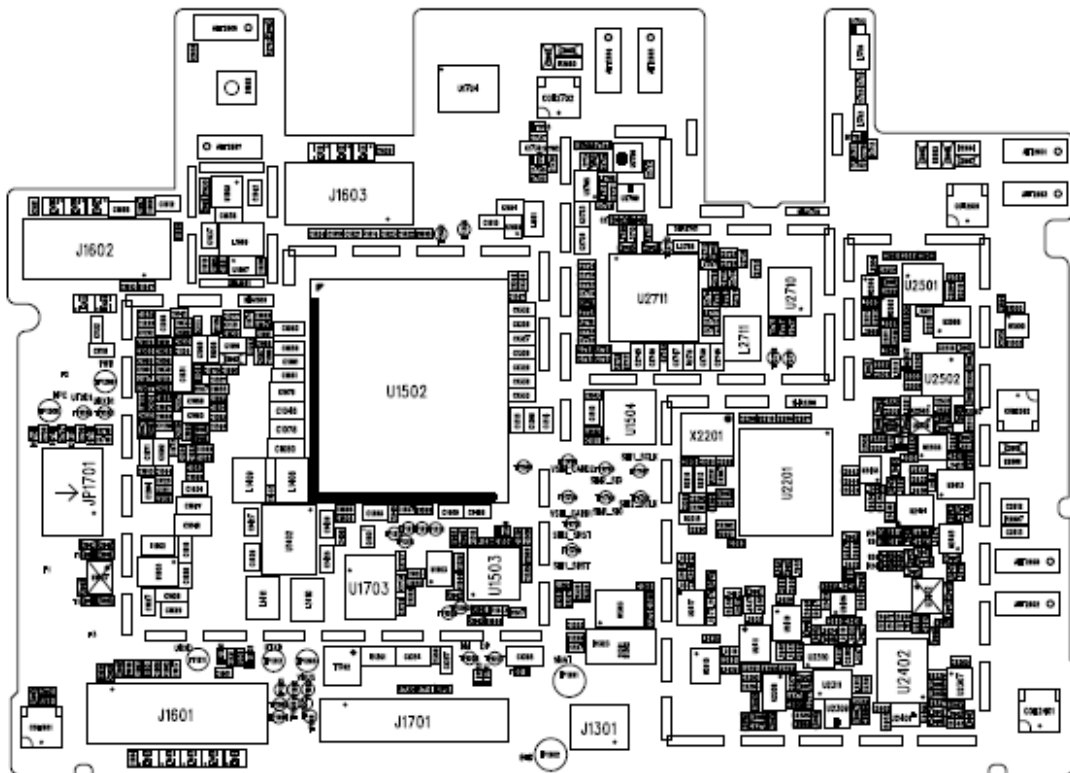
Assemble and disassemble process is opposite

# 2. Main board and Sub FPC layout introduction

## 2.1 Main board top view

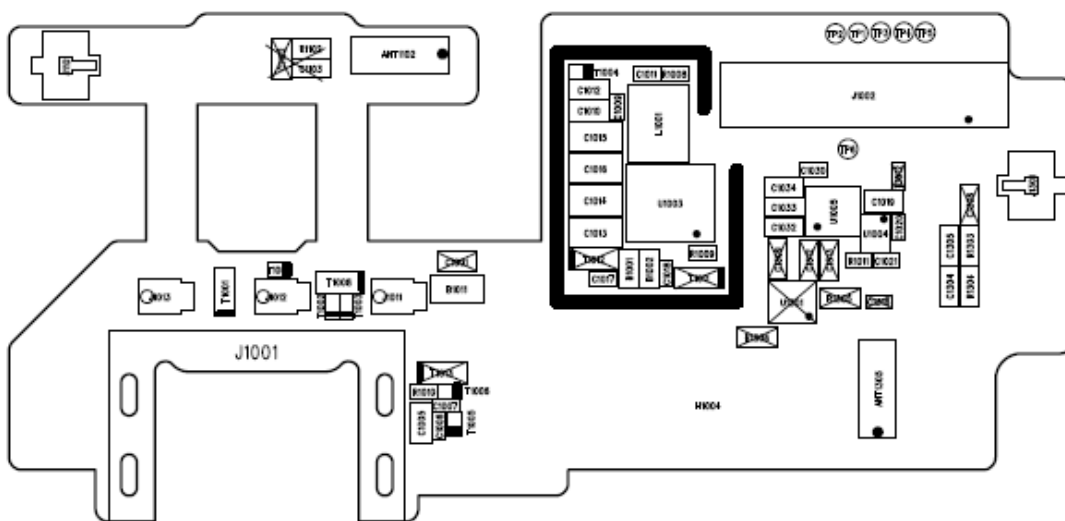


## 2.2 Main board bottom view



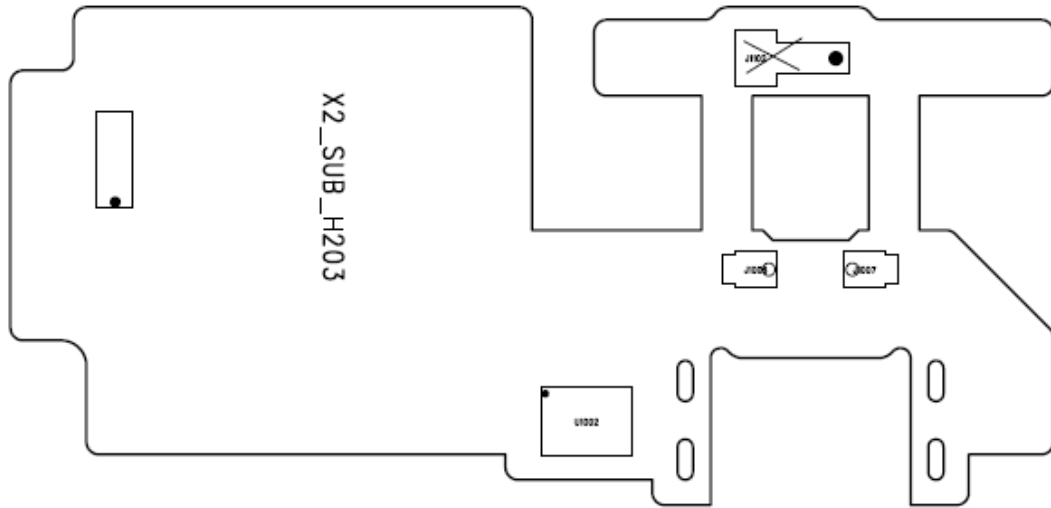
GLUE : U1502

## 2.3 Sub board top view



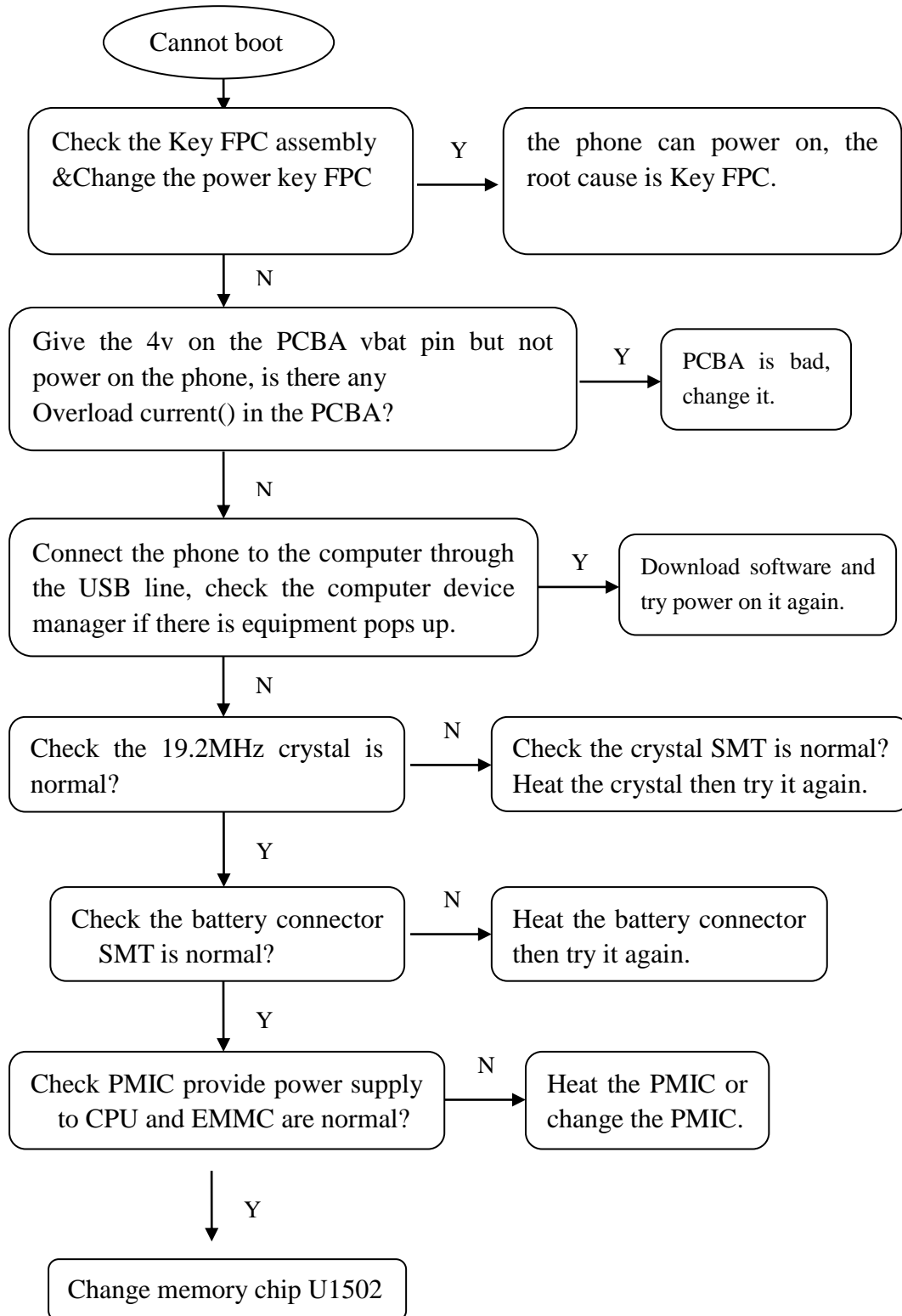


## 2.4 Sub board bottom view

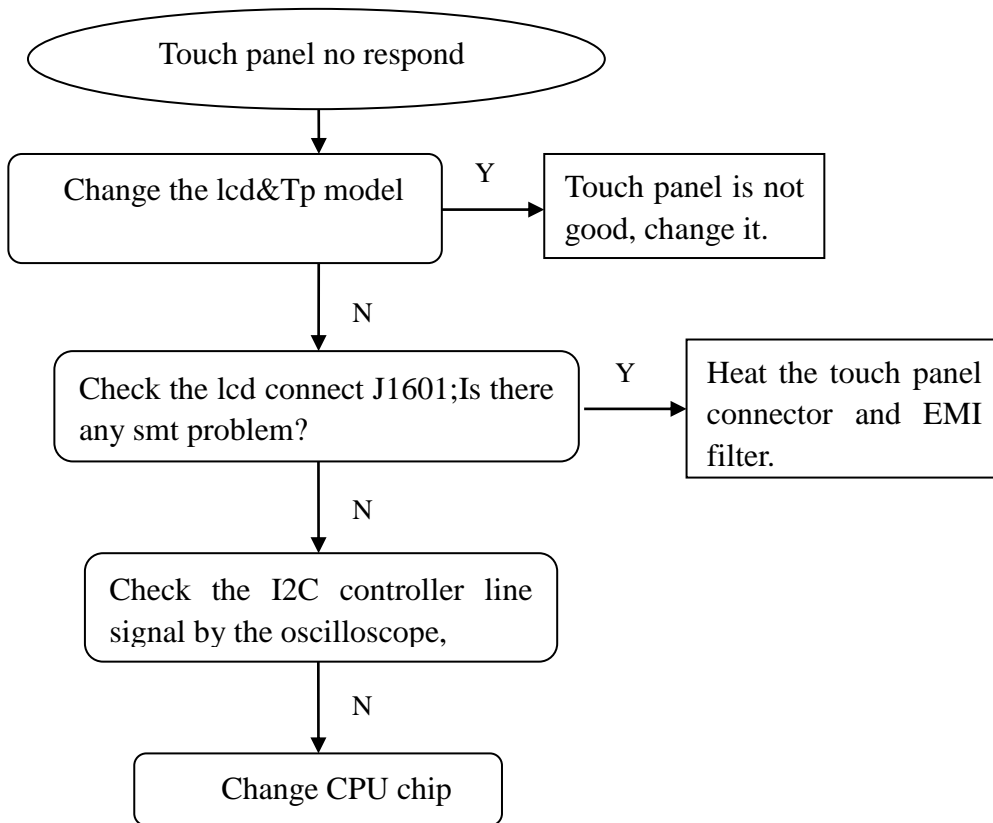


# 3. Troubleshooting Procedure

## 3.1 No boot

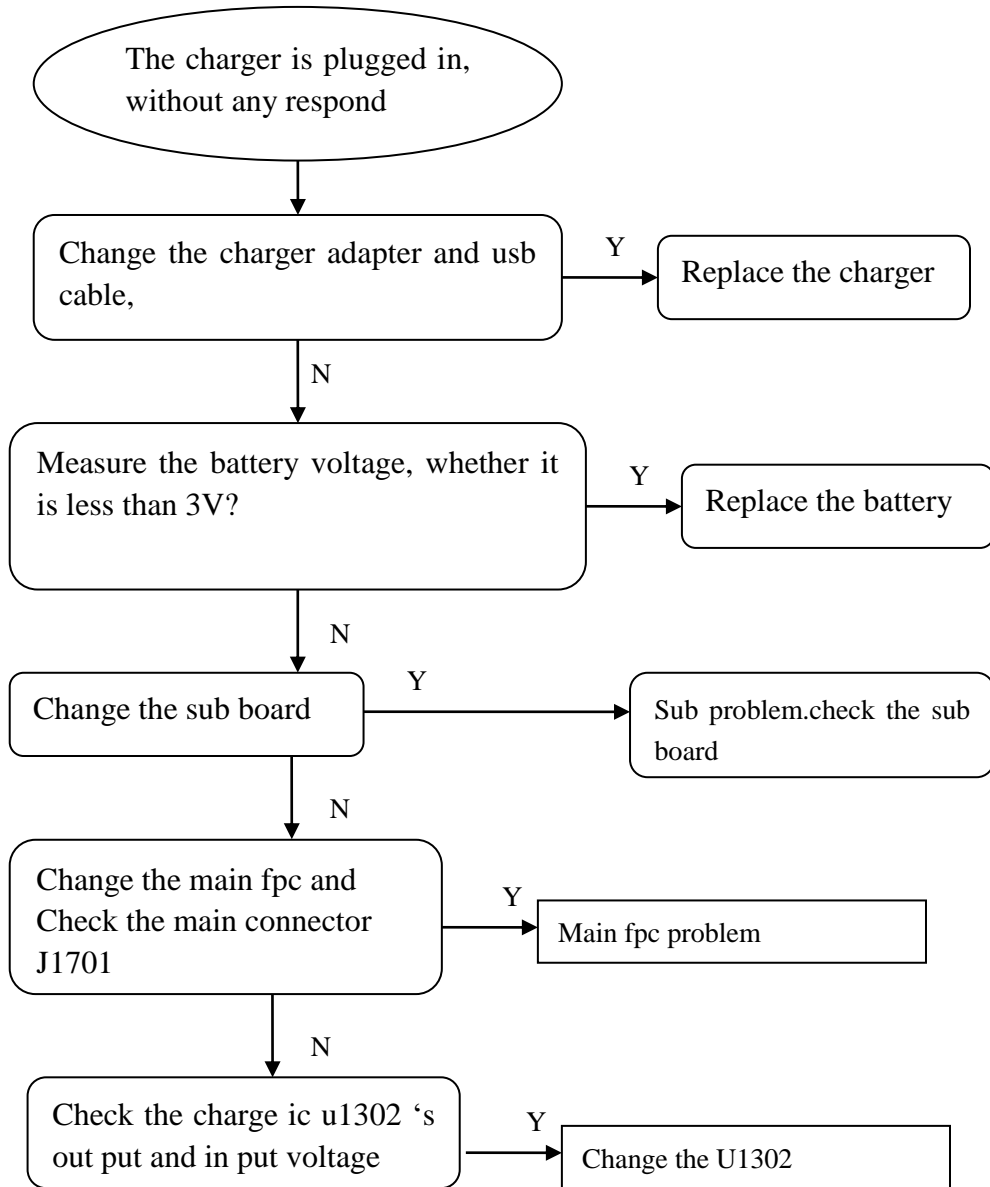


### 3.2 Touch panel have no effect

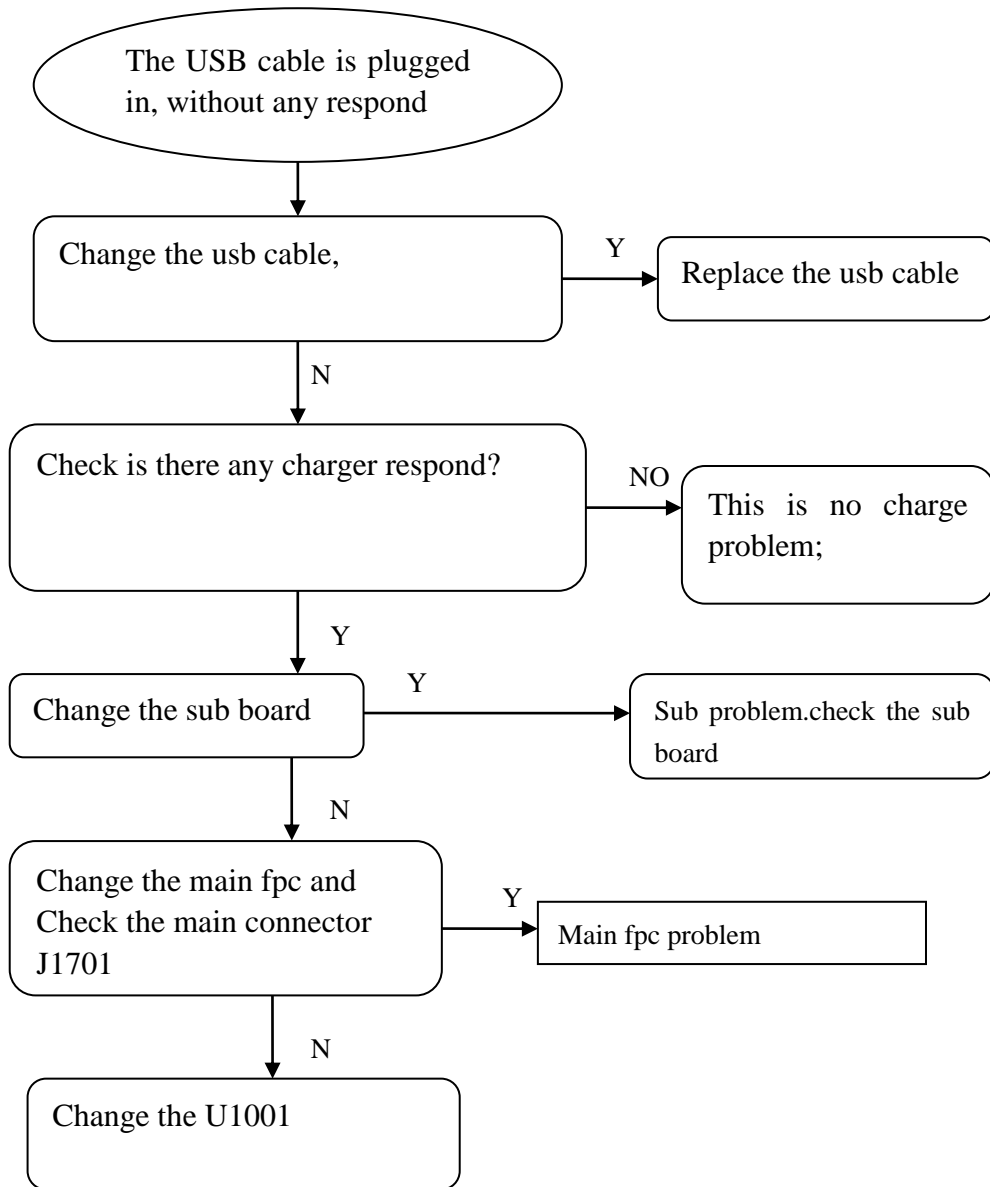


### 3.3 Charging anomaly

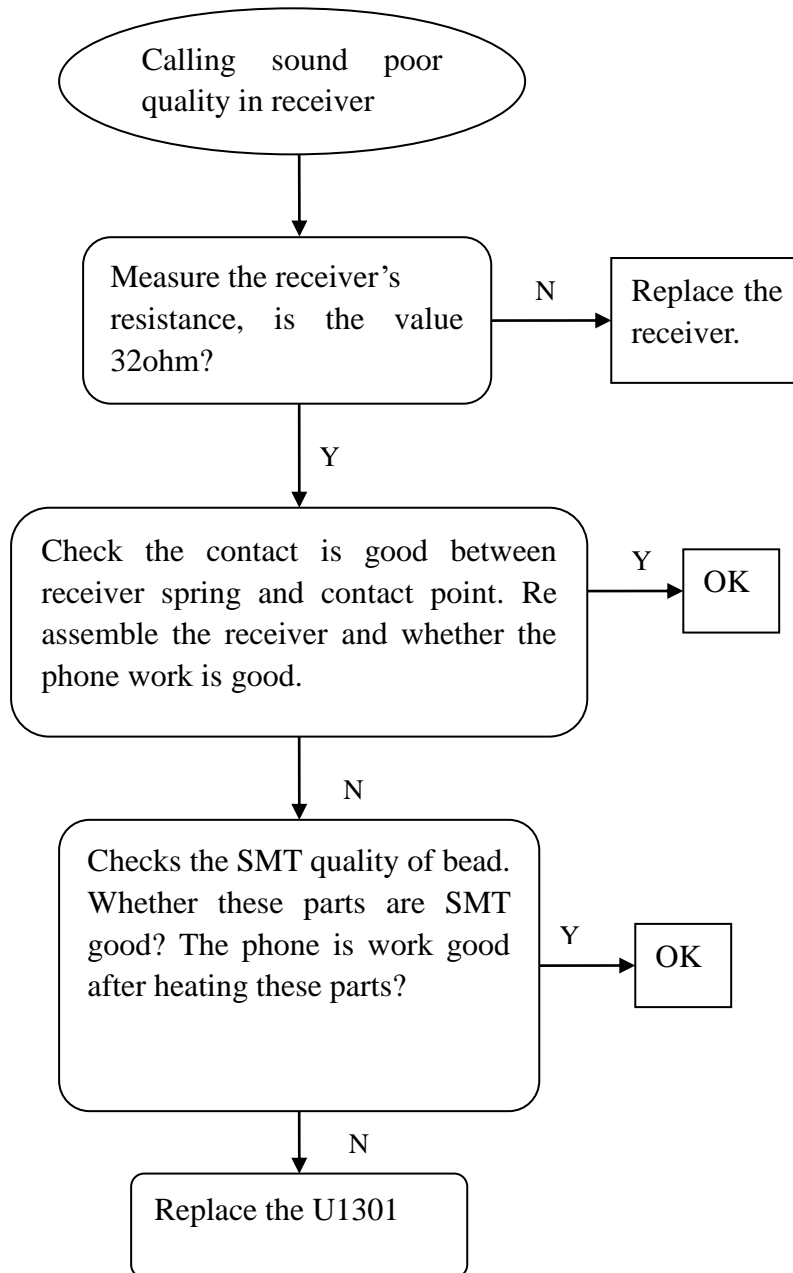
#### 3.3.1 The charger is plugged in, without charging display



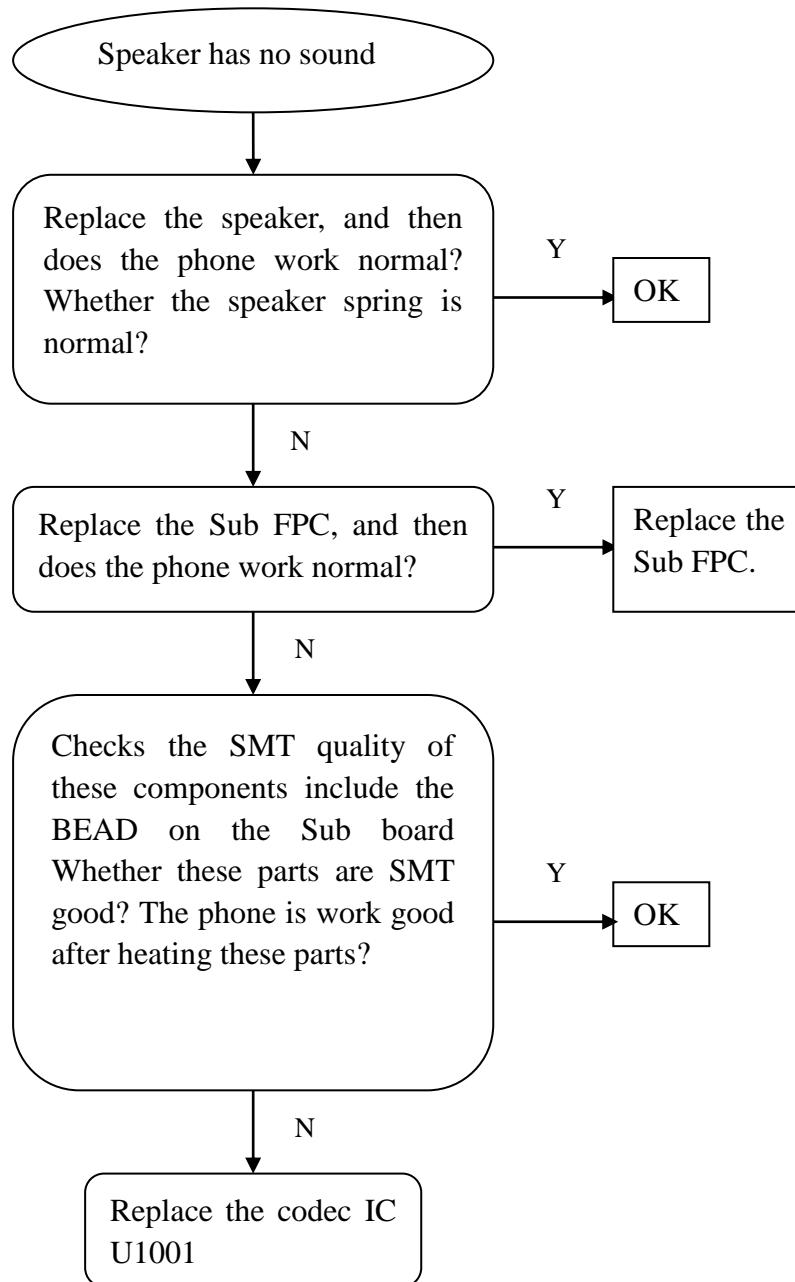
### 3.3.2 Connect the phone and computer through USB line, but not any new device was found in the computer



### 3.4 Calling receiver sound has poor quality

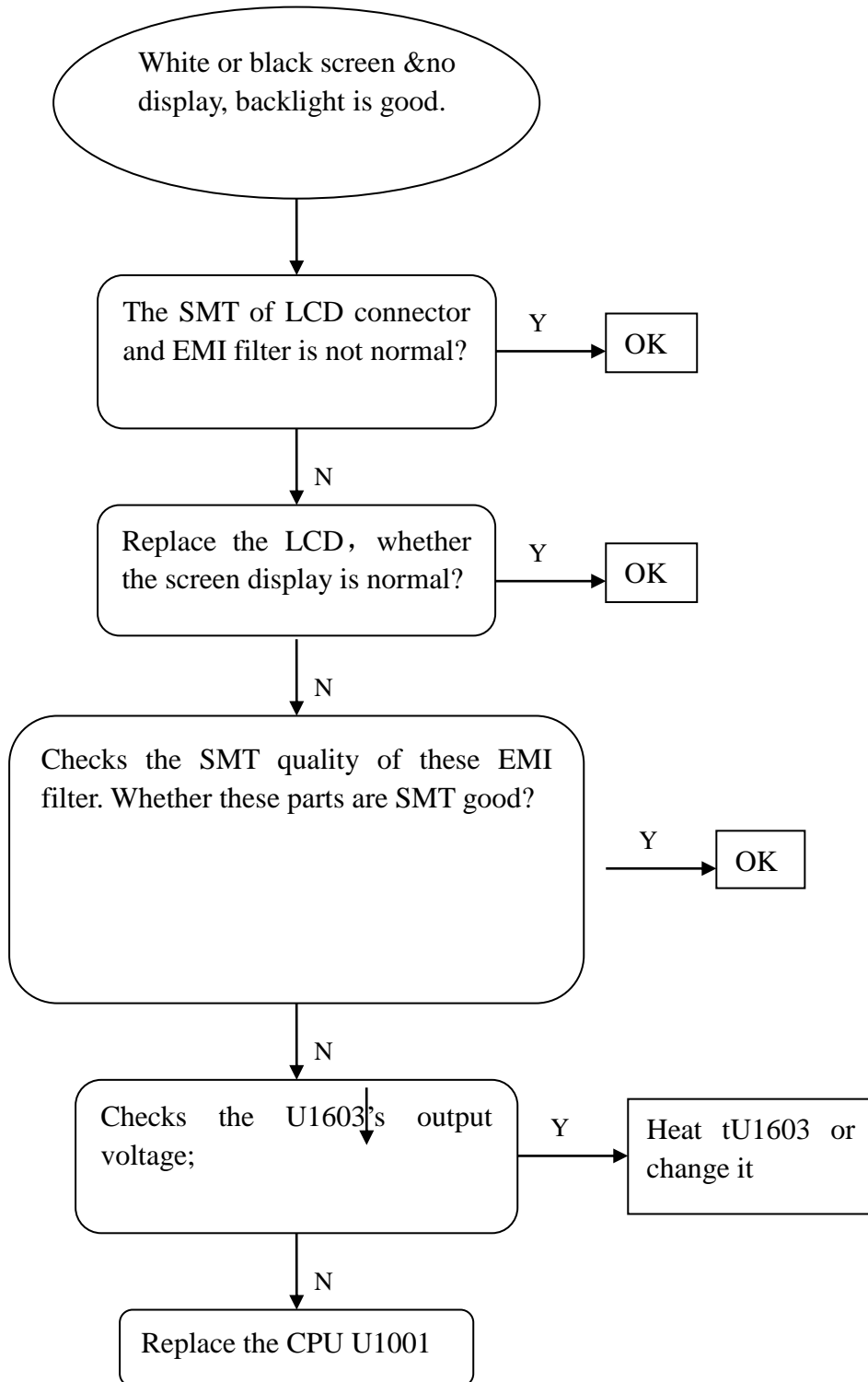


### 3.5 Speaker has no sound



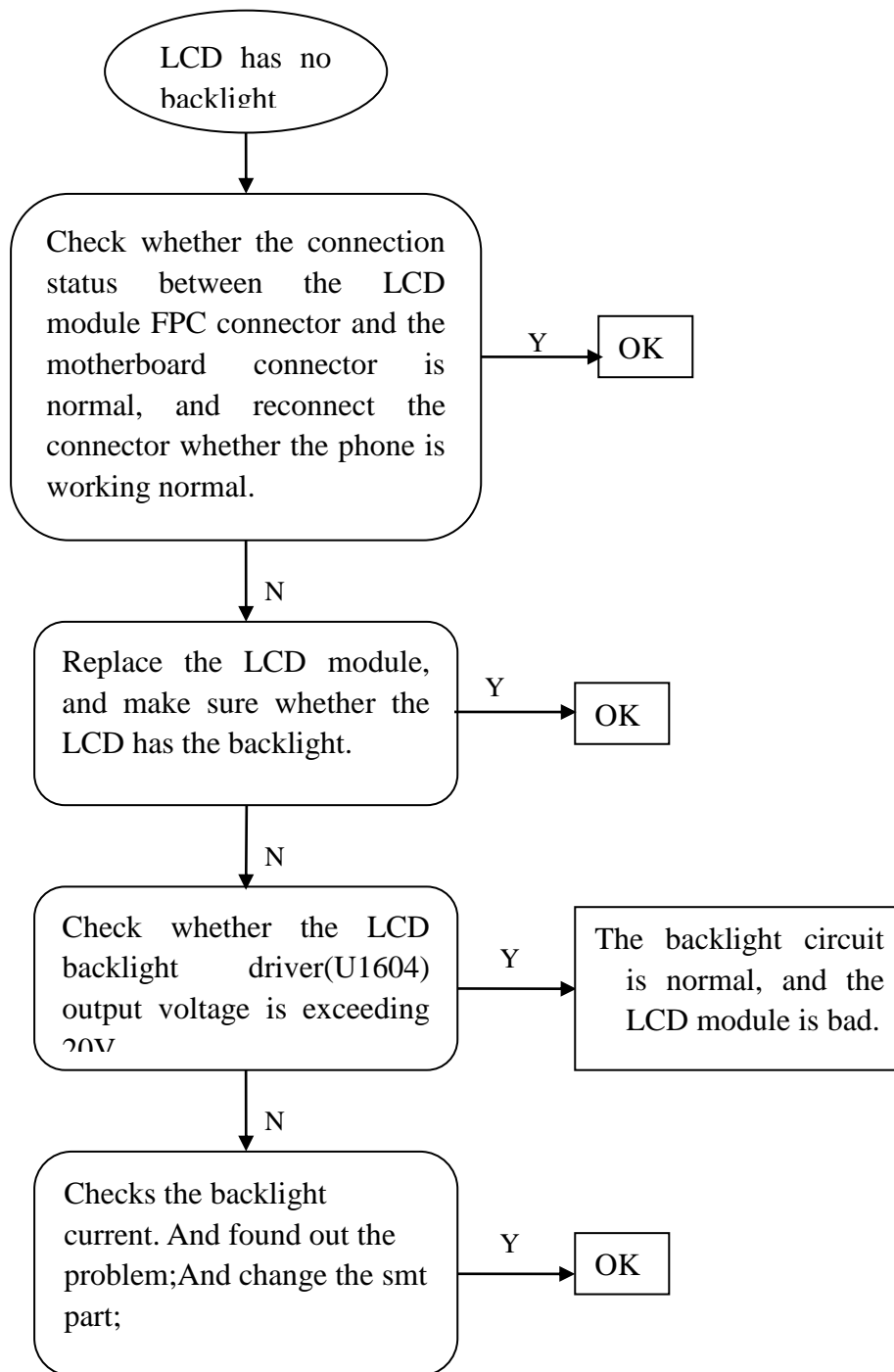
## 3.6 LCD has no display

### 3.6.1 Power on and no display

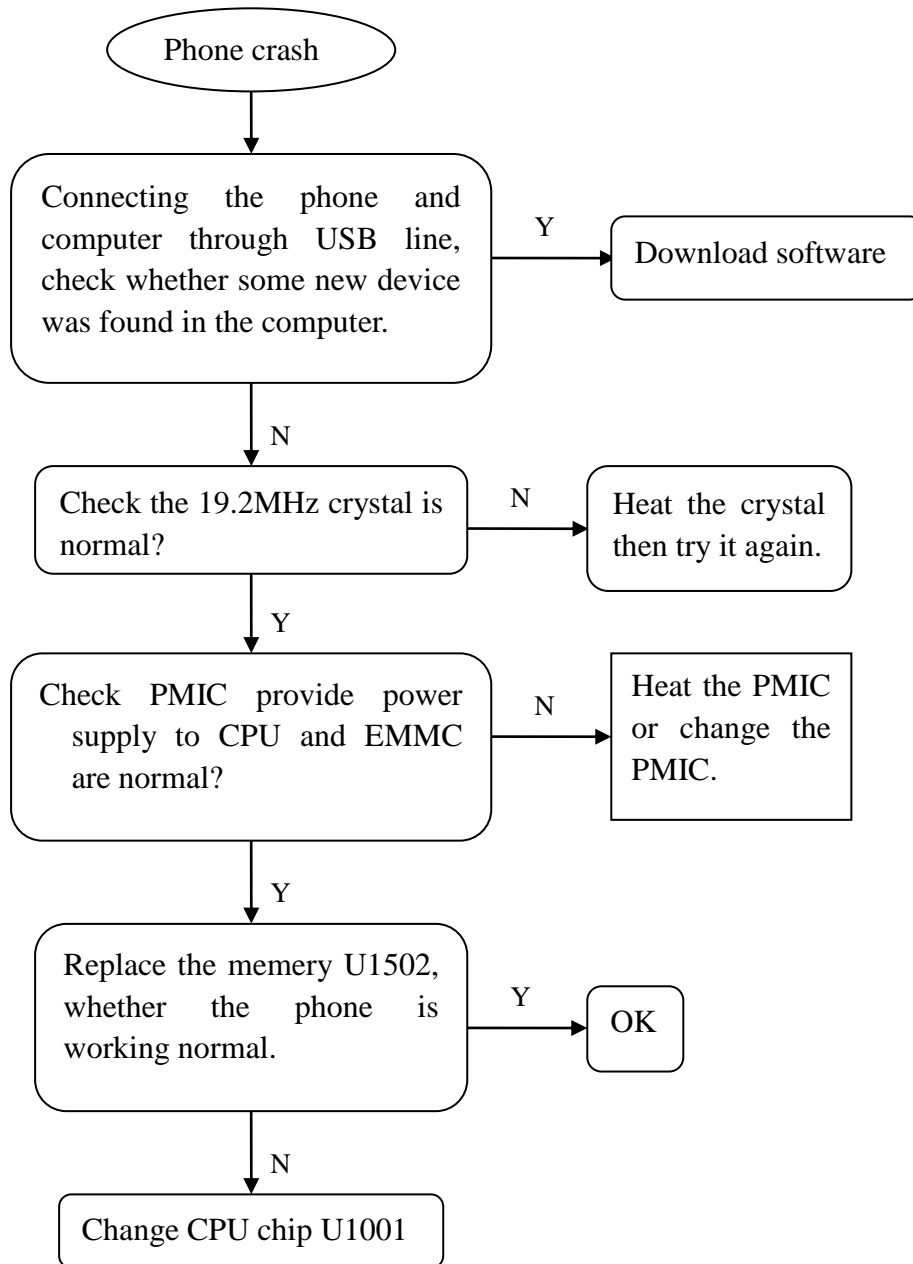




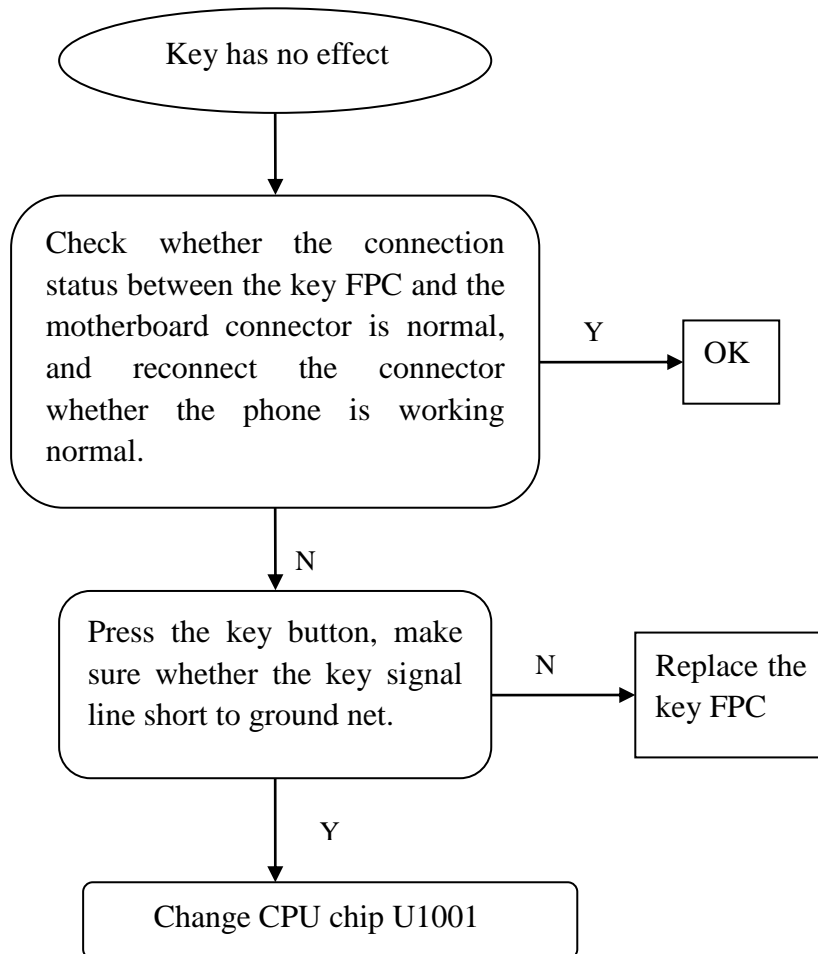
### 3.6.2 LCD has no display



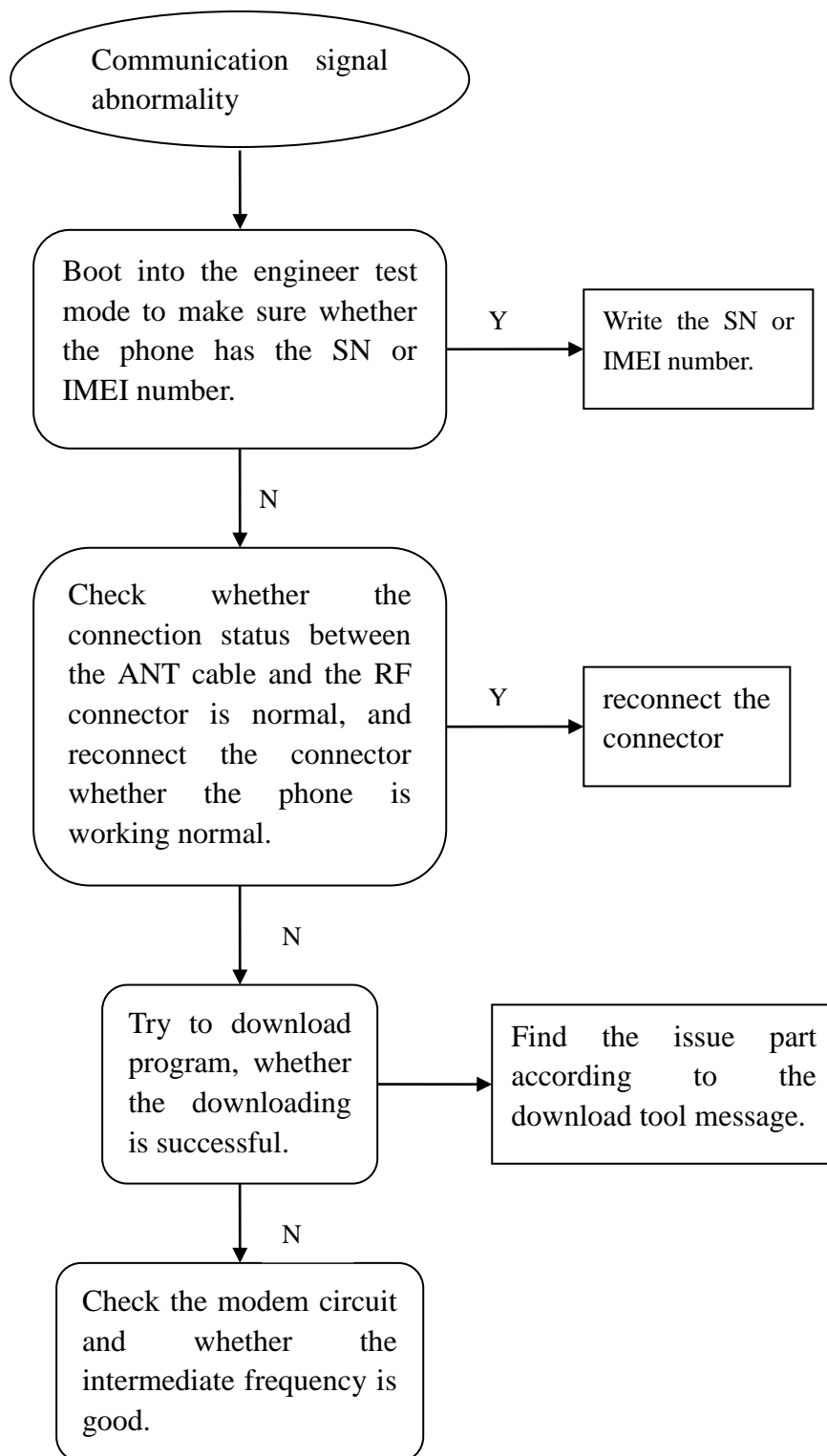
### 3.7 Phone crash



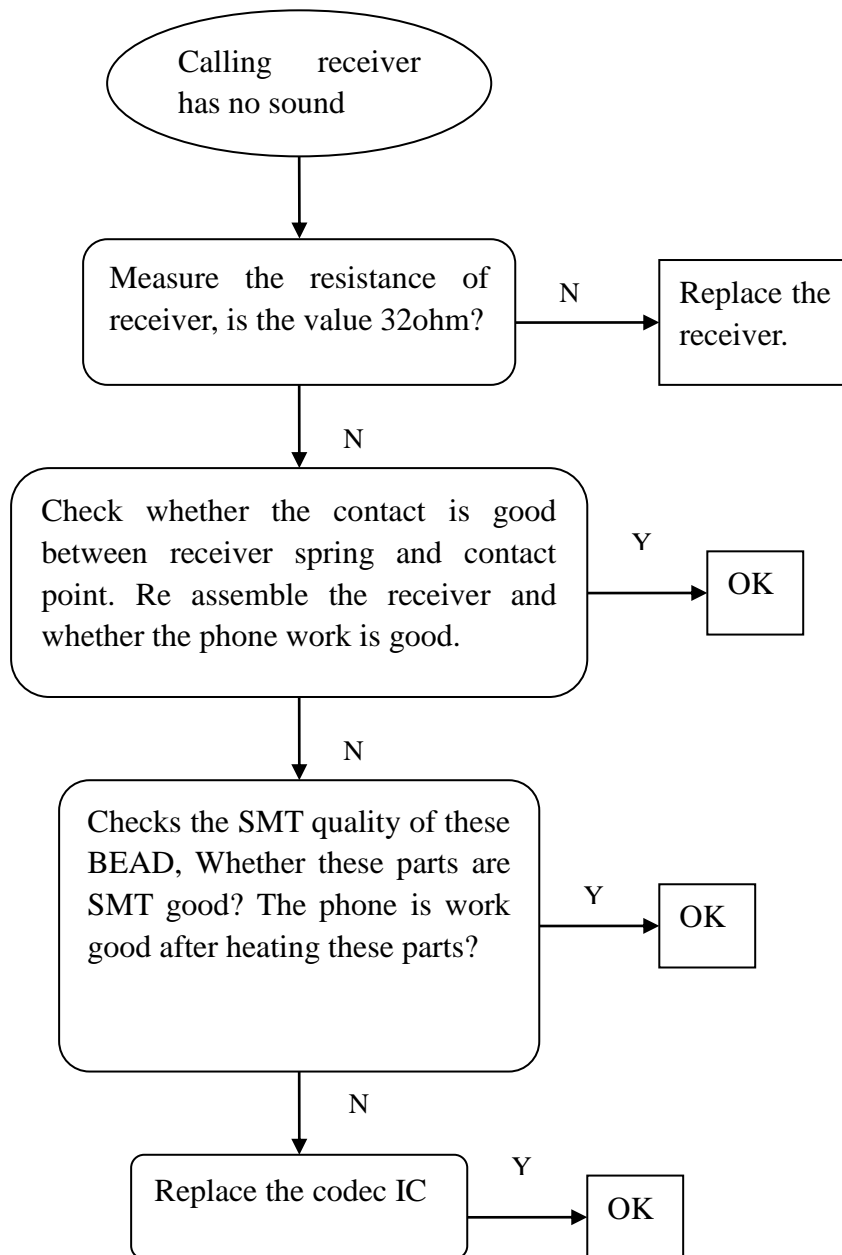
### 3.8 Key has no effect



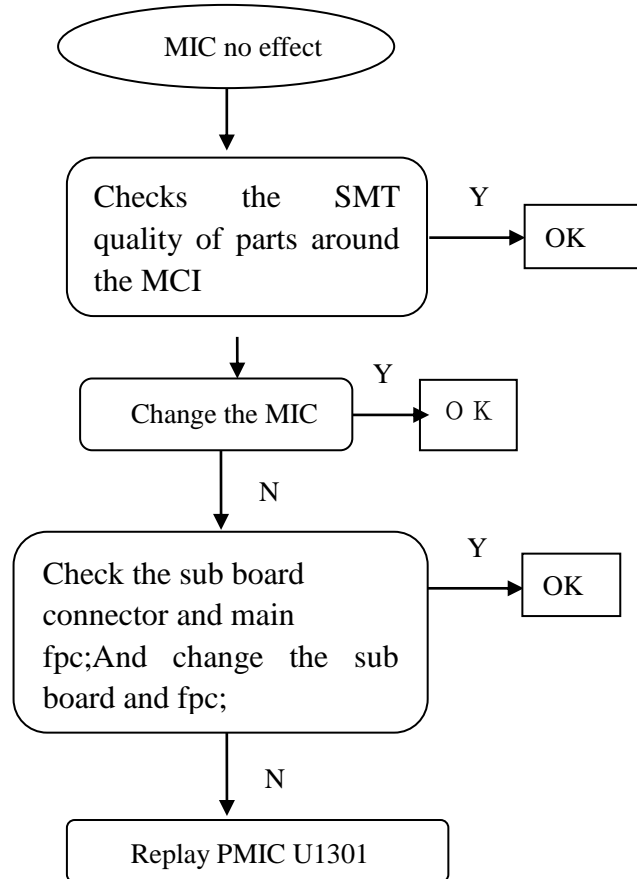
### 3.9 Communication signal abnormality



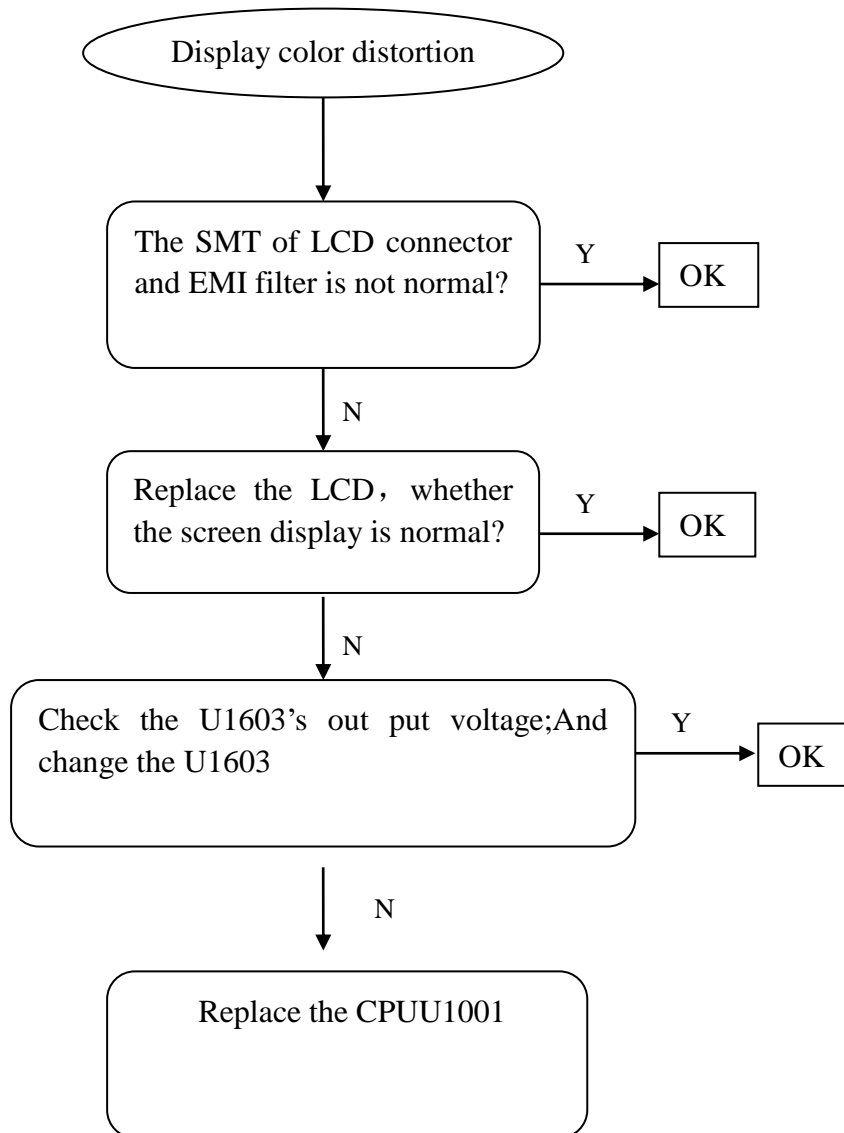
### 3.10 Calling receiver has no sound



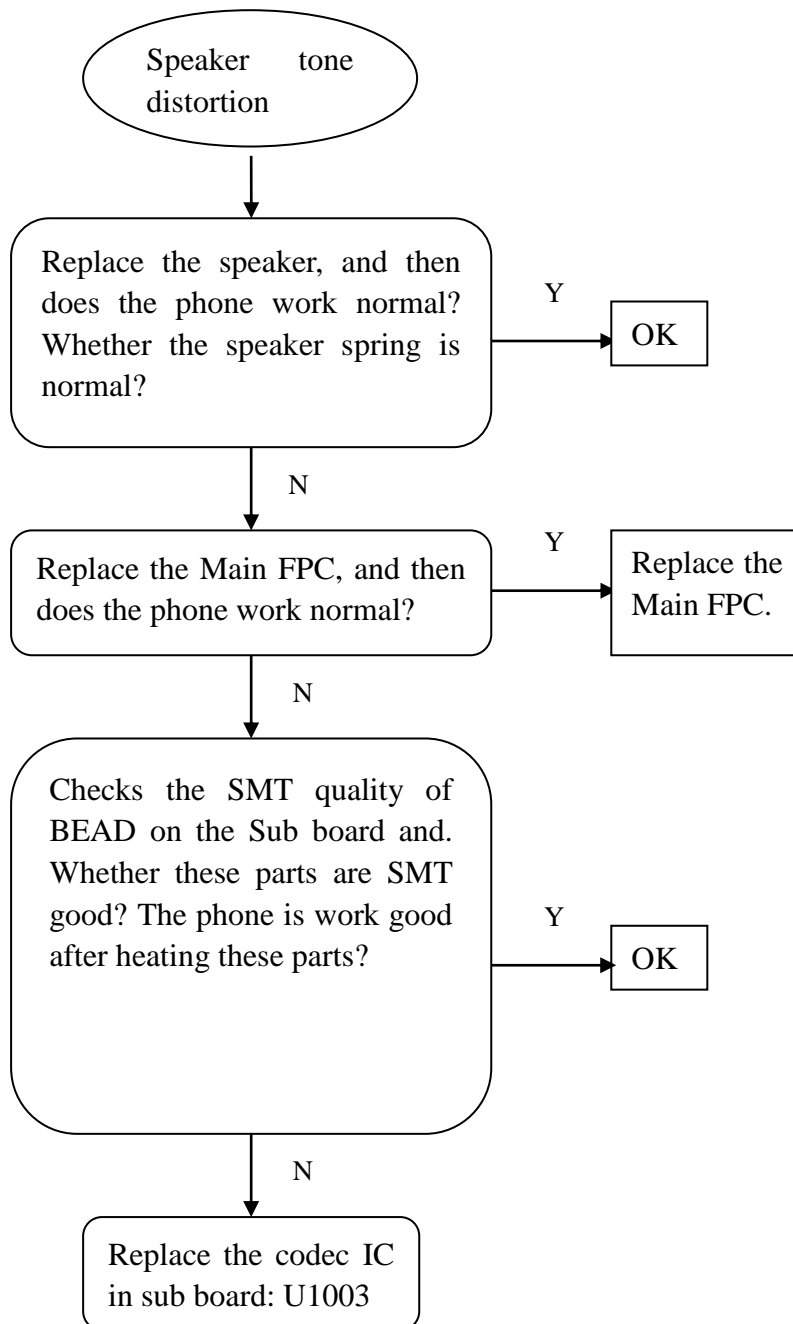
### 3.11 Microphone has no effect



### 3.12 Display color distortion

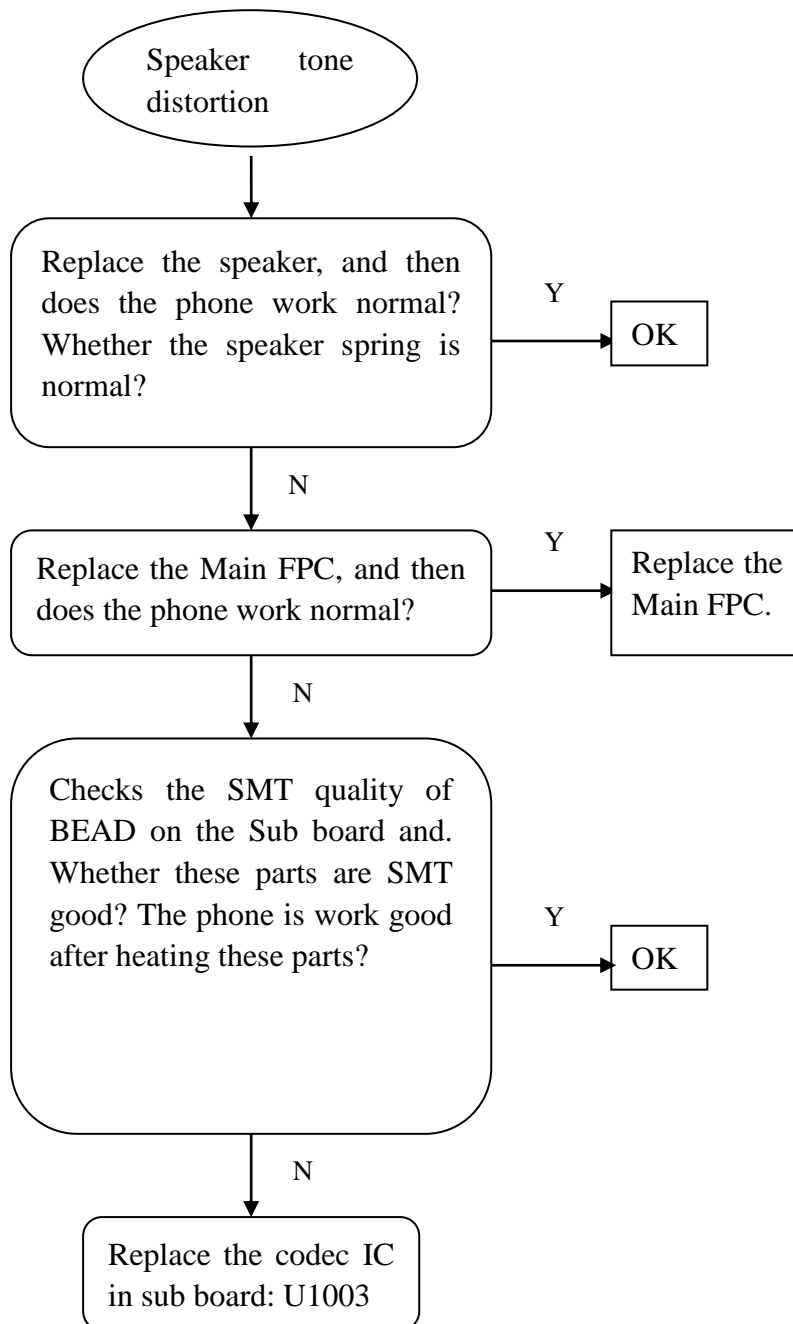


### 3.13 Speaker tone distortion

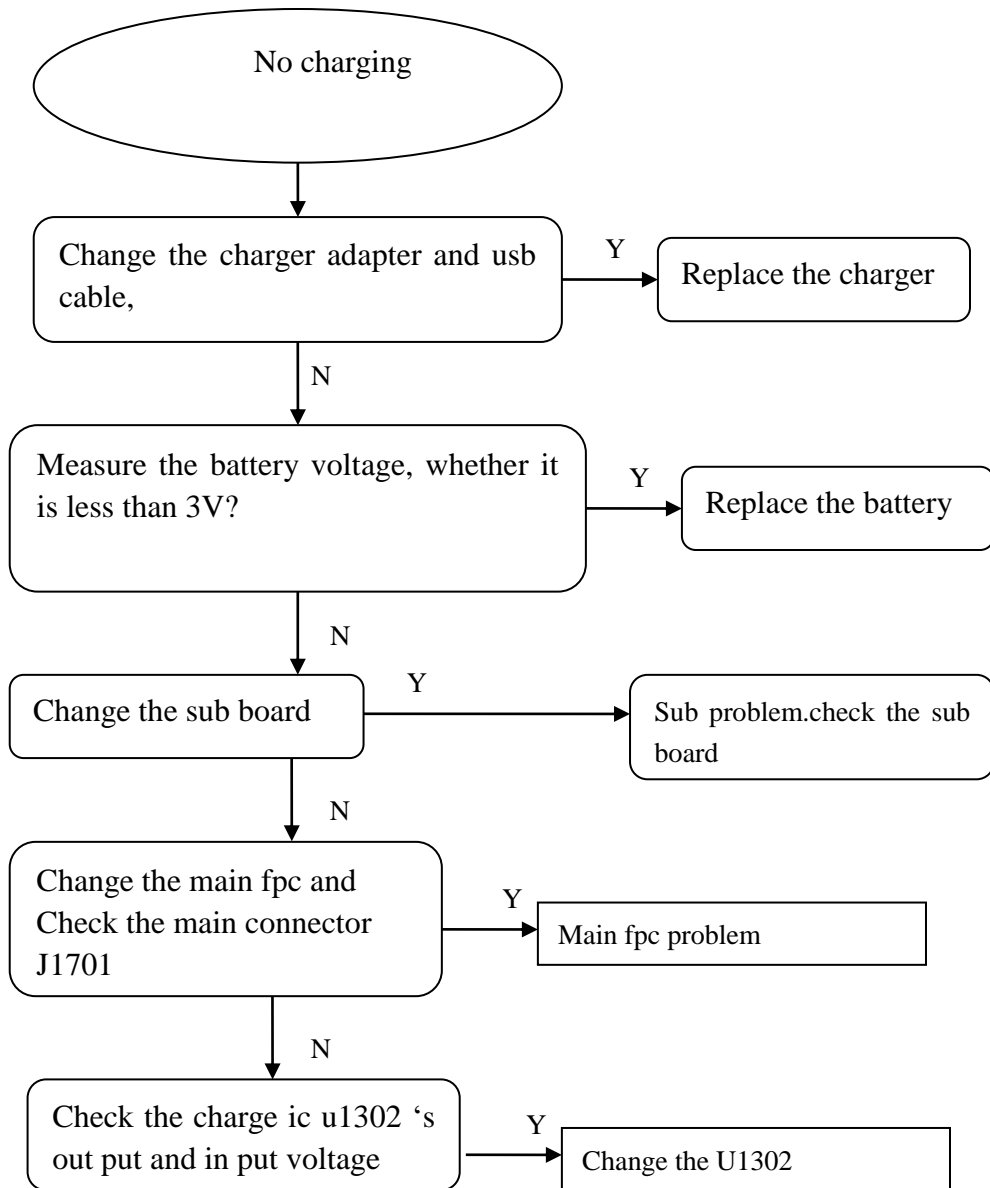




### 3.14 Speaker tone smaller

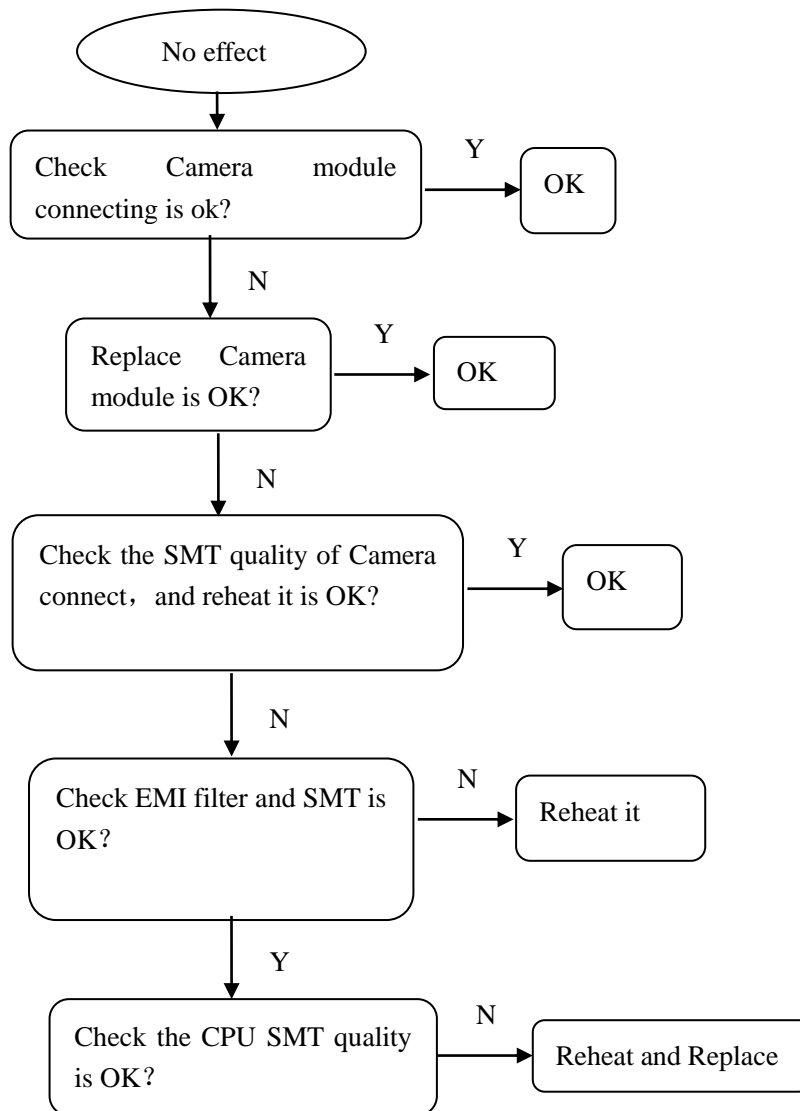


### 3.15 No charging

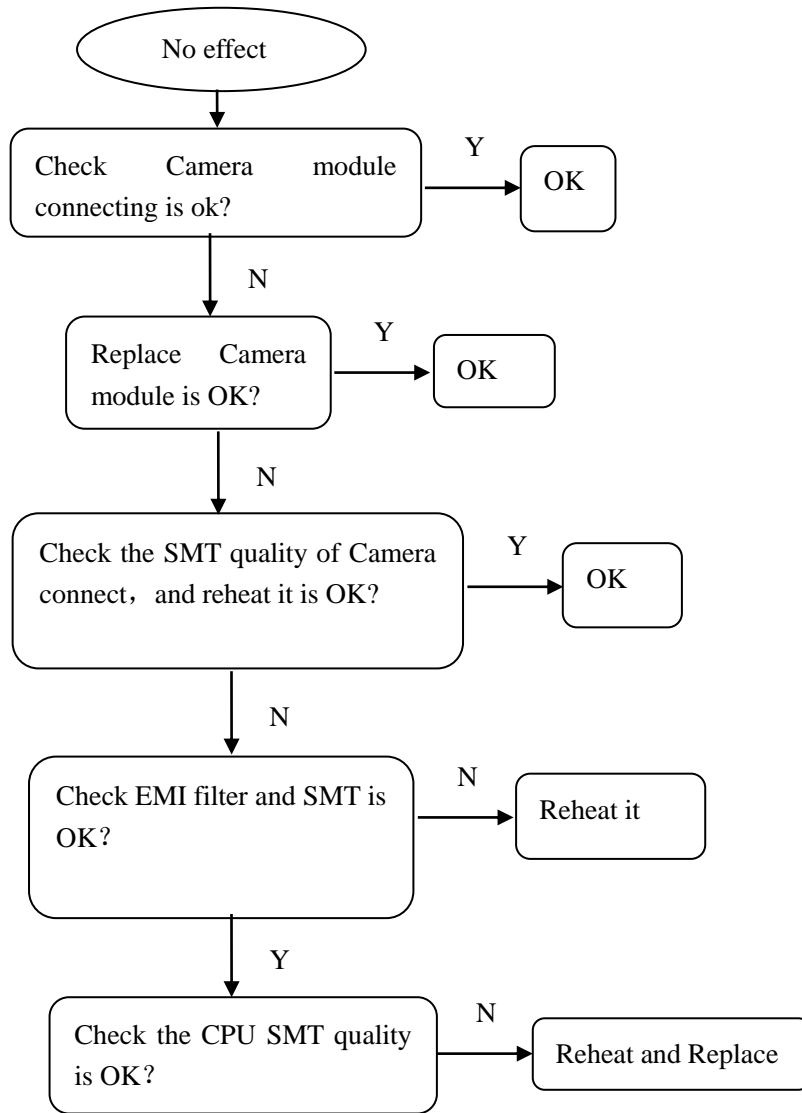


## 3.16 Camera has no effect

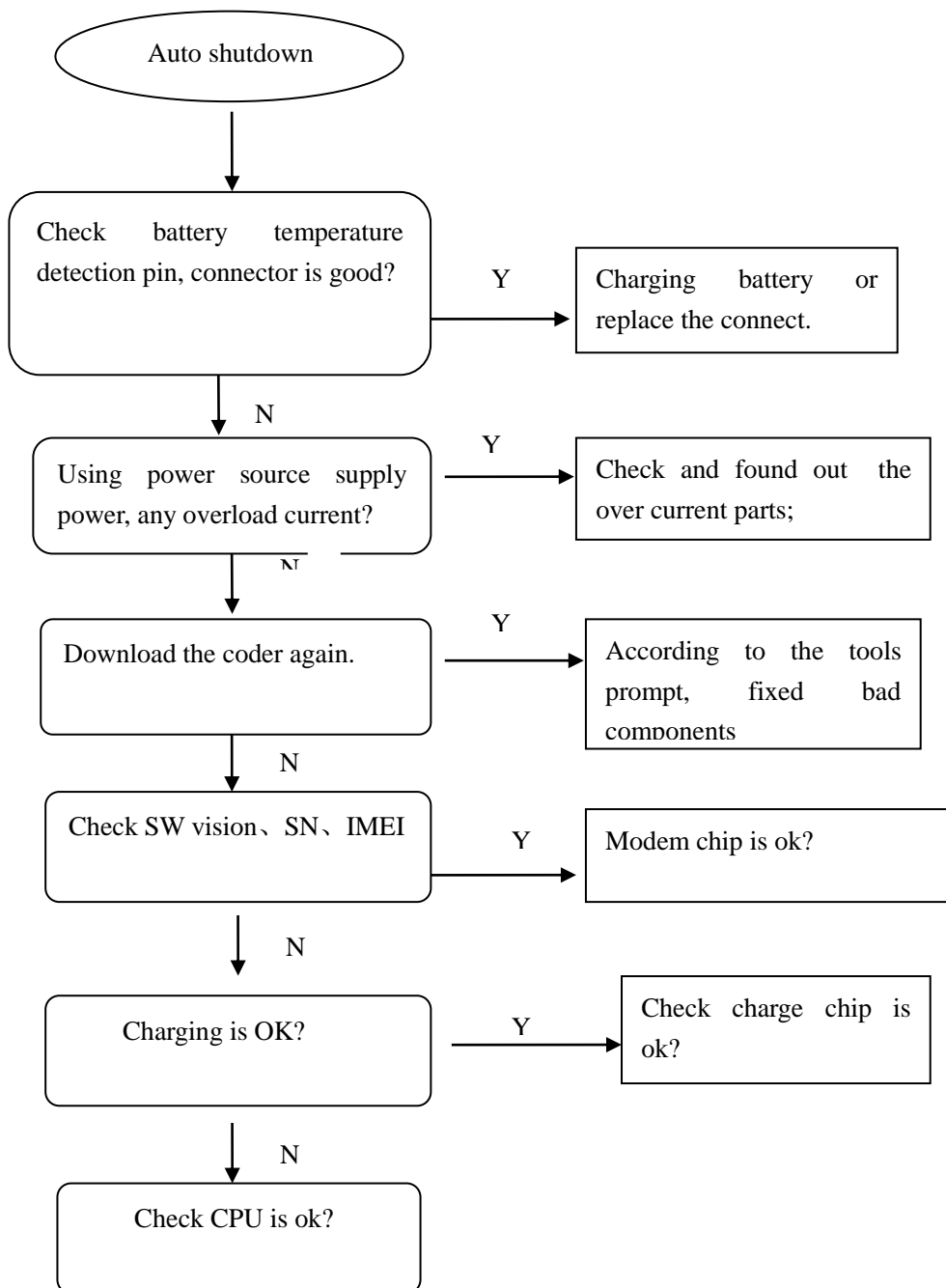
### 3.16.1 Main camera has no effect



### 3.16.2 Sub camera has no effect



### 3.17 Auto shutdown



### 3.18 SIM Card has not be detected

