

Product : GSM

Model : SGH-M300

Date : June 22, 2007

SUBJECT : M300 New LCD module


1. Purpose :

- In order to inform repair engineers of information with the form modification and new part code.

2. Background :

- Due to shortage in supply of existing, other LCD is added as new part.

3. The difference between old and new LCD module

Type	As-Is (AUO)	To be (WINTEK)
Part Code	GH07-01076A	GH07-01172A
Difference	 <p>The difference is new LCD has additional marking string with -W.</p>	

4. Notice

- There is NO CHANGE of Cosmetic.
- The software version newly released is properly working with both kinds of hardware of M300.
EX) M300Bxxxx
- The hardware is compatible with both LCDs but hardware version has to be changed to matched with each LCD module.

Type	Matched with AUO	Matched with WINTEK
H/W(PBA) version	MP0.600	MP W 0.600

※ When exchanging LCD module or PBA, firstly check if H/W version is matched with LCD module.

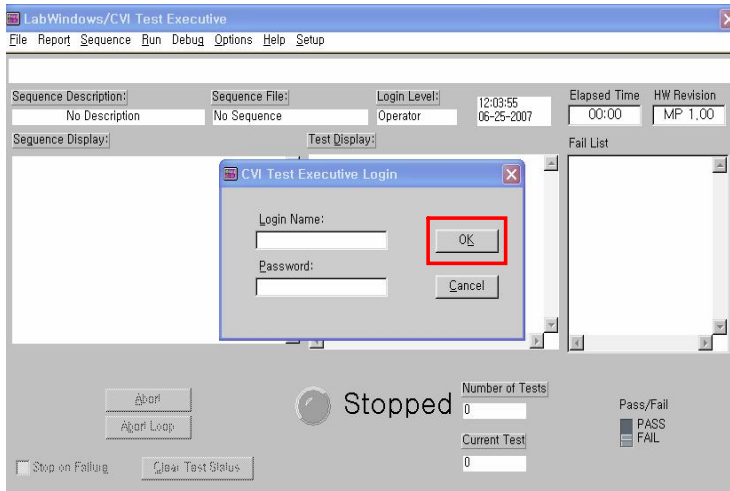
5. The way to change H/W version

※ Use the test cable for M300 (Part code : GH39-00501A)

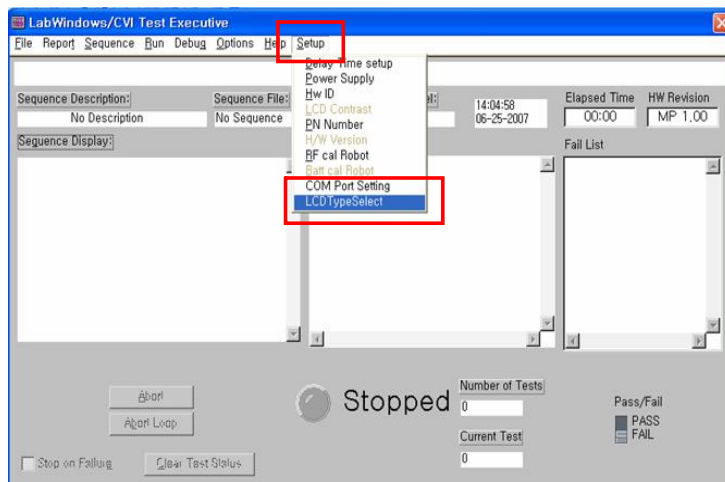
Attached is setup file for
AGERE_LCDTYPE_CHANGE_REVERSION_WRITER VER1.0

Execute PGM (AGERE_LCDTYPE_CHANGE_REVERSION_WRITER VER1.0).

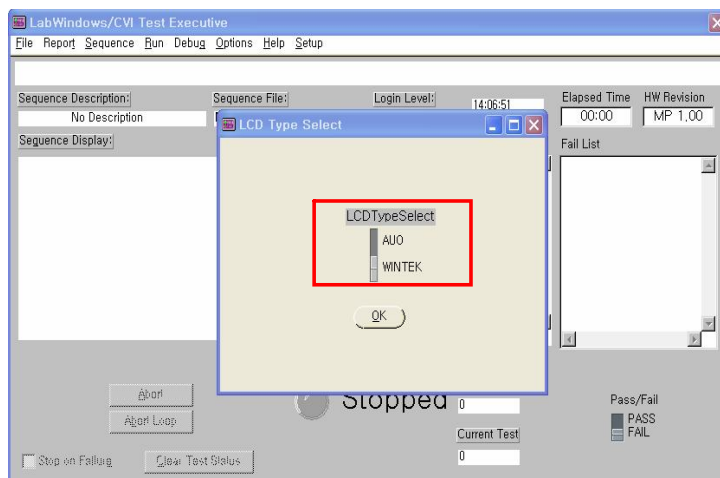
Do not input any string, just press 'OK' button.



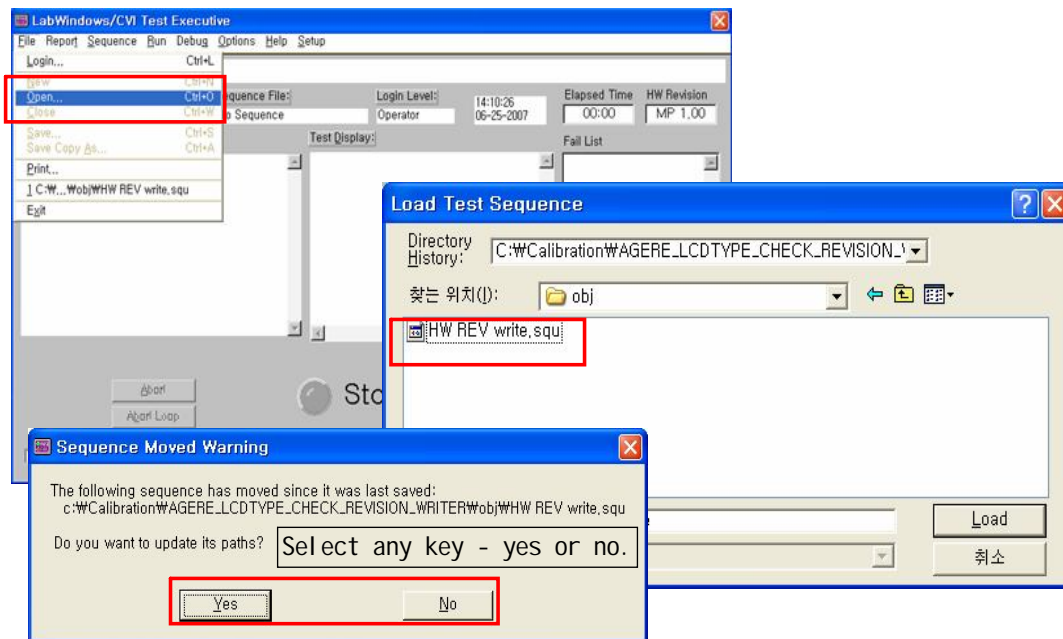
Setup> LCD TypeSelect



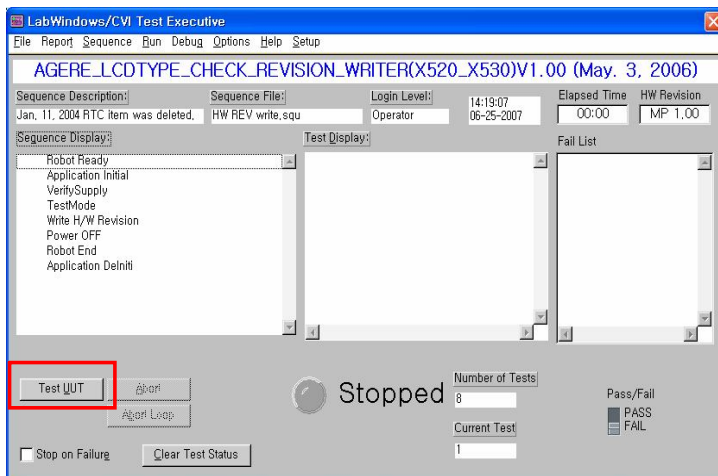
Select proper LCD module.



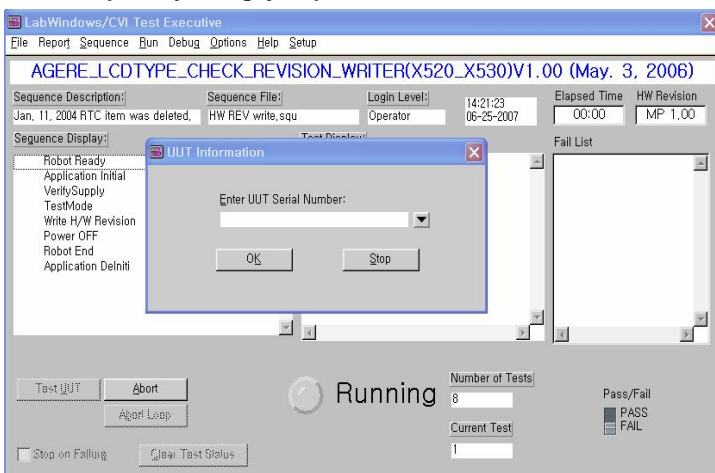
File > Open > obj(Folder) > HW REV write.squ



Click 'Test UUT' button



Do not input any string, just press 'OK' button.



※ When **wrong Hardware version** upgraded,

(1) AUO + MPW0.600 (HW version)

→ The brightness of display is **more light** than normal status.

(2) WINTEK + MP0.600 (HW version)

→ The brightness of display is **darker** than normal status
and display of preview mode would be darkness .