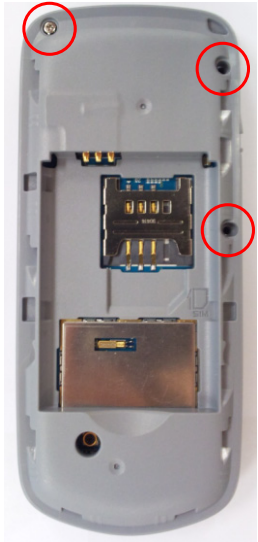


11. Disassembly and Assembly Instructions

11-1. Disassembly

1

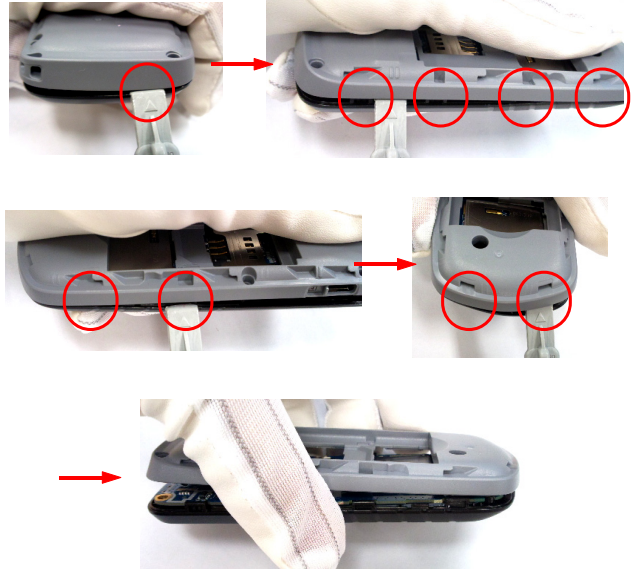
Unscrew 3 points at the REAR case



1) Be careful not to make scratch and molding damage!

2

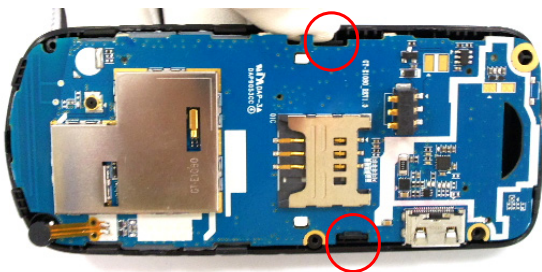
Disassemble the REAR as below sequence



1) Be careful not to make scratch and molding damage!
2) Be careful not to damage IF COVER

3

Disassemble the PBA. Be careful with hooks.



1) Be careful not to make scratch and molding damage!

4

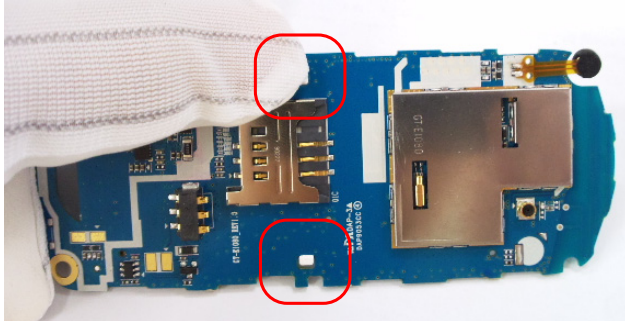
Separate the PBA from the FRONT



1) Be careful not to make scratch and molding damage!

5

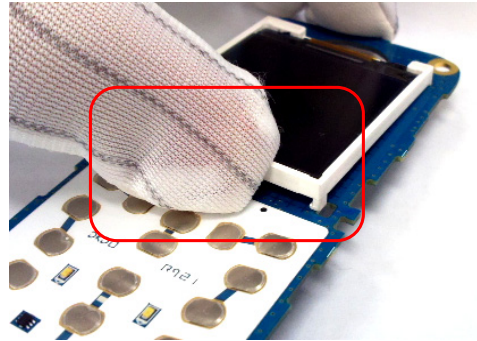
Push the hooks of both side of LCD



- 1) Be careful not to make scratch and molding damage!
- 2) Be careful not to damage LCD

6

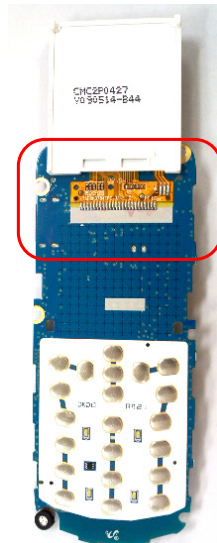
Lift up bottom side of the LCD carefully.



- 1) Be careful not to make scratch and molding damage!
- 2) Be careful not to damage LCD FPCB and LCD

7

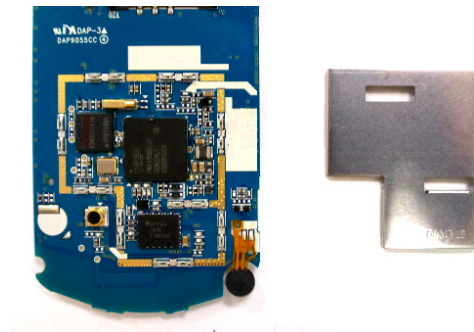
Disassemble the LCD.



- 1) Be careful not to make scratch and molding damage!
- 2) Be careful not to damage LCD FPCB and LCD

8

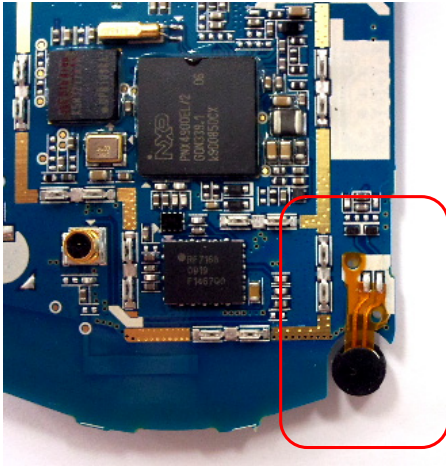
Disassemble the SHIELD CAN



- 1) Be careful not to make scratch and molding damage!

9

Disassemble the MIC



- 1) Be careful not to make scratch and molding damage!
- 2) Be careful not to damage MIC FPCB

10

Separate the KEYPAD from the FRONT

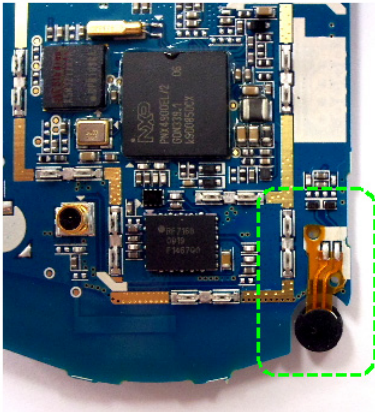


- 1) Be careful not to make scratch and molding damage!

11-2. Assembly

1

Soldering 2 points of MIC FPCB pad with PBA

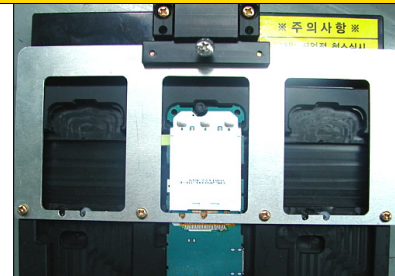


2

Soldering FPCB of the LCD MODULE

CAUTION

Check F-PCB to MAIN PCB soldering tightly.
(If there is a gap between F-PCB and Main board will makes faulty)



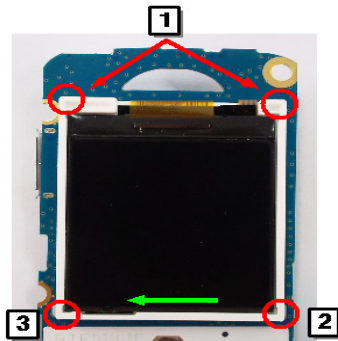
Be careful not to make Flux on the Main Board
(Use the cover of Soldering Jig)

1) Be careful not to make scratch and molding damage!

1) Be careful not to make scratch and molding damage!
2) Be careful not to make a gap between LCD FPCB and Main Board.
3) Height of solder should not over 0.2mm.

3

Combine LCD to Main Board.



Push LCD to left and make left hook takes it's position.

CHECK POINT

1. Order of LCD combining
 - ① Set LCD rib to it's hole
 - ② Push and lock the hook which is at right-bottom side of LCD
 - ③ Push and lock the hook which is at left-bottom side of LCD

1) Be careful not to make scratch and molding damage!
2) Don't push the panel of LCD while combine the LCD

4

Assemble the SHIELD CAN



1) Be careful not to make scratch and molding damage!

5

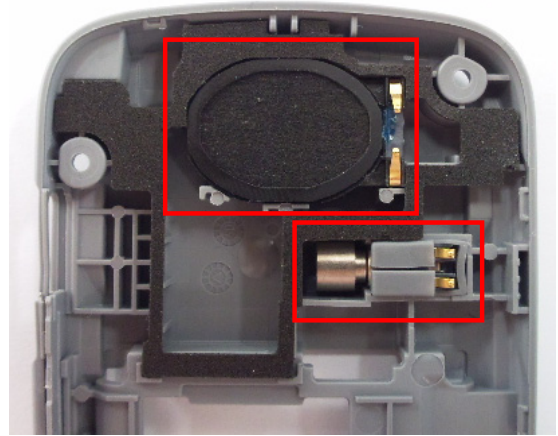
INSERT KEYPAD to FRONT.



1) Be careful not to make scratch and molding damage!

6

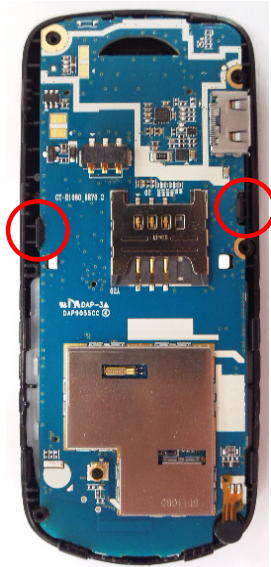
INSERT SPEAKER, MOTOR to REAR.



1) Be careful not to make scratch and molding damage!
 2) When insert MOTOR, use PUSHING JIG.
 3) CHECK SPEAKER, MOTOR insert tightly.

7

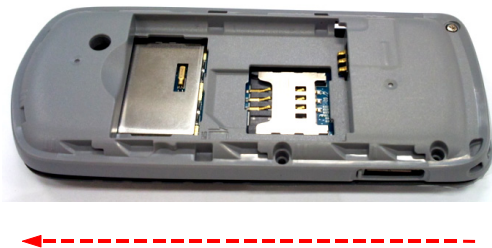
INSERT PBA TO FRONT.



1) Be careful not to make scratch and molding damage!
 2) Be careful nothing goes between LCD and FRONT.

8

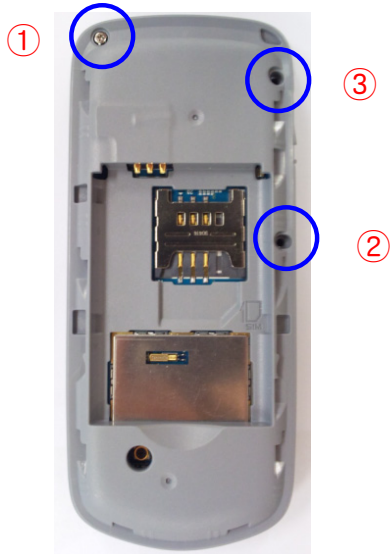
COMBINE REAR FROM TOP TO BOTTOM.



1) Be careful not to make scratch and molding damage!
 2) Be careful not to damage IF COVER.

9

Screw 3 points at the REAR case.



1) Be careful not to make scratch and molding damage!